



INDOFINE Chemical Company, Inc.

121 Stryker Lane, Bldg. 30, Suite 1 • Hillsborough, NJ 08844 • U.S.A.

Phone: (908) 359-6778 • FAX: (908) 359-1179

website: www.indofinechemical.com

e-mail: chemical@indofinechemical.com

CERTIFICATE OF ANALYSIS

Catalog Number: P-003

Product Name: **PIPERINE**
(1-Piperoylpiperidine)

CAS Number: [94-62-2]

Lot No.: 1608879

Molecular Formula: C₁₇H₁₉NO₃

Molecular Weight: 285.34

Appearance: Off-white powder

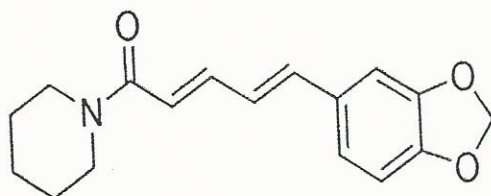
Loss on Drying: 0.28%

Solubility: Soluble in chloroform

NMR Spectrum: Enclosed (conforms to the structure)

Storage: Store in cool, dry place.
Keep away from strong light and heat.

Purity(HPLC): 98.49%





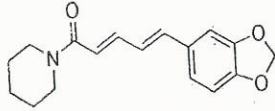
INDOFINE Chemical Company, Inc.

121 Stryker Lane, Bldg. 30, Suite 1 • Hillsborough, NJ 08844 • U.S.A.

Phone: (908) 359-6778 • FAX: (908) 359-1179

website: www.indofinechemical.com

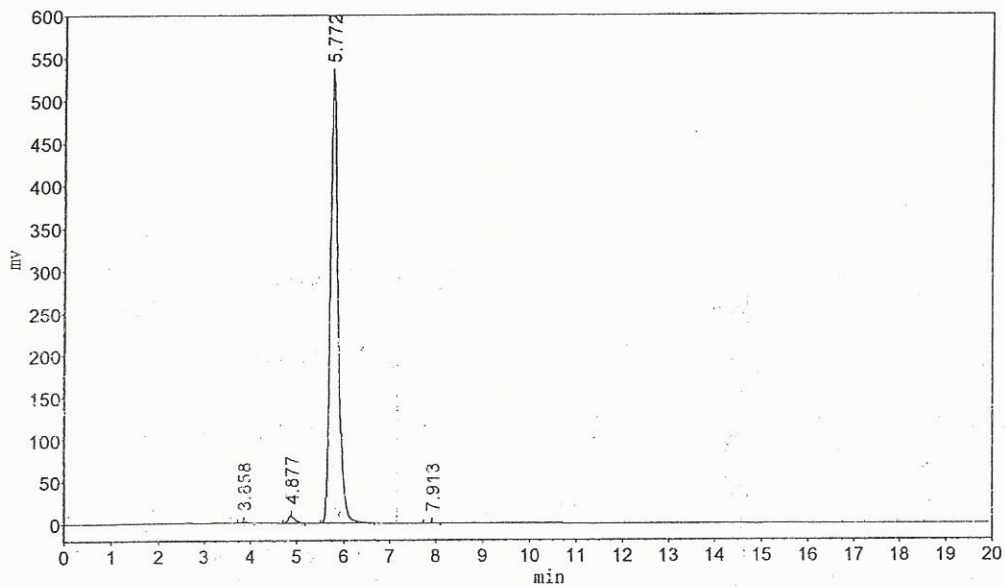
e-mail: chemical@indofinechemical.com



HPLC ANALYSIS

Mobile Phase: Methanol - Water 85: 15
Flow rate : 1.0 ml/min
Wavelength : 343nm
Temperature : 25°C

Catalog No.: P-003
Product Name: Piperine
Lot No.: 1608879

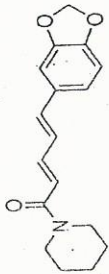


Peak Table

Peak#	RT	Height	Area	%Area
1	3.858	1158.182	9989.598	0.1551
2	4.877	8427.432	84013.805	1.3041
3	5.772	529547.938	6344999.500	98.4933
4	7.913	285.585	3061.100	0.0475
		539419.137	6442064.002	100.0000



INDOFINE Chemical Company, Inc.
 121 STRYKER LANE
 BLDG. 30, SUITE 1
 HILLSBOROUGH, NJ 08844



Catalog No.: P-003
 Product Name: Piperine
 Lot No.: 1608879



Current Data Parameters

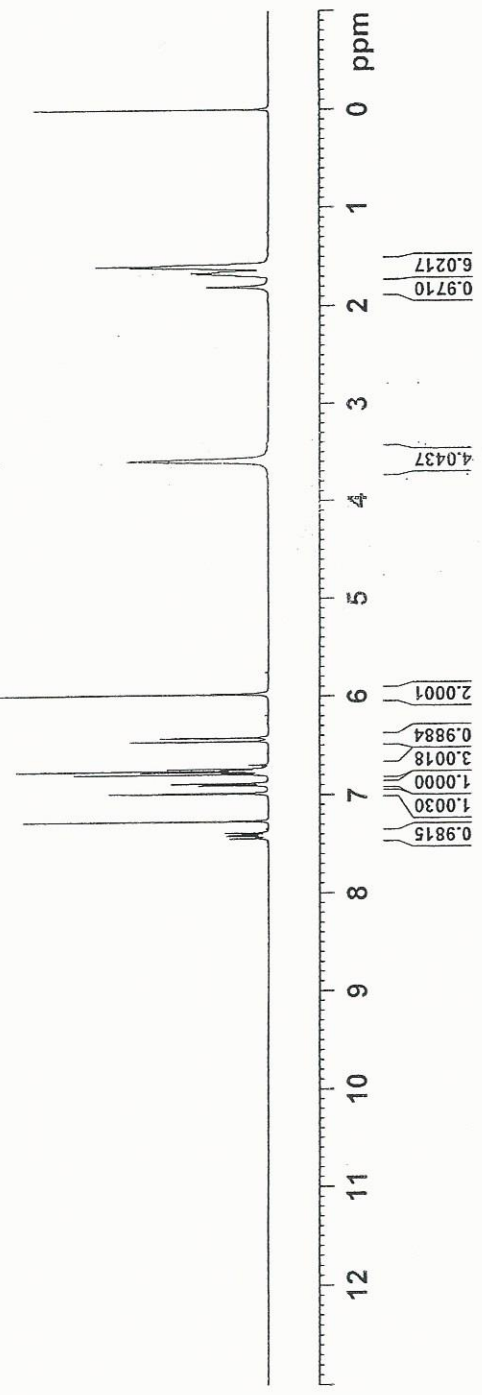
```

EXPNO      10
PROCNO     1
F2 - Acquisition Parameters
Date_      20100916
Time       12.00
INSTRUM    spect
PROBHD     5 mmH PABBO BB/
PULPROG    zg30
TD         65536
SOLVENT    CDCl3
DS         12
SMH        8223.665 Hz
FIDRES     0.125483 Hz
AQ         3.9846387 sec
RG         129.89
SH         60.000 usec
DSB        0.000 usec
TE         296.6 K
D1         1.00000000 sec
TDO        1
***** CHANNEL f1 *****
NUC1       13
P1         12.80 usec
P1M1      15.8489998 N
SFO1      400.1632013 MHz
F2 - Processing parameters
SI         65536
SF         400.1609988 MHz
WDW        EM
SSB        0
LB         0.30 Hz
GB         0
PC         1.00
  
```

7.442
7.439
7.420
7.417
7.406
7.401
7.385
7.380
7.264
6.985
6.981
6.905
6.901
6.885
6.881
6.790
6.770
6.754
6.732
6.456
6.419
5.978

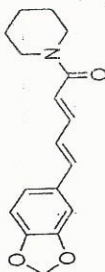
3.584

1.804
1.689
1.671
1.659
1.647
1.617
1.603
1.591
1.578
1.564





INDOFINE Chemical Company, Inc.
 121 STRYKER LANE
 BLDG. 30, SUITE 1
 HILLSBOROUGH, NJ 08844



Catalog No.: P-003
 Product Name: Piperine
 Lot No.: 1608879

7.439
 7.420
 7.417
 7.406
 7.401
 7.385
 7.380

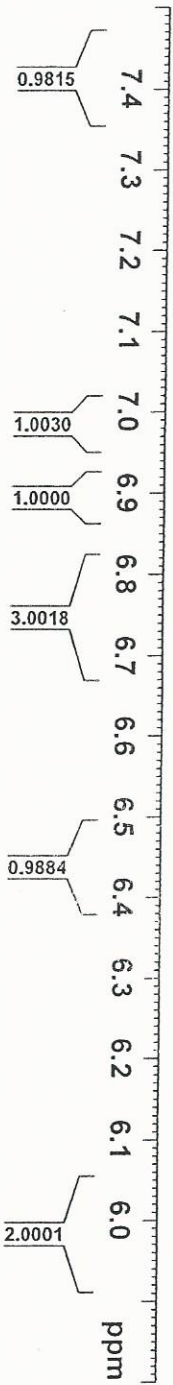
7.264

6.985
 6.981
 6.905
 6.901
 6.885
 6.881

6.790
 6.770
 6.754
 6.732

6.456
 6.419

5.978



Current Data Parameters
 EXPNO 10
 PROCNO 1
 F2 - Acquisition Parameters
 Date_ 20160916
 Time_ 1.38
 INSTRUM spect
 PROBHD 5 mm PABBO BB/
 PULPROG zgpg30
 TD 65536
 SFO100 400.152013
 SOLVENT CDCl3
 NS 16
 DS 2
 SWH 8223.685 Hz
 FIDRES 0.122493 Hz
 A10DRES 3.137449 Hz
 RG 129 Hz
 DM 60.800 usec
 DE 8.00 usec
 TE 296.6 K
 D1 1.00000000 sec
 TDO 1
 ***** CHANNEL f1 *****
 NUC1 1H
 P1 13.80 usec
 PLM1 15.84899998 W
 SFO1 400.152013 MHz
 F2 - Processing parameters
 SI 65536
 SF 400.160068 MHz
 MDW 0 BM
 SSB 0
 LB 0 0.30 Hz
 GB 0
 PC 1.00