



INDOFINE Chemical Company, Inc.

121 Stryker Lane, Bldg. 30, Suite 1 • Hillsborough, NJ 08844 • U.S.A.

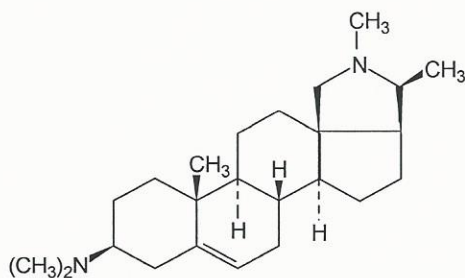
Phone: (908) 359-6778 • FAX: (908) 359-1179

website: www.indofinechemical.com

e-mail: chemical@indofinechemical.com

CERTIFICATE OF ANALYSIS

<u>Catalog Number:</u>	C-003
<u>Product Name:</u>	CONESSINE (Nerine, Roquessine, Wrightine)
<u>Cas Number:</u>	[546-06-5]
<u>Lot Number:</u>	1510682
<u>Chemical Formula:</u>	C ₂₄ H ₄₀ N ₂
<u>Molecular Weight:</u>	356.59
<u>Melting Point:</u>	120-122°C
<u>Appearance:</u>	White crystalline powder
<u>TLC:</u>	Chloroform : methanol (9:1)
<u>NMR Spectrum:</u>	Enclosed (conforms to the structure)
<u>Moisture (KF)</u>	0.32%
<u>Storage:</u>	Store in a cool, dry place. Protected from light.
<u>Purity(HPLC):</u>	99.33%





INDOFINE Chemical Company, Inc.

121 Stryker Lane, Bldg. 30, Suite 1 • Hillsborough, NJ 08844 • U.S.A.

Phone: (908) 359-6778 • FAX: (908) 359-1179

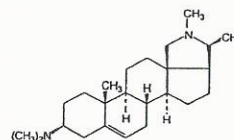
website: www.indofinechemical.com

e-mail: chemical@indofinechemical.com

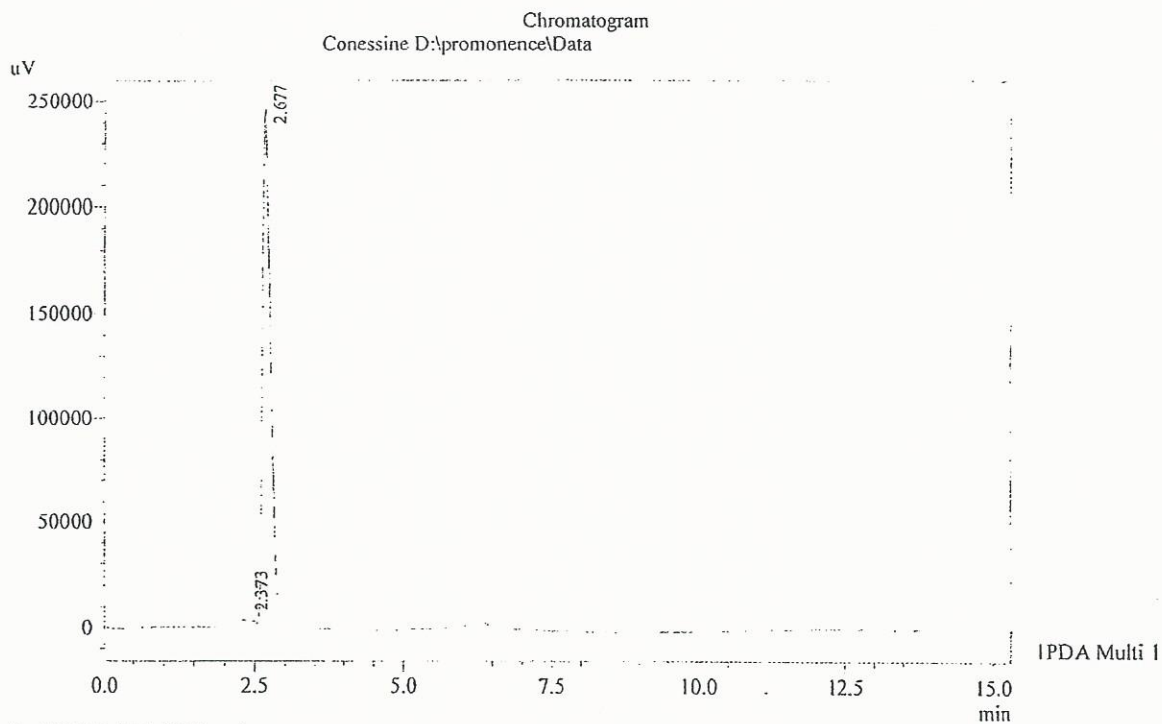
HPLC ANALYSIS

Acquired by : Admin
Sample Name : Conessine
Sample ID : 100 gm
Injection Volume : 20 uL
Data Filename : 290915E.lcd
Method Filename : Linear Isocratic.M.lcm

Catalog No.: C-003
Product Name: Conessine
Lot No.: 1510682



Column : LUNA C-18(2), (250mm x4.6mm 5.0μ)
Flow : 1.000 mL/min.
Mobile Phase : A(50% of 0.1% Perchloric acid in water) B(50% of Acetonitrile)



I PDA Multi I / 200nm 4nm

PeakTable

Peak#	Name	Ret. Time	Area	Area %	Relative Retention Time
1	RT:2.373	2.373	14978	0.67	0.89
2	Conessine	2.677	2218779	99.33	1.00
Total			2233757	100.00	



INDOFINE Chemical Company, Inc.

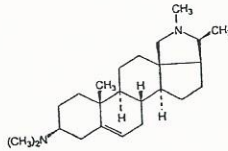
121 Stryker Lane, Bldg. 30, Suite 1 • Hillsborough, NJ 08844 • U.S.A.

Phone: (908) 359-6778 • FAX: (908) 359-1179

website: www.indofinechemical.com

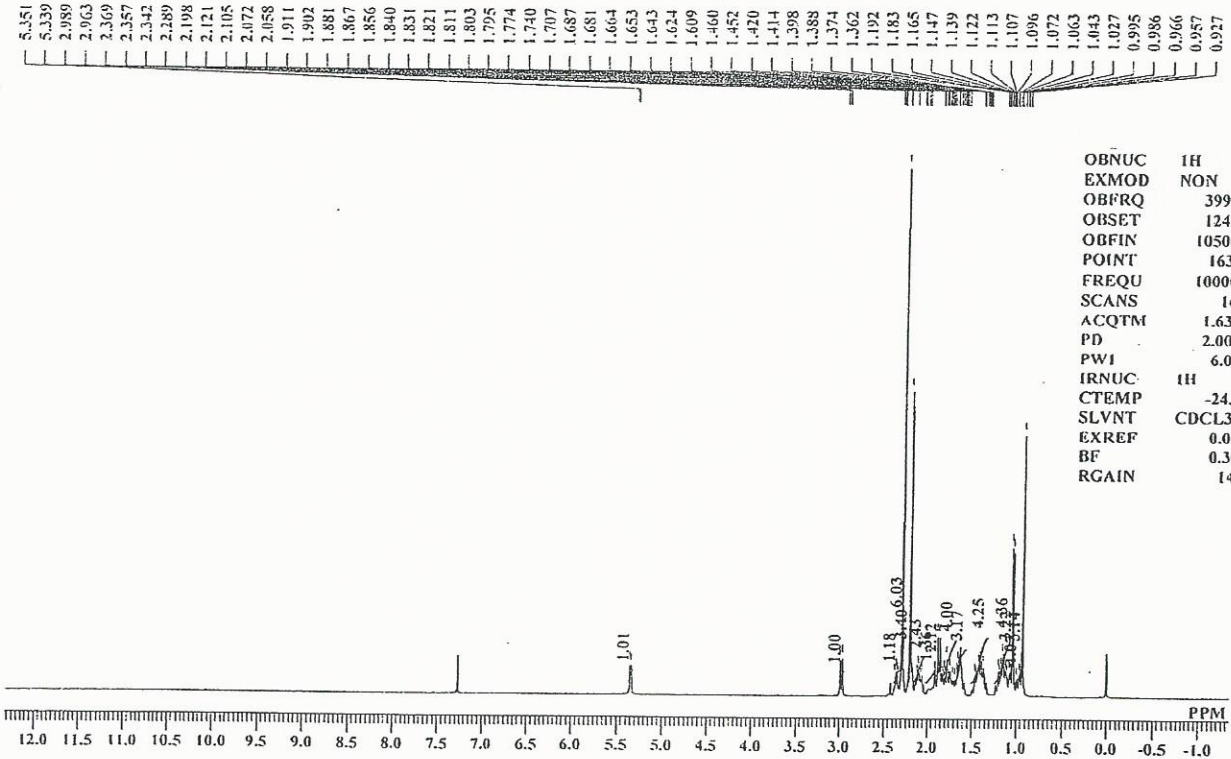
e-mail: chemical@indofinechemical.com

Catalog No.: C-003
Product Name: Conessine
Lot No.: 1510682



CNS-100g 1H NMR CDCl3

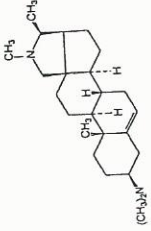
Analysed By : GRY





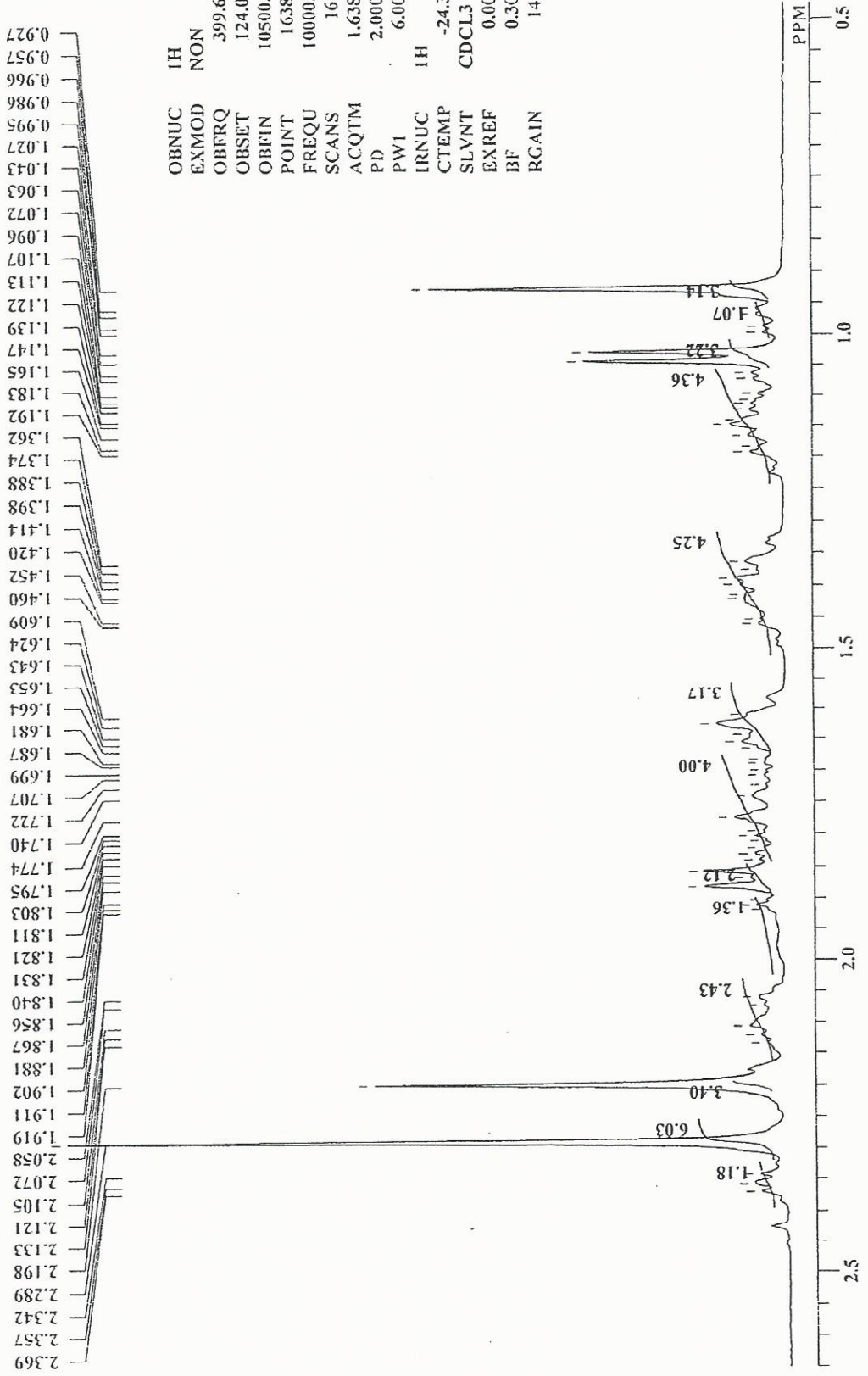
INDOFINE Chemical Company, Inc.
121 STRYKER LANE
BLDG. 30, SUITE 1
HILLSBOROUGH, NJ 08844

Catalog No.: C-003
Product Name: Conessine
Lot No.: 1510682



CNS-100g 1H NMR CDC13

Analysed By : GRY



INDOFINE Chemical Company, Inc.

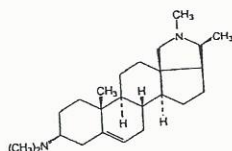
121 Stryker Lane, Bldg. 30, Suite 1 • Hillsborough, NJ 08844 • U.S.A.

Phone: (908) 359-6778 • FAX: (908) 359-1179

website: www.indofinechemical.com

e-mail: chemical@indofinechemical.com

Catalog No.: C-003
Product Name: Conessine
Lot No.: 1510682



CNS-100g 1H NMR CDCl3

Analysed By: GRY

5.351
5.339

2.989
2.963

OBNUC	1H
EXMOD	NON
OBFRQ	399.65 MHz
OBSET	124.00 KHz
OBFIN	10500.00 Hz
POINT	16384
FREQ	10000.00 Hz
SCANS	16
ACQTM	1.6384 sec
PD	2.0000 sec
PW1	6.00 usec
IRNUC	1H
CTEMP	-24.3 c
SLVNT	CDCL3
EXREF	0.00 ppm
BF	0.30 Hz
RGAIN	14

