



# INDOFINE Chemical Company, Inc.

121 Stryker Lane, Bldg. 30, Suite 1 • Hillsborough, NJ 08844 • U.S.A.

Phone: (908) 359-6778 • FAX: (908) 359-1179

website: [www.indofinechemical.com](http://www.indofinechemical.com)

e-mail: [chemical@indofinechemical.com](mailto:chemical@indofinechemical.com)

## CERTIFICATE OF ANALYSIS

Catalog Number: C-003

Product Name: **CONESSINE**  
(Nerine, Roquessine, Wrightine)

Cas Number: [546-06-5]

Lot Number: 1508658

Chemical Formula: C<sub>24</sub>H<sub>40</sub>N<sub>2</sub>

Molecular Weight: 356.59

Melting Point: 119-121°C

Appearance: White crystalline powder

TLC: Chloroform : methanol (9:1)

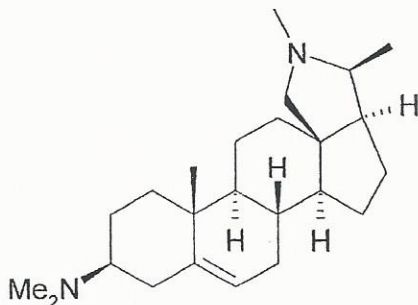
Solubility: Soluble in chloroform

NMR Spectrum: Enclosed (conforms to the structure)

Moisture (KF) 0.38%

Storage: Store in a cool, dry place. Protect from light.

Purity(HPLC): 99.25%





# INDOFINE Chemical Company, Inc.

121 Stryker Lane, Bldg. 30, Suite 1 • Hillsborough, NJ 08844 • U.S.A.

Phone: (908) 359-6778 • FAX: (908) 359-1179

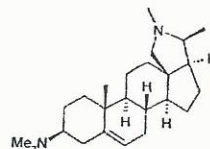
website: [www.indofinechemical.com](http://www.indofinechemical.com)

e-mail: [chemical@indofinechemical.com](mailto:chemical@indofinechemical.com)

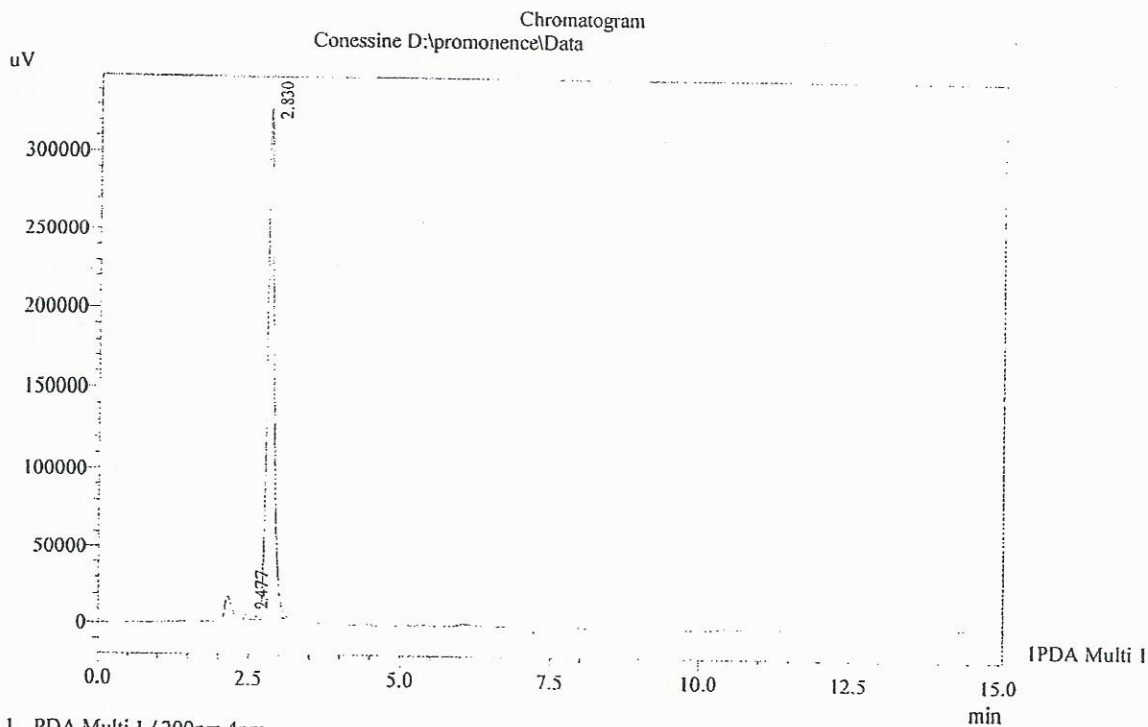
## HPLC ANALYSIS

Acquired by : Admin  
Sample Name : Conessine  
Injection Volume : 20 uL  
Data Filename : 240815B.lcd  
Method Filename : Linear Isocratic.M.lcm

Catalog No.: C-003  
Product Name: Conessine  
Lot No.: 1508658



Column : LUNA C-18(2), (250mm x4.6mm 5.0μ)  
Flow : 1.000 mL/min.  
Mobile Phase : A(50% of 0.1% Perchloric acid in water) B(50% of Acetonitrile)



PDA Ch1 200nm 4nm

PeakTable

Peak#	Name	Ret. Time	Area	Area %	Relative Retention Time
1	RT:2.477	2.477	19721	0.75	0.88
2	Conessine	2.830	2619251	99.25	1.00
Total			2638972	100.00	



# INDOFINE Chemical Company, Inc.

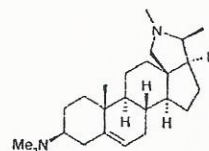
121 Stryker Lane, Bldg. 30, Suite 1 • Hillsborough, NJ 08844 • U.S.A.

Phone: (908) 359-6778 • FAX: (908) 359-1179

website: [www.indofinechemical.com](http://www.indofinechemical.com)

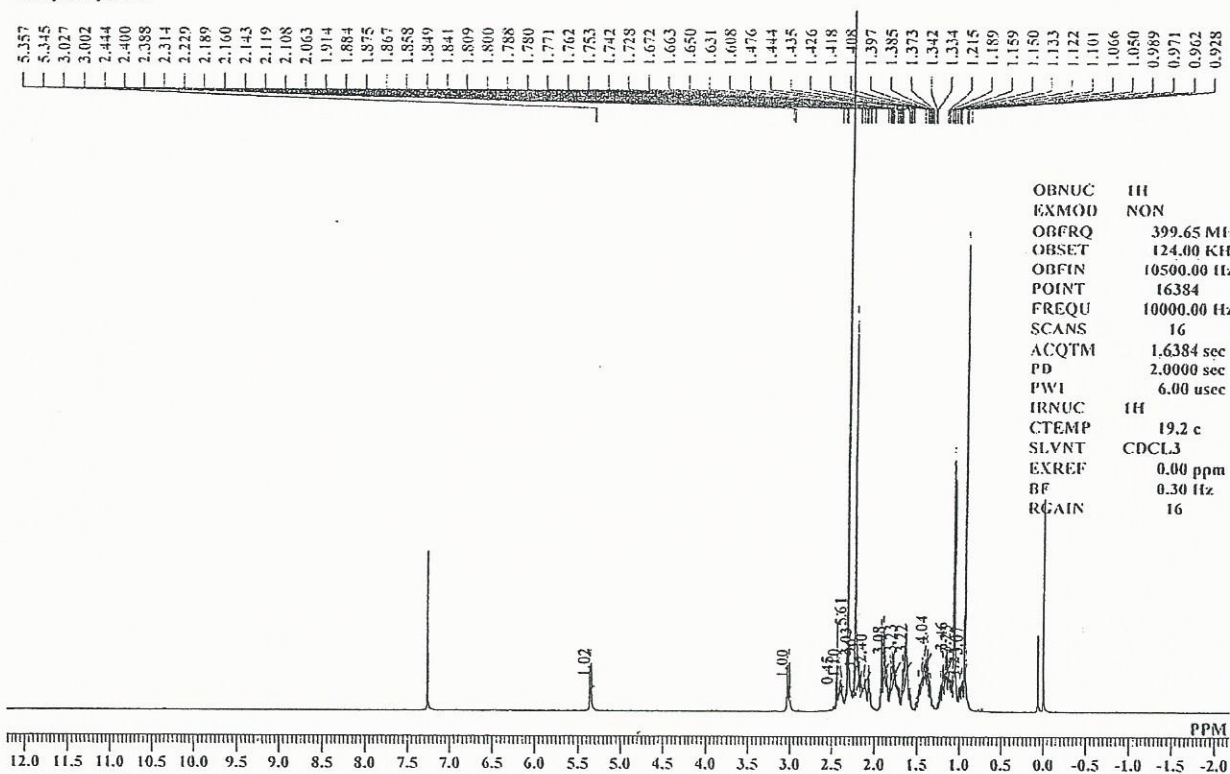
e-mail: [chemical@indofinechemical.com](mailto:chemical@indofinechemical.com)

Catalog No.: C-003  
Product Name: Conessine  
Lot No.: 1508658



<sup>1</sup>H NMR CDCl<sub>3</sub>

Analyzed By: SPM



# ICG INDOFINE Chemical Company, Inc.

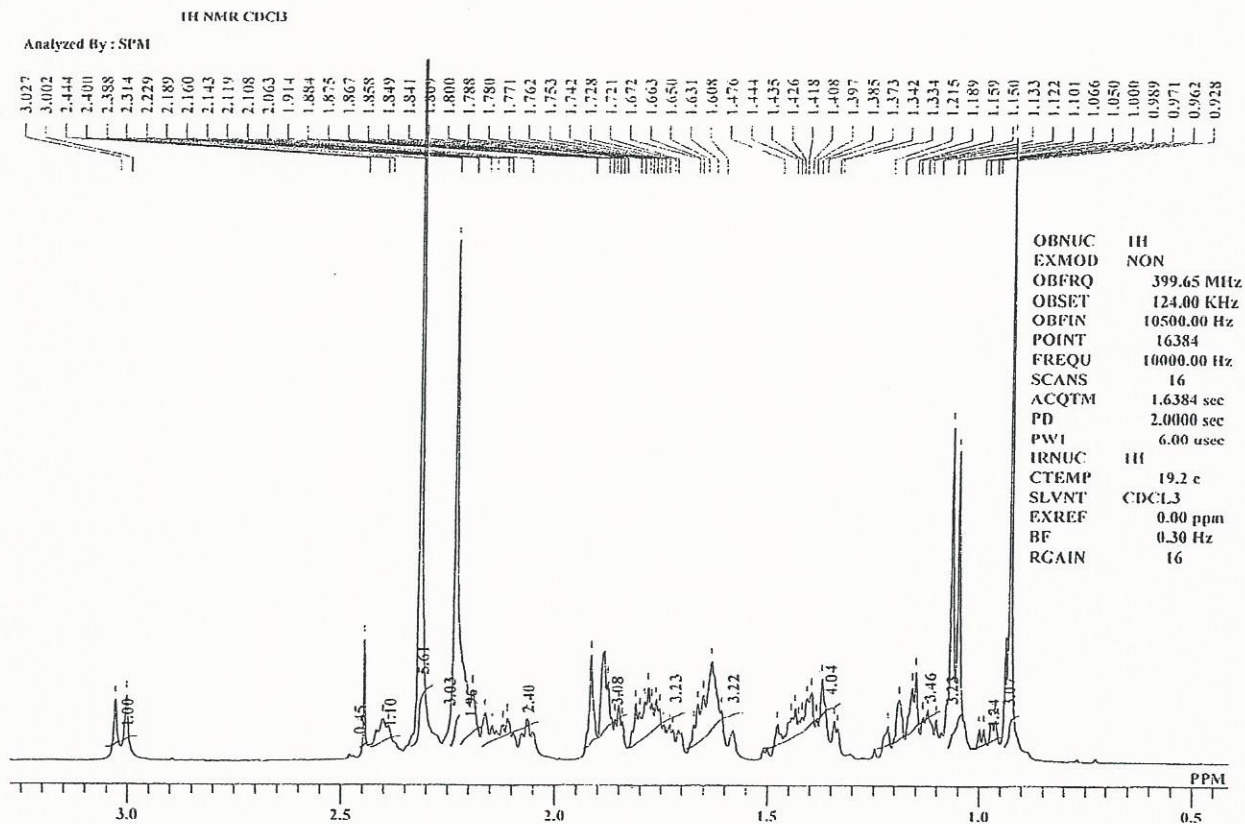
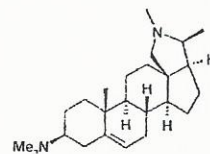
121 Stryker Lane, Bldg. 30, Suite 1 • Hillsborough, NJ 08844 • U.S.A.

Phone: (908) 359-6778 • FAX: (908) 359-1179

website: [www.indofinechemical.com](http://www.indofinechemical.com)

e-mail: [chemical@indofinechemical.com](mailto:chemical@indofinechemical.com)

Catalog No.: C-003  
Product Name: Conessine  
Lot No.: 1508658



# ICG INDOFINE Chemical Company, Inc.

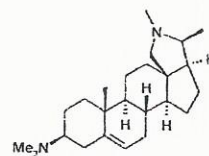
121 Stryker Lane, Bldg. 30, Suite 1 • Hillsborough, NJ 08844 • U.S.A.

Phone: (908) 359-6778 • FAX: (908) 359-1179

website: [www.indofinechemical.com](http://www.indofinechemical.com)

e-mail: [chemical@indofinechemical.com](mailto:chemical@indofinechemical.com)

Catalog No.: C-003  
Product Name: Conessine  
Lot No.: 1508658



<sup>1</sup>H NMR CDCl<sub>3</sub>

Analyzed By: SPM

5.357  
5.345

OBNUC	<sup>1</sup> H
EXMOD	NON
OBFRQ	399.65 MHz
OBSET	124.00 KHz
OBFIN	10500.00 Hz
POINT	16384
FREQU	10000.00 Hz
SCANS	16
ACQTM	1.6384 sec
PD	2.0000 sec
PWI	6.00 usec
IRNUC	<sup>1</sup> H
CTEMP	19.2 c
SLVNT	CDCl <sub>3</sub>
EXREF	0.00 ppm
BF	0.30 Hz
RGAIN	16

