



# INDOFINE Chemical Company, Inc.

121 Stryker Lane, Bldg. 30, Suite 1 • Hillsborough, NJ 08844 • U.S.A.

Phone: (908) 359-6778 • FAX: (908) 359-1179

website: [www.indofinechemical.com](http://www.indofinechemical.com)

e-mail: [chemical@indofinechemical.com](mailto:chemical@indofinechemical.com)

## CERTIFICATE OF ANALYSIS

Cat No.: C-003

Product: **CONESSINE**  
(Nerine, Roquessine, Wrightine)

Cas Number: [546-06-5]

Lot Number: 1011083

Chemical Formula:  $C_{24}H_{40}N_2$

Molecular Weight: 356.59

Melting Point: 120-122°C

Source: From *Holarrhena antidysentrica* seeds

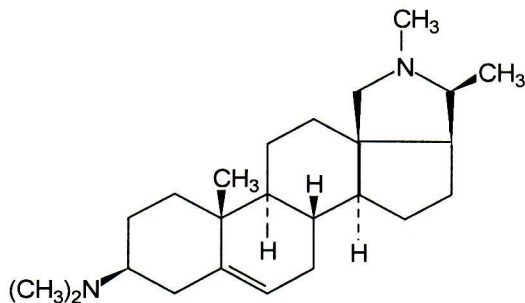
Appearance: White crystalline powder

TLC: Chloroform : methanol (9:1)

Solubility: Gives a clear solution in Chloroform

Storage: Cool dry place

Purity: 99.75%





# INDOFINE Chemical Company, Inc.

121 Stryker Lane, Bldg. 30, Suite 1 • Hillsborough, NJ 08844 • U.S.A.

Phone: (908) 359-6778 • FAX: (908) 359-1179

website: [www.indofinechemical.com](http://www.indofinechemical.com)

e-mail: [chemical@indofinechemical.com](mailto:chemical@indofinechemical.com)

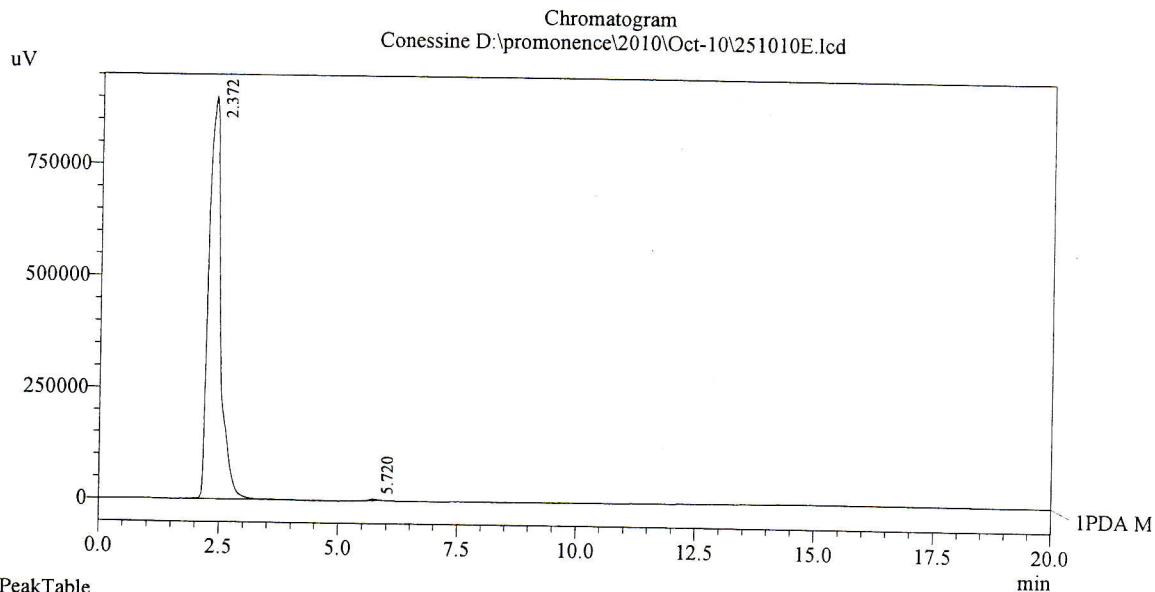
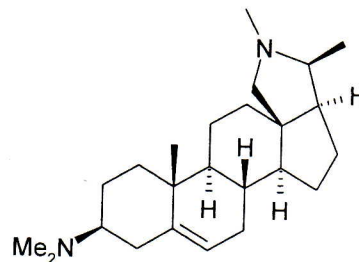
## HPLC ANALYSIS

Date Acquired : 10/25/2010 5:21:21 PM  
Acquired by : Madhuri  
Sample Name : Conessine  
Sample ID : 1.5 kg  
Injection Volume : 20 uL  
Data Filename : 251010E.lcd  
Method Filename : Linear Isocratic.M.lcm

Cat. No.: C-003  
Product: Conessine  
Lot No.: 1011083

### Description:

Column : Inertsil C-18, 250X4.6mm 5.0µm  
Flow : 1.000ML/min.  
Mobile Phase : A(50% of 0.1% Perchloric acid) : B(50% ACN)



### PeakTable

PDA Ch1 200nm 4nm

Peak#	Ret. Time	Area	Height	Area %
1	2.372	15928924	900732	99.751
2	5.720	39704	3414	0.249
Total		15968628	904146	100.000



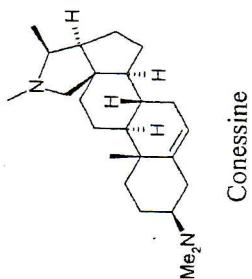
# INDOFINE Chemical Company, Inc.

121 Stryker Lane, Bldg. 30, Suite 1 • Hillsborough, NJ 08844 • U.S.A.

Phone: (908) 359-6778 • FAX: (908) 359-1179

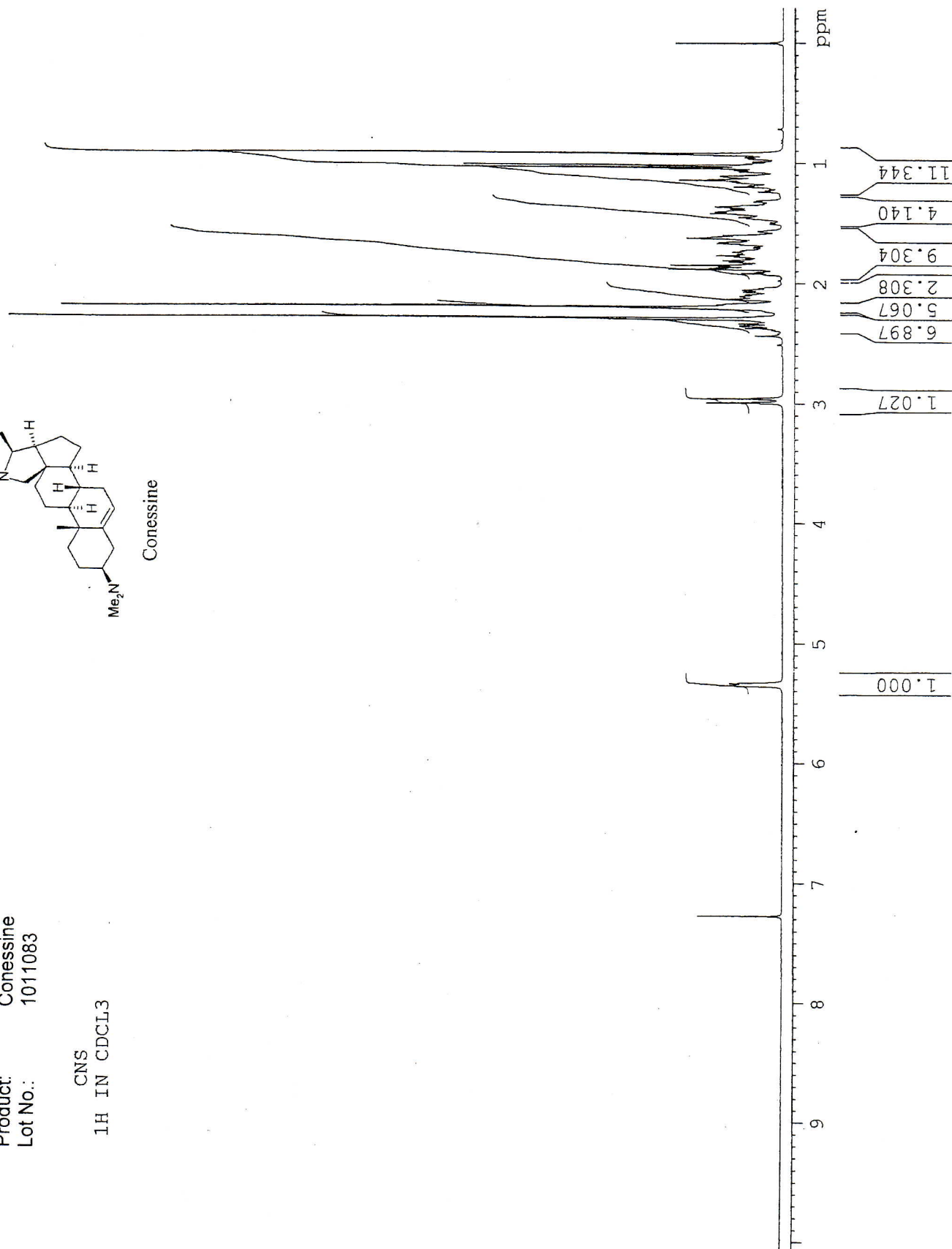
website: [www.indofinechemical.com](http://www.indofinechemical.com)

e-mail: [chemical@indofinechemical.com](mailto:chemical@indofinechemical.com)



Cat. No.: C-003  
Product: Conessine  
Lot No.: 1011083

CNS  
1H IN CDCL3





# INDOFINE Chemical Company, Inc.

121 Stryker Lane, Bldg. 30, Suite 1 • Hillsborough, NJ 08844 • U.S.A.

Phone: (908) 359-6778 • FAX: (908) 359-1179

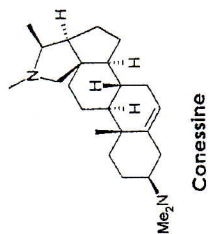
website: [www.indofinechemical.com](http://www.indofinechemical.com)

e-mail: [chemical@indofinechemical.com](mailto:chemical@indofinechemical.com)

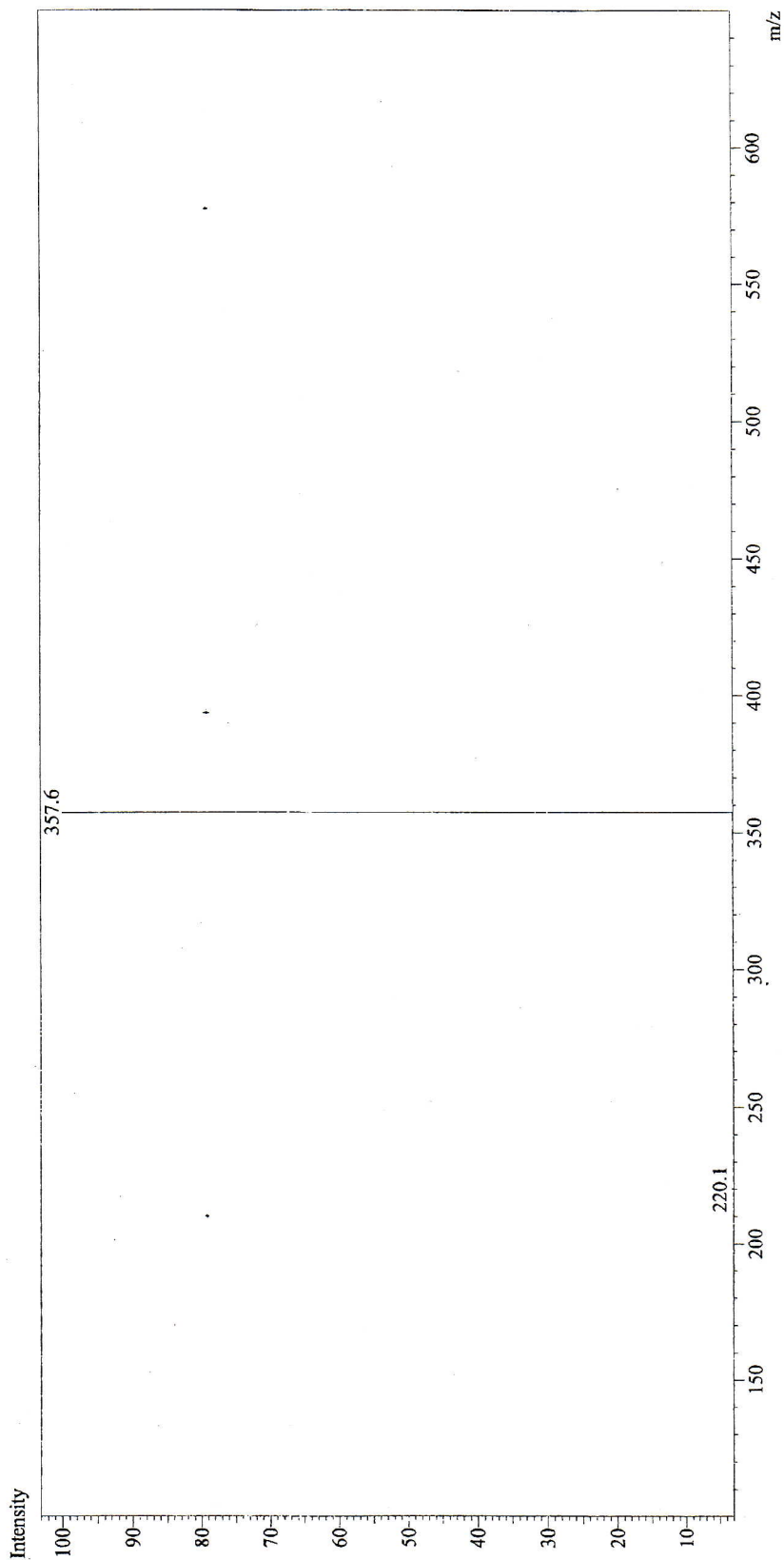
Cat. No.: C-003  
Product: Conessine  
Lot No.: 1011083

Sample Information  
Sample Name : CNS  
Sample ID : -  
Data File : CNS-01.lcd  
Method File : Test1 (ESI).lcm  
Acquired by : YRB  
Date Acquired : 10/8/2010 6:43:55 PM

Probe : ESI  
Polarity: Pos



MS Spectrum Graph





# INDOFINE Chemical Company, Inc.

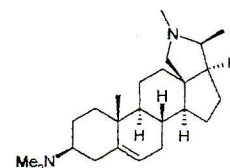
121 Stryker Lane, Bldg. 30, Suite 1 • Hillsborough, NJ 08844 • U.S.A.

Phone: (908) 359-6778 • FAX: (908) 359-1179

website: [www.indofinechemical.com](http://www.indofinechemical.com)

e-mail: [chemical@indofinechemical.com](mailto:chemical@indofinechemical.com)

Cat. No.: C-003  
Product: Conessine  
Lot No.: 1011083



Conessine

Model	P-1030 (A017560639)
Date	10/25/2010 5:25:16PM
Operator	GMR
Sample	CNS-FINAL
Comment	C=1.0% WV in ETOH
Mode	Specific O.R.
Light	Na
Wavelength	589nm
Cell path	50.00 mm
Concentration	1.0400 w/v%
Factor	1.0000
Blank	-0.0079 deg
Interval	5 sec
Integration	5 sec
Average	20.7692
S.D.	0.2102
C.V.	1.0122 %

No.	Sample No	Data	Temp.
1	1( 1/ 5)	20.635	19.5
2	1( 2/ 5)	21.019	19.8
3	1( 3/ 5)	20.538	19.9
4	1( 4/ 5)	20.692	20.2
5	1( 5/ 5)	20.962	20.4