



# INDOFINE Chemical Company, Inc.

121 Stryker Lane, Bldg. 30, Suite 1 • Hillsborough, NJ 08844 • U.S.A.

Phone: (908) 359-6778 • FAX: (908) 359-1179

website: [www.indofinechemical.com](http://www.indofinechemical.com)

e-mail: [chemical@indofinechemical.com](mailto:chemical@indofinechemical.com)

## CERTIFICATE OF ANALYSIS

Cat No.: B-003

Product: **7,8-BENZOFLAVONE**  
( $\alpha$ -Naphthoflavone)

Gas Number: [604-59-1]

Lot Number: 1212267

Chemical Formula:  $C_{19}H_{12}O_2$

Molecular Weight: 272.3

Melting Point: 156-157°C

Appearance: White powder

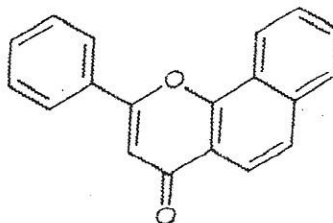
Solubility: Soluble in chloroform

TLC: Hexane:Ethyl acetate (7:3)

NMR Spectrum: Enclosed

Storage: Store in cool dry place

Purity (HPLC): 99.78%





# INDOFINE Chemical Company, Inc.

121 Stryker Lane, Bldg. 30, Suite 1 • Hillsborough, NJ 08844 • U.S.A.

Phone: (908) 359-6778 • FAX: (908) 359-1179

website: [www.indofinechemical.com](http://www.indofinechemical.com)

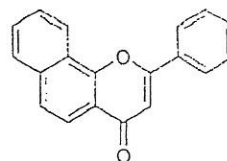
e-mail: [chemical@indofinechemical.com](mailto:chemical@indofinechemical.com)

## HPLC ANALYSIS

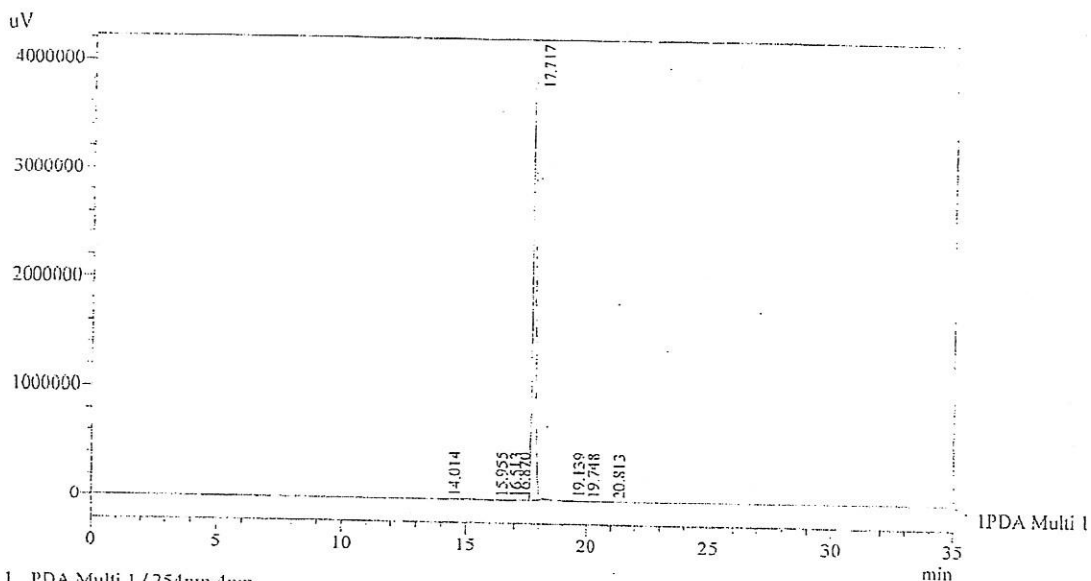
Acquired by : Sanjeev  
Sample Name : 7,8-Benzoflavone (Alpha-Naphthoflavone)  
Sample ID : 1.3Kg Lot (Herborganics)  
Injection Volume : 20  $\mu$ L  
Data Filename : 121012F.lcd  
Method Filename : Linear Gradient.M.lcm

Catalog no.: B-003  
Product name: 7,8-Benzoflavone ( $\alpha$ -Naphthoflavone)  
Lot No.: 1212267

Column : LUNA C-18(2), (250mm x4.6mm 5.0 $\mu$ )  
Flow : 1.000 mL/min.  
Mobile Phase : A(0.05% TFA in water) B(Acetonitrile)  
0.01 90 10  
12.0 10 90  
20.0 10 90  
25.0 90 10  
35.0 90 10



Chromatogram



1 PDA Multi 1 / 254nm 4nm

PeakTable

Peak#	Name	Ret. Time	Area	Area %	Relative Retention Time
1	RT:14.014	14.014	11902	0.03	0.79
2	RT:15.955	15.955	6185	0.02	0.90
3	RT:16.513	16.513	11428	0.03	0.93
4	RT:16.870	16.870	6292	0.02	0.95
5	7,8-Benzoflavone	17.717	38887962	99.79	1.00
6	RT:19.139	19.139	25746	0.07	1.08
7	RT:19.748	19.748	5967	0.02	1.11
8	RT:20.813	20.813	15524	0.04	1.17
Total			38971006	100.00	



# INDOFINE Chemical Company, Inc.

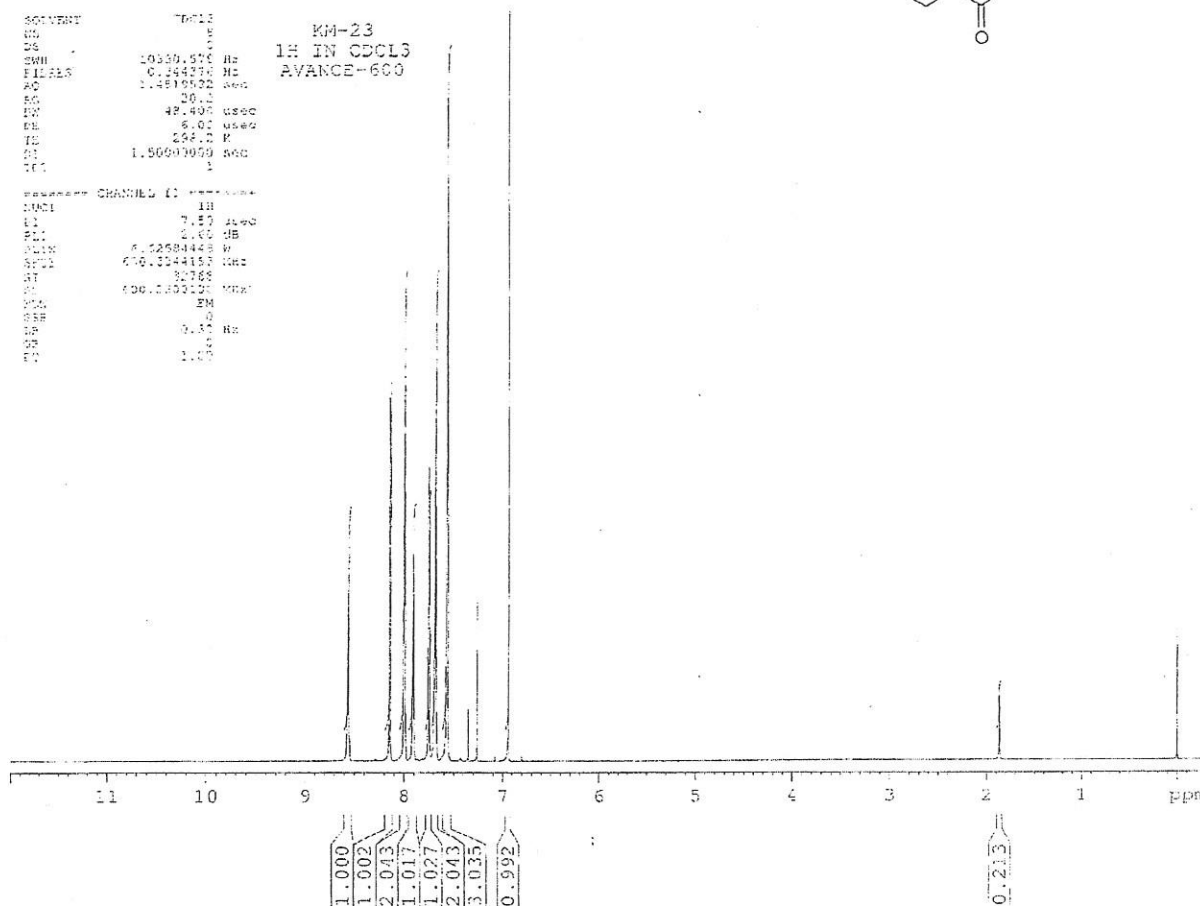
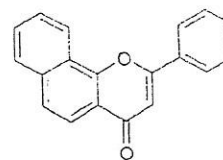
121 Stryker Lane, Bldg. 30, Suite 1 • Hillsborough, NJ 08844 • U.S.A.

Phone: (908) 359-6778 • FAX: (908) 359-1179

website: [www.indofinechemical.com](http://www.indofinechemical.com)

e-mail: [chemical@indofinechemical.com](mailto:chemical@indofinechemical.com)

Catalog no.: B-003  
Product name: 7,8-Benzoflavone ( $\alpha$ -Naphthoflavone)  
Lot No.: 1212267





# INDOFINE Chemical Company, Inc.

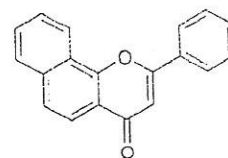
121 Stryker Lane, Bldg. 30, Suite 1 • Hillsborough, NJ 08844 • U.S.A.

Phone: (908) 359-6778 • FAX: (908) 359-1179

website: [www.indofinechemical.com](http://www.indofinechemical.com)

e-mail: [chemical@indofinechemical.com](mailto:chemical@indofinechemical.com)

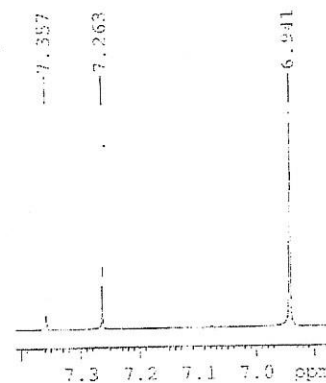
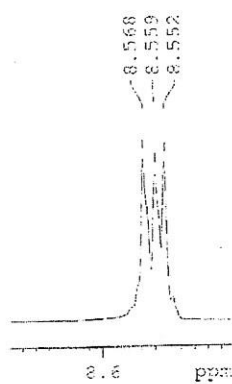
Catalog no.: B-003  
Product name: 7,8-Benzoflavone ( $\alpha$ -Naphthoflavone)  
Lot No.: 1212267



```

SOLVENT      CDCl3
SI           1
SC           1
SS           1
SMH          10070.538 Hz
FIDDER      0.144374 Hz
AQ          1.1019500 sec
RG          20.0
DM          42.450.000
DE          6.50.0000
TE          298.2 K
SI          1.50000000 sec
SI          1
----- CHANNEL f1 -----
NUC1        1H
P1          7.50.0000
P2          21.61.00
P3          6.42084445 K
P4          600.1344127 MHz
SI          32768
SF          630.1320120 MHz
SM          EM
SB          2
SE          0.77.00 Hz
SI          1.50
  
```

KM-23  
1H IN CDCl3  
AVANCE-600



8.154  
8.140

8.014  
8.007  
8.001  
7.999  
7.995  
7.991  
7.987

7.917  
7.912  
7.910  
7.904  
7.901

7.758  
7.744  
7.703  
7.695  
7.694  
7.693  
7.687  
7.681  
7.680  
7.670

7.578  
7.574  
7.568  
7.563  
7.557

