



# INDOFINE Chemical Company, Inc.

121 Stryker Lane, Bldg. 30, Suite 1 • Hillsborough, NJ 08844 • U.S.A.

Phone: (908) 359-6778 • FAX: (908) 359-1179

website: [www.indofinechemical.com](http://www.indofinechemical.com)

e-mail: [chemical@indofinechemical.com](mailto:chemical@indofinechemical.com)

## CERTIFICATE OF ANALYSIS

Catalog Number: 19-810

Product Name: **4'-CHLORO-7-HYDROXY-8-METHYLISOFLAVONE**

Lot Number: 0409242

Chemical Formula: C<sub>16</sub>H<sub>11</sub>ClO<sub>3</sub>

Molecular Weight: 286.72

Melting Point: >300°C

Appearance: White powder

TLC: Chloroform:Ethyl acetate (9:1)

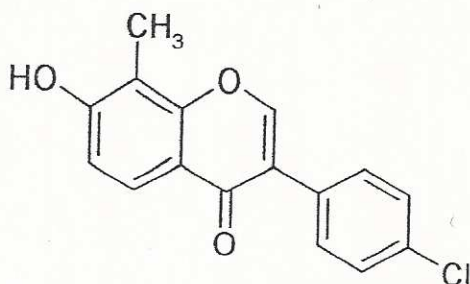
Solubility: Soluble in DMF

NMR Spectrum: Enclosed

IR Spectrum: Enclosed

Purity(HPLC): 99+%

Storage: Store in a cool, dry place





# INDOFINE Chemical Company, Inc.

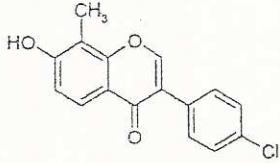
121 Stryker Lane, Bldg. 30, Suite 1 • Hillsborough, NJ 08844 • U.S.A.

Phone: (908) 359-6778 • FAX: (908) 359-1179

website: [www.indofinechemical.com](http://www.indofinechemical.com)

e-mail: [chemical@indofinechemical.com](mailto:chemical@indofinechemical.com)

## HPLC ANALYSIS



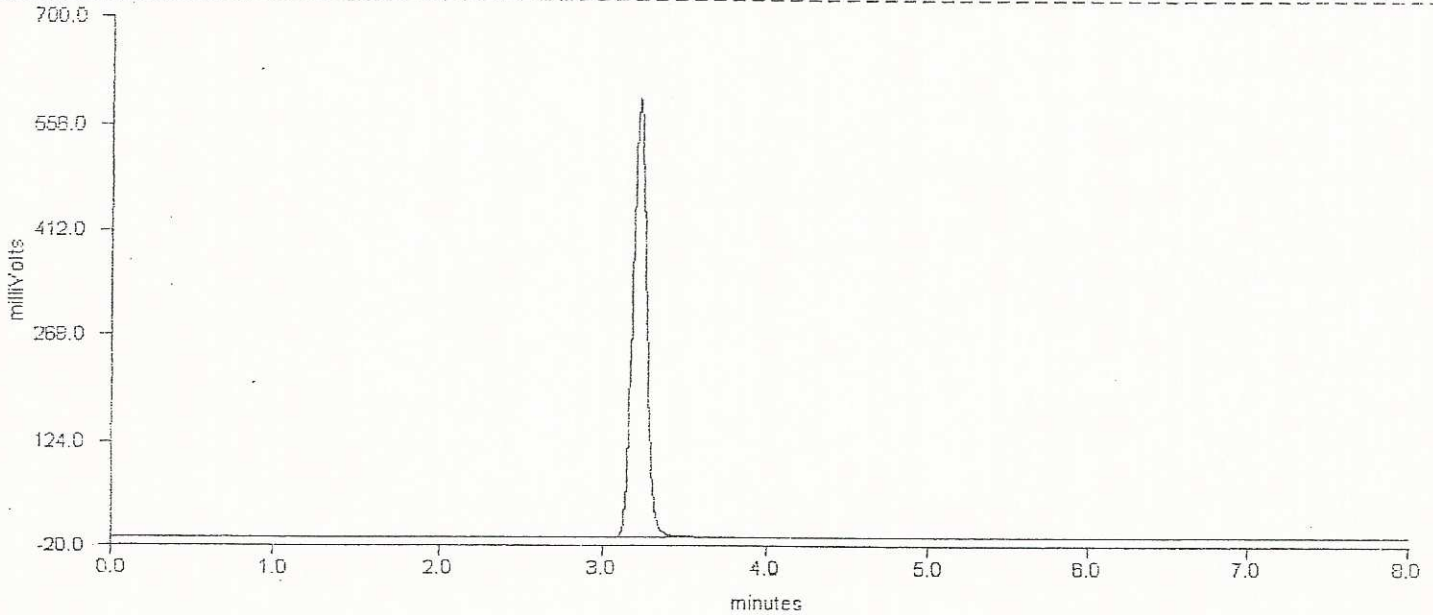
Catalog No.: 19-810

Product name: 4'-Chloro-7-hydroxy-8-methylisoflavone

Lot No.: 0409242

DELTA CHROMATOGRAPHY DATA SYSTEM

STRIPCHART PLOT FOR CHROMATOGRAM - c:\deltaw\data\np08-008.raw



DELTA CHROMATOGRAPHY DATA SYSTEM

LISTING PEAK TABLE FOR CHROMATOGRAM - c:\deltaw\data\np08-008.raw.RAW

#	Type Name	Ret. Time	Area(uVSec)	Height(mV)	Area Percent
1	BB	3.22	3518959	600.5	100.0



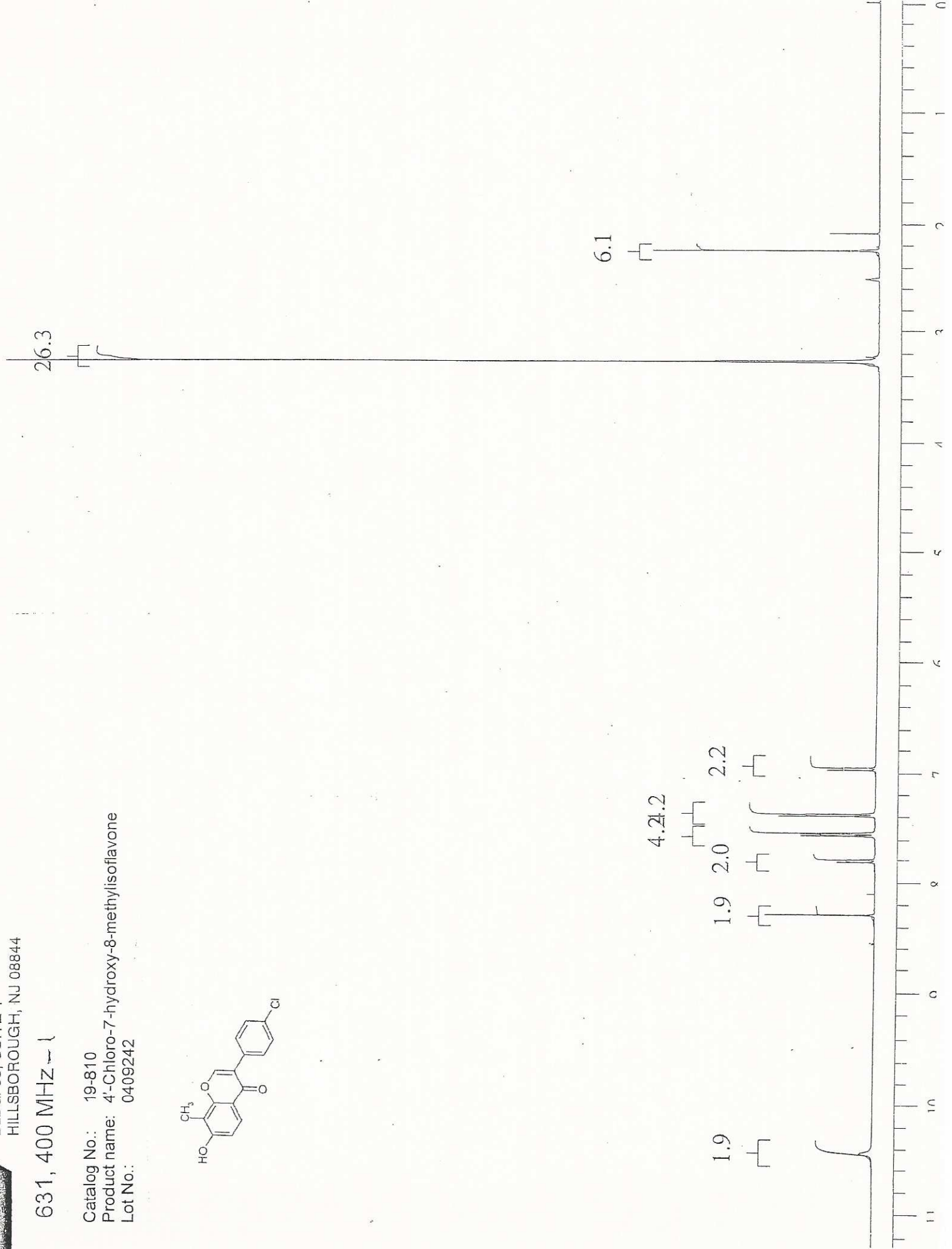
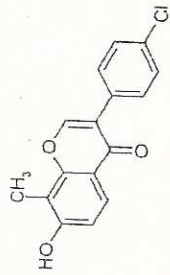
INDOFINE Chemical Company, Inc.  
121 STRYKER LANE  
BLDG. 30, SUITE 1  
HILLSBOROUGH, NJ 08844

631, 400 MHZ

Catalog No.: 19-810

Product name: 4'-Chloro-7-hydroxy-8-methylisoflavone

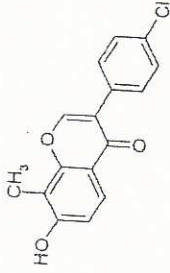
Lot No.: 0409242





INDOFINE Chemical Company, Inc.  
121 STRYKER LANE  
BLDG. 30, SUITE 1  
HILLSBOROUGH, NJ 08844

Catalog No.: 19-810  
Product name: 4'-Chloro-7-hydroxy-8-methylisoflavone  
Lot No.: 0409242



PERKIN ELMER

