



INDOFINE Chemical Company, Inc.

121 Stryker Lane, Bldg. 30, Suite 1 • Hillsborough, NJ 08844 • U.S.A.

Phone: (908) 359-6778 • FAX: (908) 359-1179

website: www.indofinechemical.com

e-mail: chemical@indofinechemical.com

CERTIFICATE OF ANALYSIS

Catalog Number: 19-637

Product Name: **ISOFLAVONE**

CAS Number: [574-12-9]

Lot Number: 0310156

Chemical Formula: C₁₅H₁₀O₂

Molecular Weight: 222.25

Melting Point: 132-135°C

Appearance: White powder

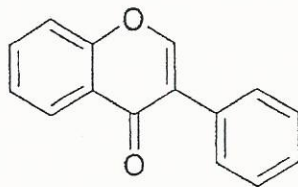
Solubility: Soluble in Chloroform

TLC: Hexane : Ethyl acetate (7:3)

NMR Spectrum: Enclosed (Confirms to the structure)

Storage: Store in a cool, dry place

Purity (HPLC): 99.29%





INDOFINE Chemical Company, Inc.

121 Stryker Lane, Bldg. 30, Suite 1 • Hillsborough, NJ 08844 • U.S.A.

Phone: (908) 359-6778 • FAX: (908) 359-1179

website: www.indofinechemical.com

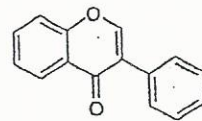
e-mail: chemical@indofinechemical.com

HPLC ANALYSIS

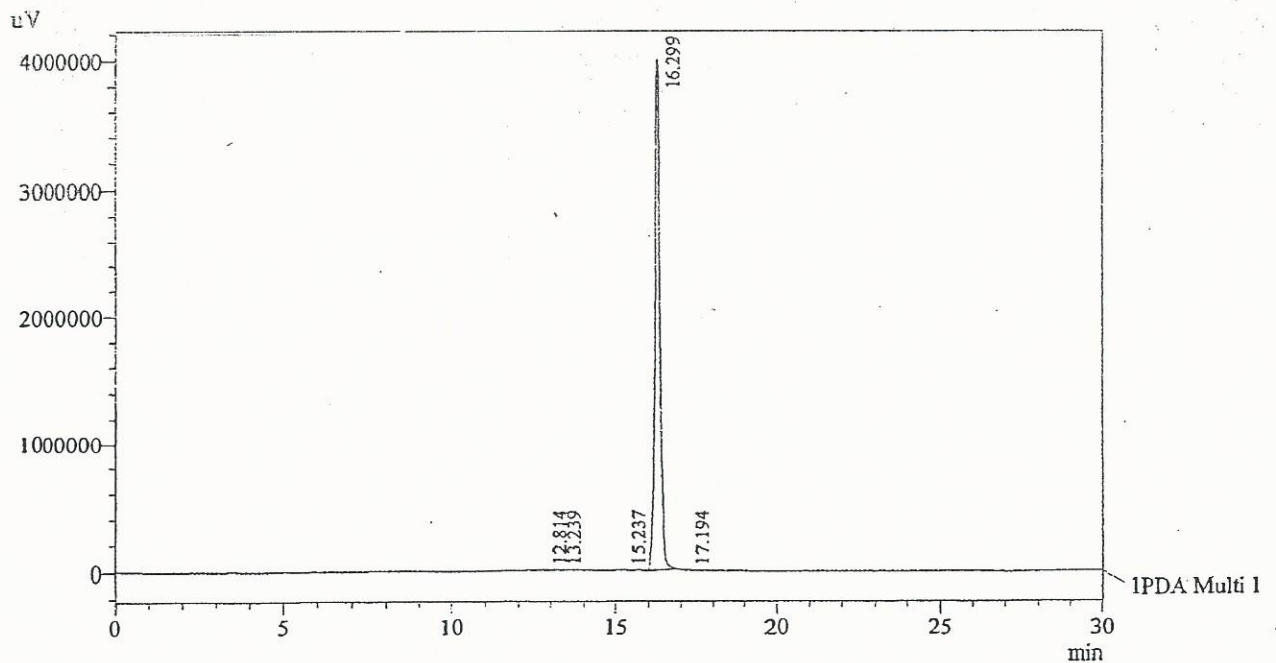
Acquired by : Sanjeev
 Sample Name : Isoflavone
 Sample ID : Lot No: 0310156
 Injection Volume : 20 uL
 Data Filename : 050613D.lcd
 Method Filename : Linear Gradient.M.lcm

Catalog No.: 19-637
 Product name: Isoflavone
 Lot No.: 0310156

Column : LUNA C-18(2), (250mm x4.6mm 5.0µ)
 Flow : 1.000 mL/min.
 Mobile Phase : A(0.05% TFA in water) B(Acetonitrile)
 0.01 90 10
 12.0 10 90
 20.0 10 90
 23.0 90 10
 30.0 90 10
 Diluent : Acetonitrile



Chromatogram



1 PDA Multi 1 / 254nm 4nm

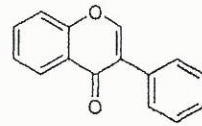
PeakTable

PDA Chl 254nm 4nm

Peak#	Name	Ret. Time	Area	Area %	Relative Retention Time
1	RT:12.814	12.814	131227	0.31	0.79
2	RT:13.239	13.239	40913	0.10	0.81
3	RT:15.237	15.237	119047	0.28	0.93
4	Isoflavone	16.299	42014890	99.29	1.00
5	RT:17.194	17.194	9579	0.02	1.05
Total			42315656	100.00	



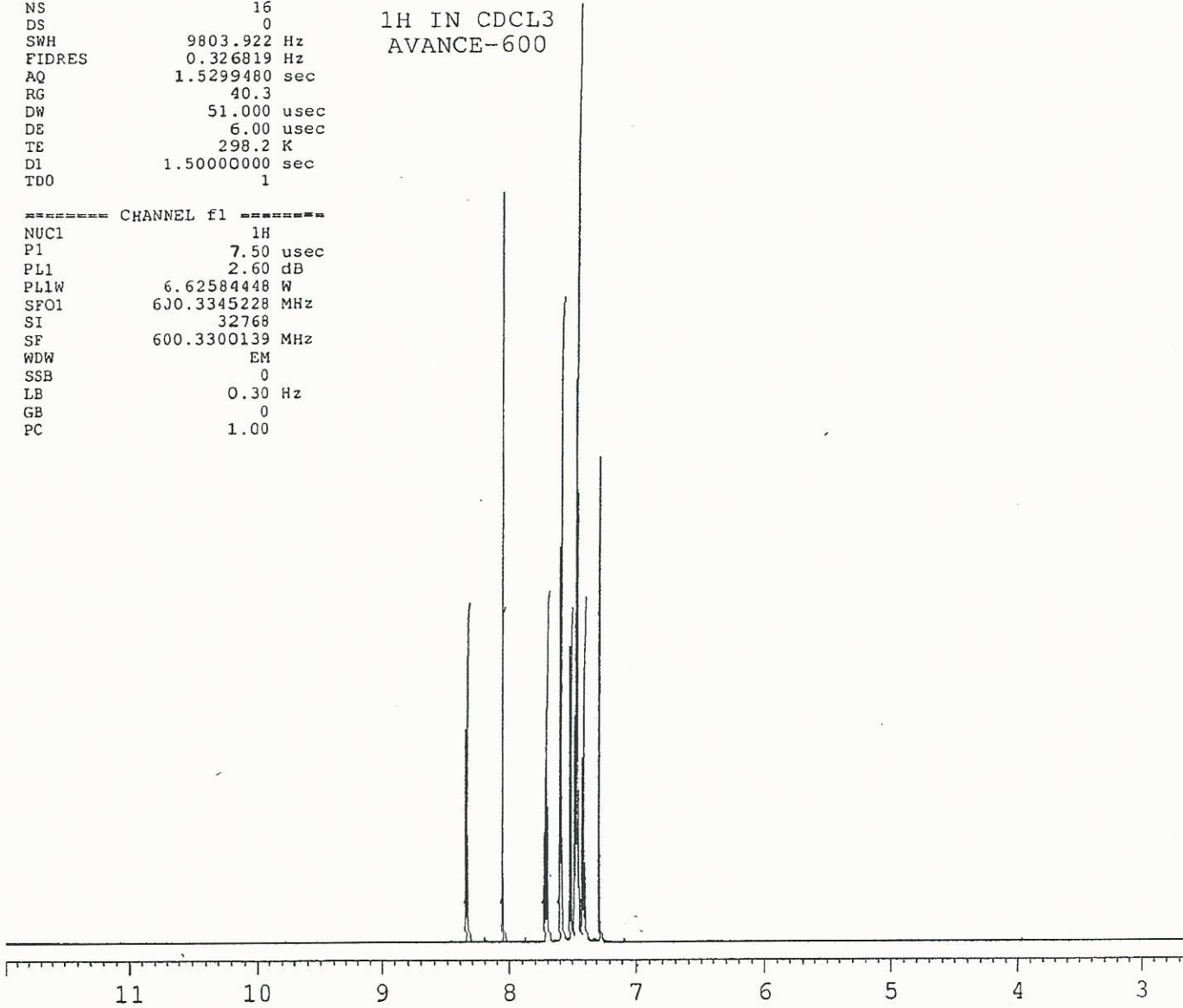
INDOFINE Chemical Company, Inc.
121 STRYKER LANE
BLDG. 30, SUITE 1
HILLSBOROUGH, NJ 08844



SOLVENT CDC13
NS 16
DS 0
SWH 9803.922 Hz
FIDRES 0.326819 Hz
AQ 1.5299480 sec
RG 40.3
DW 51.000 usec
DE 6.00 usec
TE 298.2 K
D1 1.50000000 sec
TDO 1

1H IN CDCL3
AVANCE-600

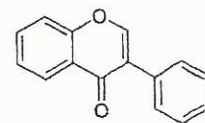
===== CHANNEL f1 =====
NUC1 1H
P1 7.50 usec
PL1 2.60 dB
PL1W 6.62584448 W
SFO1 630.3345228 MHz
SI 32768
SF 600.3300139 MHz
WDW EM
SSB 0
LB 0.30 Hz
GB 0
PC 1.00



1.000
0.987
1.040
2.021
0.985
3.017
1.020



INDOFINE Chemical Company, Inc.
121 STRYKER LANE
BLDG. 30, SUITE 1
HILLSBOROUGH, NJ 08844

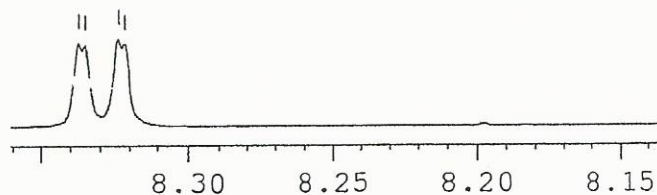


SOLVENT CDCl3
NS 16
DS 0
SWH 9803.922 Hz
FIDRES 0.326819 Hz
AQ 1.5299480 sec
RG 40.3
DW 51.000 usec
DE 6.00 usec
TE 298.2 K
D1 1.50000000 sec
TD0 1

1H IN CDCl3
AVANCE-600

8.337
8.335
8.324
8.322

==== CHANNEL f1 =====
NUC1 1H
P1 7.50 usec
PL1 2.60 dB
PL1W 6.62584448 W
SF01 600.3345228 MHz
F1 32768
SF 600.3300139 MHz
WDW EM
SSB 0
LB 0.30 Hz
GB 0
PC 1.00



7.713
7.710
7.699
7.687
7.684

7.582
7.570

7.506
7.492

7.466
7.455
7.444

