



INDOFINE Chemical Company, Inc.

121 Stryker Lane, Bldg. 30, Suite 1 • Hillsborough, NJ 08844 • U.S.A.

Phone: (908) 359-6778 • FAX: (908) 359-1179

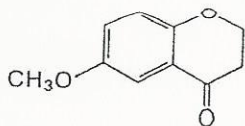
website: www.indofinechemical.com

e-mail: chemical@indofinechemical.com

CERTIFICATE OF ANALYSIS

CAT. No.: 19-532

| | |
|--------------------------|------------------------------------------------|
| <u>Product Name:</u> | 6-METHOXYCHROMANONE |
| <u>Lot Number:</u> | 0405108 |
| <u>CAS No.:</u> | [5802-17-5] |
| <u>Chemical Formula:</u> | C ₁₀ H ₁₀ O ₃ |
| <u>Molecular Weight:</u> | 178.19 |
| <u>Melting Point:</u> | 48-49°C |
| <u>Appearance:</u> | Light yellow powder |
| <u>Solubility:</u> | Soluble in Chloroform |
| <u>TLC:</u> | Hexane:Ethyl acetate (7:3) |
| <u>Purity(HPLC):</u> | 99.69% |
| <u>Storage:</u> | Cool, dry place |





INDOFINE Chemical Company, Inc.

121 Stryker Lane, Bldg. 30, Suite 1 • Hillsborough, NJ 08844 • U.S.A.

Phone: (908) 359-6778 • FAX: (908) 359-1179

website: www.indofinechemical.com

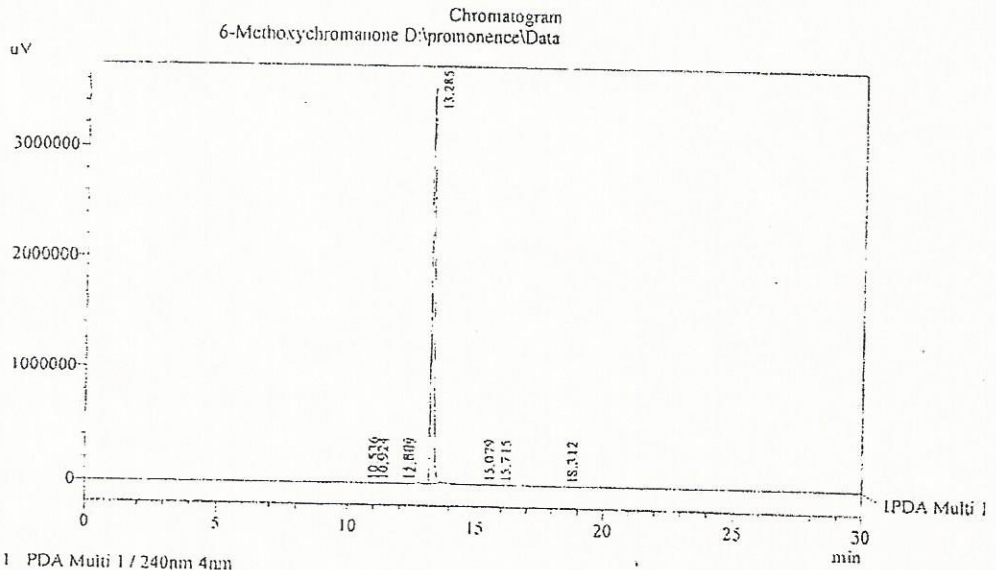
e-mail: chemical@indofinechemical.com

HPLC ANALYSIS

Acquired by : Sanjeev
Sample Name : 6-Methoxychromanone
Sample ID : Lot No:-0405108
Injection Volume : 20 uL
Data Filename : 100312G.Jcd
Method Filename : Linear Gradient.M.1cm

Catalog No.: 19-532
Product name: 6-Methoxychromanone
Lot No.: 0405108

Column : LUNA C-18(2), (250mm x4.6mm 5.0µ)
Flow : 1.000 mL/min.
Mobile Phase : A(0.05% TFA in water) B(Acetonitrile)
0.01 90 10
12.0 10 90
20.0 10 90
25.0 90 10
30.0 90 10



PeakTable

| Peak# | Name | Ret. Time | Area | Area % | Relative Retention Time |
|-------|-----------|-----------|----------|--------|-------------------------|
| 1 | RT:10.536 | 10.536 | 5742 | 0.02 | 0.79 |
| 2 | RT:10.924 | 10.924 | 7777 | 0.03 | 0.82 |
| 3 | RT:11.890 | 11.890 | 31606 | 0.11 | 0.89 |
| 4 | RT:12.005 | 12.005 | 21784 | 0.08 | 0.90 |
| 5 | RT:13.285 | 13.285 | 27425023 | 99.69 | 1.00 |
| 6 | RT:15.079 | 15.079 | 6644 | 0.02 | 1.13 |
| 7 | RT:15.715 | 15.715 | 4781 | 0.02 | 1.18 |
| 8 | RT:18.312 | 18.312 | 7442 | 0.03 | 1.38 |
| Total | | | 27510799 | 100.00 | |



INDOFINE Chemical Company, Inc.

121 Stryker Lane, Bldg. 30, Suite 1 • Hillsborough, NJ 08844 • U.S.A.

Phone: (908) 359-6778 • FAX: (908) 359-1179

website: www.indofinechemical.com

e-mail: chemical@indofinechemical.com

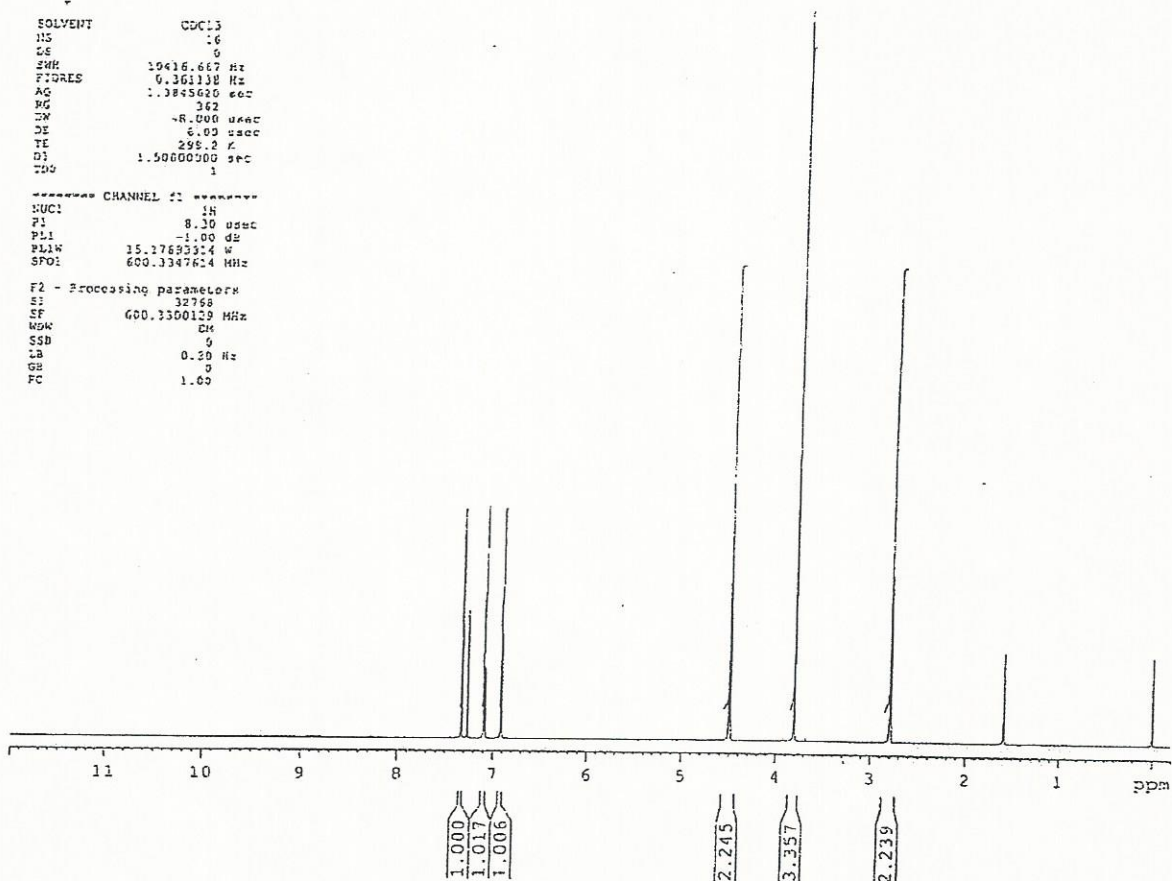
Catalog No.: 19-532
Product name: 6-Methoxychromanone
Lot No.: 0405108

1H IN CDCL3
AVANCE-6001

SOLVENT CDCL3
NS 16
DS 0
SWH 19416.667 Hz
FIDRES 0.361138 Hz
AQ 1.3845620 sec
RG 362
ZM -8.000 usec
DE 6.00 usec
TE 295.2 K
D1 1.50000000 sec
TD0 1

***** CHANNEL f1 *****
NUC1 1H
P1 8.30 usec
PL1 -1.00 dB
PL1W 15.17693314 W
SFO1 600.3347624 MHz

F2 - Processing parameters
SI 32768
SF 600.3300129 MHz
WDW EM
SSB 0
LB 0.20 Hz
GB 0
FC 1.00





INDOFINE Chemical Company, Inc.

121 Stryker Lane, Bldg. 30, Suite 1 • Hillsborough, NJ 08844 • U.S.A.

Phone: (908) 359-6778 • FAX: (908) 359-1179

website: www.indofinechemical.com

e-mail: chemical@indofinechemical.com

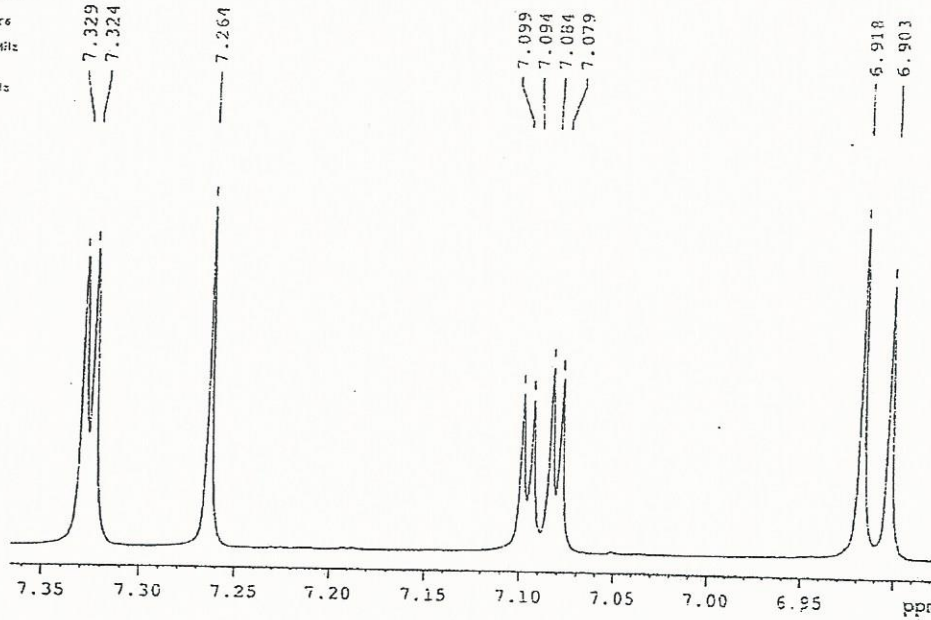
Catalog No.: 19-532
Product name: 6-Methoxychromanone
Lot No.: 0405108

SOLVENT CDCl3
NS 16
DS 0
SWH 10415.667 Hz
FIDRES 0.361138 Hz
AQ 1.3845620 sec
RG 362
DSW 48.000 usec
DE 6.00 usec
TE 298.2 K
DZ 1.5000000 sec
TSD 1

1H IN CDCl3
AVANCE-600i

----- CHANNEL f1 -----
NUC1 1H
P1 9.30 usec
PL1 -1.00 dB
PL1X 15.17893314 W
RF01 600.3147614 MHz

F2 - Processing parameters
SI 32768
RF 600.3100125 MHz
WDW EM
SSB 0
LP 0.30 Hz
GB 0
PC 1.00





INDOFINE Chemical Company, Inc.

121 Stryker Lane, Bldg. 30, Suite 1 • Hillsborough, NJ 08844 • U.S.A.

Phone: (908) 359-6778 • FAX: (908) 359-1179

website: www.indofinechemical.com

e-mail: chemical@indofinechemical.com

Catalog No.: 19-532
Product name: 6-Methoxychromanone
Lot No.: 0405108

SOLVENT CDCL3
NS 16
DS 0
SWH 16411.647 Hz
FIDRES 0.361135 Hz
AQ 1.3245620 sec
RG 322
DR 48.000 usec
DE 1.00 usec
TE 298.2 K
D1 1.50000000 sec
TD0 1

1H IN CDCL3
AVANCE-6001

----- CHANNEL f1 -----
NUC1 1H
P1 8.30 usec
PL1 -1.00 dB
PL1W 15.17893334 W
SFO1 600.3347614 MHz

F2 - processing parameters
S1 32768
GF 600.3300129 MHz
WDW EM
SSB 0
LB 0.30 Hz
GB 0
PC 1.00

