



INDOFINE Chemical Company, Inc.

121 Stryker Lane, Bldg. 30, Suite 1 • Hillsborough, NJ 08844 • U.S.A.

Phone: (908) 359-6778 • FAX: (908) 359-1179

website: www.indofinechemical.com

e-mail: chemical@indofinechemical.com

CERTIFICATE OF ANALYSIS

Catalog Number: 17-077

Product Name: **CHROMONE**

CAS Number: [491-38-3]

Lot Number: 99131

Chemical Formula: C₉H₆O₂

Molecular Weight: 146.15

Melting Point: 55-58°C

Appearance: Cream color crystalline powder

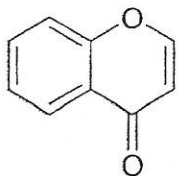
Solubility: Soluble in Chloroform

TLC: Hexane : Ethyl acetate (7:3)

NMR Spectrum: Enclosed (Confirms to the structure)

Storage: Store in a cool, dry place

Purity (HPLC): 99.40%





INDOFINE Chemical Company, Inc.

121 Stryker Lane, Bldg. 30, Suite 1 • Hillsborough, NJ 08844 • U.S.A.

Phone: (908) 359-6778 • FAX: (908) 359-1179

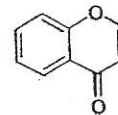
website: www.indofinechemical.com

e-mail: chemical@indofinechemical.com

HPLC ANALYSIS

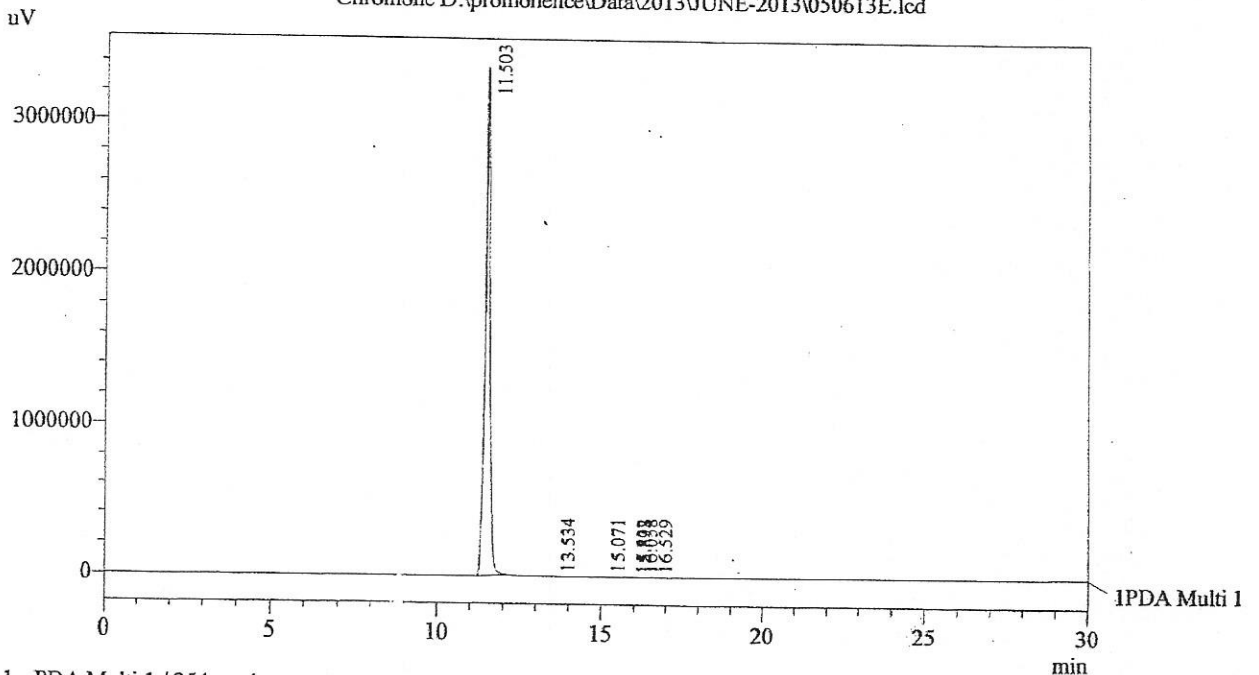
Acquired by : Sanjeev
 Sample Name : Chromone
 Sample ID : Lot No: 99131
 Injection Volume : 20 μ L
 Data Filename : 050613E.lcd
 Method Filename : Linear Gradient.M.lcm

Catalog No.: 17-077
 Product name: Chromone
 Lot No.: 99131



Column : LUNA C-18(2). (250mm x4.6mm 5.0 μ)
 Flow : 1.000 mL/min.
 Mobile Phase : A(0.05% TFA in water) B(Acetonitrile)
 0.01 90 10
 12.0 10 90
 20.0 10 90
 23.0 90 10
 30.0 90 10
 Diluent : Acetonitrile

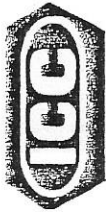
Chromatogram
 Chromone D:\promonence\Data\2013\JUNE-2013\050613E.lcd



1 PDA Multi 1 / 254nm 4nm

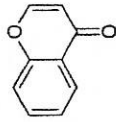
PeakTable

Peak#	Name	Ret. Time	Area	Area %	Relative Retention Time
1	Chromone	11.503	33407493	99.40	1.00
2	RT:13.534	13.534	15235	0.05	1.18
3	RT:15.071	15.071	96950	0.29	1.31
4	RT:15.832	15.832	12152	0.04	1.38
5	RT:15.898	15.898	13336	0.04	1.38
6	RT:16.058	16.058	23921	0.07	1.40
7	RT:16.529	16.529	38517	0.11	1.44
Total			33607604	100.00	



INDOFINE Chemical Company, Inc.
 121 STRYKER LANE
 BLDG. 30, SUITE 1
 HILLSBOROUGH, NJ 08844

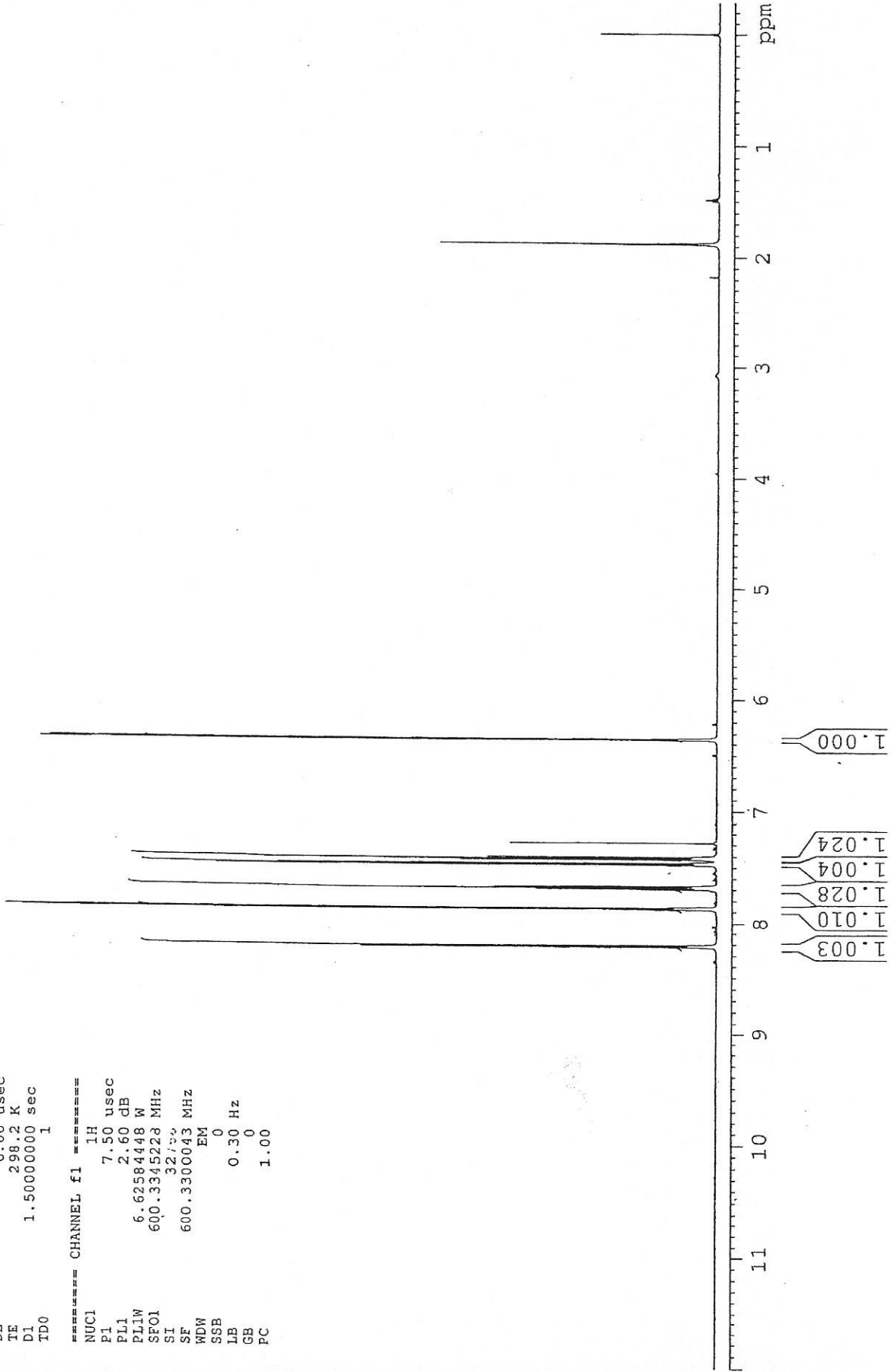
Catalog No.: 17-077
 Product name: Chromone
 Lot No.: 99131



1H IN CDCL3
 AVANCE-600

SOLVENT CDC13
 NS 16
 DS 0
 SWH 9803.922 Hz
 FIDRES 0.326819 Hz
 AQ 1.5299480 sec
 RG 22.6
 DW 51.000 usec
 DE 6.00 usec
 TE 298.2 K
 D1 1.50000000 sec
 TD0 1

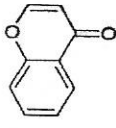
===== CHANNEL f1 =====
 NUC1 1H
 P1 7.50 usec
 PL1 2.60 dB
 PLLW 6.62584448 W
 SFOL 600.3345228 MHz
 SI 327.3
 SF 600.3300043 MHz
 WDW EM
 SSB 0
 LB 0.30 Hz
 GB 0
 PC 1.00





INDOFINE Chemical Company, Inc.
 121 STRYKER LANE
 BLDG. 30, SUITE 1
 HILLSBOROUGH, NJ 08844

Catalog No.: 17-077
 Product name: Chromone
 Lot No.: 99131

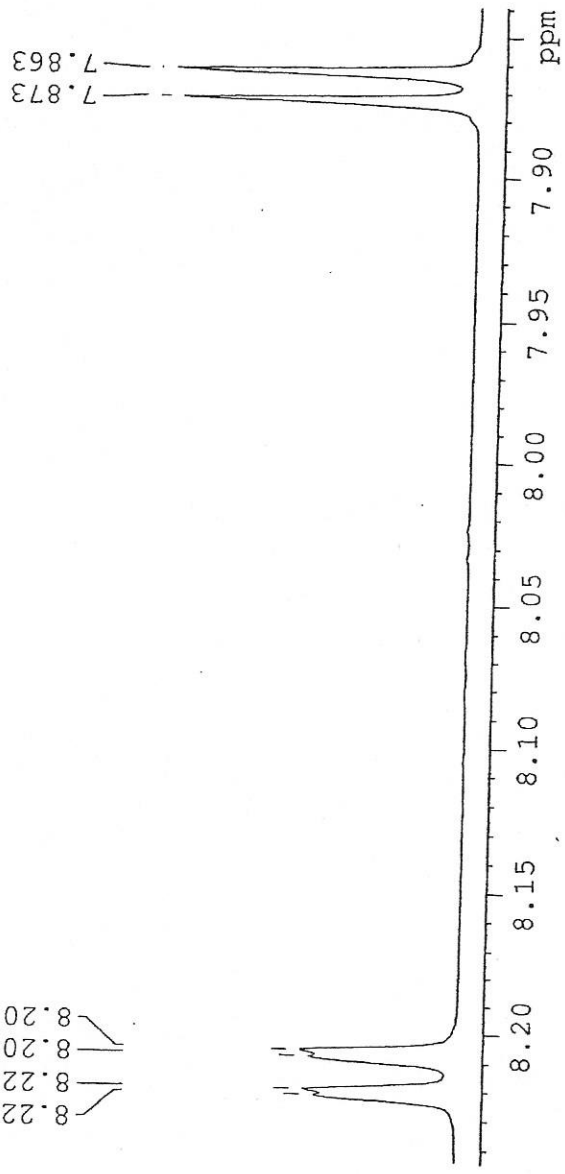


SOLVENT CDC13
 NS 16
 DS 0
 SWH 9803.922 Hz
 FIDRES 0.326819 Hz
 AQ 1.5299480 sec
 RG 22.6
 DW 51.000 usec
 DE 6.00 usec
 TE 298.2 K
 D1 1.50000000 sec
 TD0 1

1H IN CDCL3
 AVANCE-600

CHANNEL f1
 NUC1 1H
 P1 7.50 usec
 PL1 2.60 dB
 PL1W 6.62584448 W
 SF01 600.3345228 MHz
 SI 32768
 SF 600.3300043 MHz
 WDW EM
 SSB 0
 LB 0.30 Hz
 GB 0
 PC 1.00

∞ : 222
 ∞ : 220
 ∞ : 209
 ∞ : 207



7.695
7.693
7.681
7.669
7.667

7.473
7.459
7.427
7.415
7.402

