



# INDOFINE Chemical Company, Inc.

121 Stryker Lane, Bldg. 30, Suite 1 • Hillsborough, NJ 08844 • U.S.A.

Phone: (908) 359-6778 • FAX: (908) 359-1179

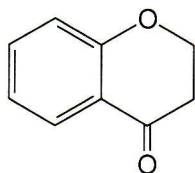
website: [www.indofinechemical.com](http://www.indofinechemical.com)

e-mail: [chemical@indofinechemical.com](mailto:chemical@indofinechemical.com)

## CERTIFICATE OF ANALYSIS

CAT. No.: 17-076

<u>Product Name:</u>	<b>4-CHROMANONE</b>
<u>CAS Number:</u>	[491-37-2]
<u>Lot Number:</u>	0806038
<u>Chemical Formula:</u>	C <sub>9</sub> H <sub>8</sub> O <sub>2</sub>
<u>Molecular Weight:</u>	148.16
<u>Melting Point:</u>	38-40°C
<u>Appearance:</u>	Cream color crystalline low melting solid
<u>Solubility:</u>	Soluble in Chloroform
<u>Purity(HPLC):</u>	99.23%



# ICG INDOFINE Chemical Company, Inc.

121 Stryker Lane, Bldg. 30, Suite 1 • Hillsborough, NJ 08844 • U.S.A.

Phone: (908) 359-6778 • FAX: (908) 359-1179

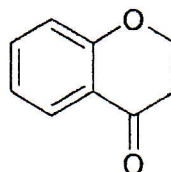
website: [www.indofinechemical.com](http://www.indofinechemical.com)

e-mail: [chemical@indofinechemical.com](mailto:chemical@indofinechemical.com)

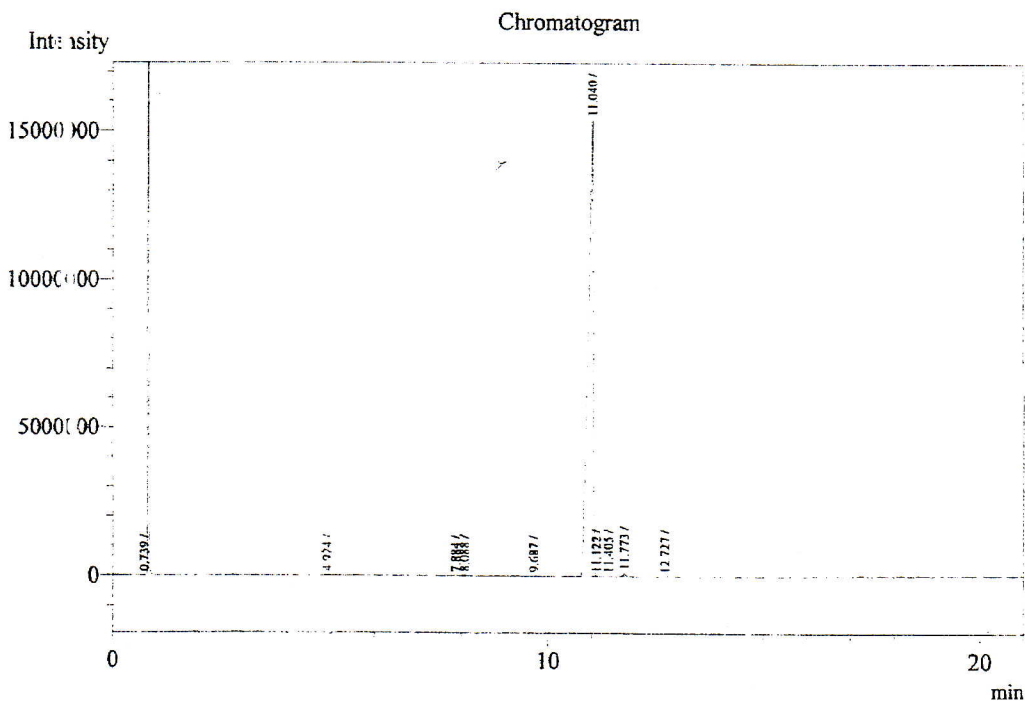
Catalog No.: 17-076  
Product: 4-Chromanone  
Lot No.: 0806038

Analysis Date & Time : 6/21/2008 11:38:46 AM  
User Name : Ramana  
Sample Name : 4-Chromanone  
Sample ID :  
Method Name : D:\Methods\BRC Method.gcm  
Data File Name : D:\2008\Jun-2008\210608D.gcd

Description :  
Column : ZB-5  
Column Temp : 80(2) - 10 - 250(2)°C  
Inj Temp : 250°C  
Det Temp : 300°C



4-Chromanone



Peak Table - Channel 1

Peak#	Ret. Time	Area	Height	Area%
1	0.739	24174	17787	0.0195
2	4.924	131414	18105	0.1061
3	7.884	35192	4336	0.0284
4	8.088	94411	19310	0.0762
5	9.687	42063	9338	0.0339
6	11.040	123071992	15386127	99.3222
7	11.122	53270	8474	0.0430
8	11.405	22649	3162	0.0183
9	11.773	404127	104814	0.3261
10	12.727	32614	7390	0.0263
Total		123911906	15578843	100.0000



# INDOFINE Chemical Company, Inc.

121 Stryker Lane, Bldg. 30, Suite 1 • Hillsborough, NJ 08844 • U.S.A.

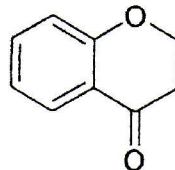
Phone: (908) 359-6778 • FAX: (908) 359-1179

website: [www.indofinechemical.com](http://www.indofinechemical.com)

e-mail: [chemical@indofinechemical.com](mailto:chemical@indofinechemical.com)

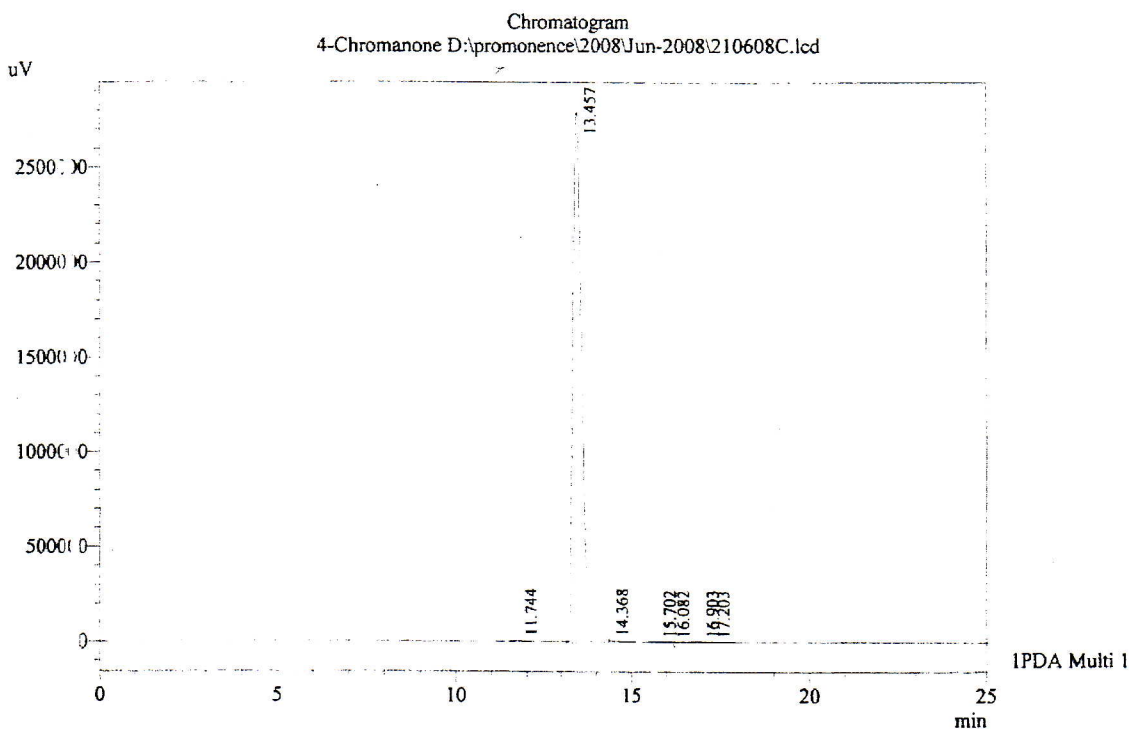
Catalog No.: 17-076  
Product: 4-Chromanone  
Lot No.: 0806038

Date Acquired : 6/21/2008 12:44:09 PM  
Acquired by : Ramana  
Sample Name : 4-Chromanone  
Sample ID :  
Injection Volume : 20 uL  
Data filename : 210608C.lcd  
Method filename : Linear Gradient.M.lcm



4-Chromanone

Description:  
Column : Inertsil C-18, 250X4.6mm 5.0µm  
Flow : 1.000mL/min.  
Mobile Phase : A(Water 0.05%) : B(ACN)  
00.00 : 90 : 10  
12.00 : 10 : 90  
20.00 : 10 : 90  
23.00 : 90 : 10



1 IPDA Multi 1 / 254nm 4nm

PeakTable

PDA Ch1 254nm 4nm

Peak#	Ret. Time	Area	Height	Area %
1	11.744	35042	8447	0.271
2	13.457	49455622	2790984	99.230
3	14.368	162456	10028	0.326
4	15.702	27413	2127	0.055
5	16.082	9873	770	0.020
6	16.903	26206	1402	0.053
7	17.203	22676	1199	0.045
Total		49839288	2814957	100.000