



INDOFINE Chemical Company, Inc.

121 Stryker Lane, Bldg. 30, Suite 1 • Hillsborough, NJ 08844 • U.S.A.

Phone: (908) 359-6778 • FAX: (908) 359-1179

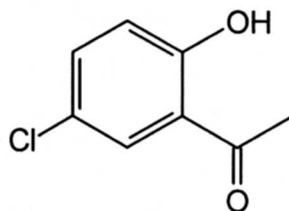
website: www.indofinechemical.com

e-mail: chemical@indofinechemical.com

CERTIFICATE OF ANALYSIS

Cat. No.: **17-053**

<u>Product:</u>	5'-CHLORO-2'-HYDROXYACETOPHENONE
<u>CAS Number:</u>	[1450-74-4]
<u>Lot No.:</u>	0602004
<u>Molecular Formula:</u>	C ₈ H ₇ ClO ₂
<u>Molecular Weight:</u>	170.60
<u>Melting Point:</u>	52.8-54 °C
<u>Appearance:</u>	White crystalline powder
<u>Solubility:</u>	Soluble in Chloroform
<u>Purity (HPLC):</u>	99+%





INDOFINE Chemical Company, Inc.

121 Stryker Lane, Bldg. 30, Suite 1 • Hillsborough, NJ 08844 • U.S.A.

Phone: (908) 359-6778 • FAX: (908) 359-1179

website: www.indofinechemical.com

e-mail: chemical@indofinechemical.com

HPLC ANALYSIS

Catalog No.: 17-053

Product name: 5'-Chloro-2'-hydroxyacetophenone

Lot No.: 0602004

Sample Info:

Sample ID : NP-028

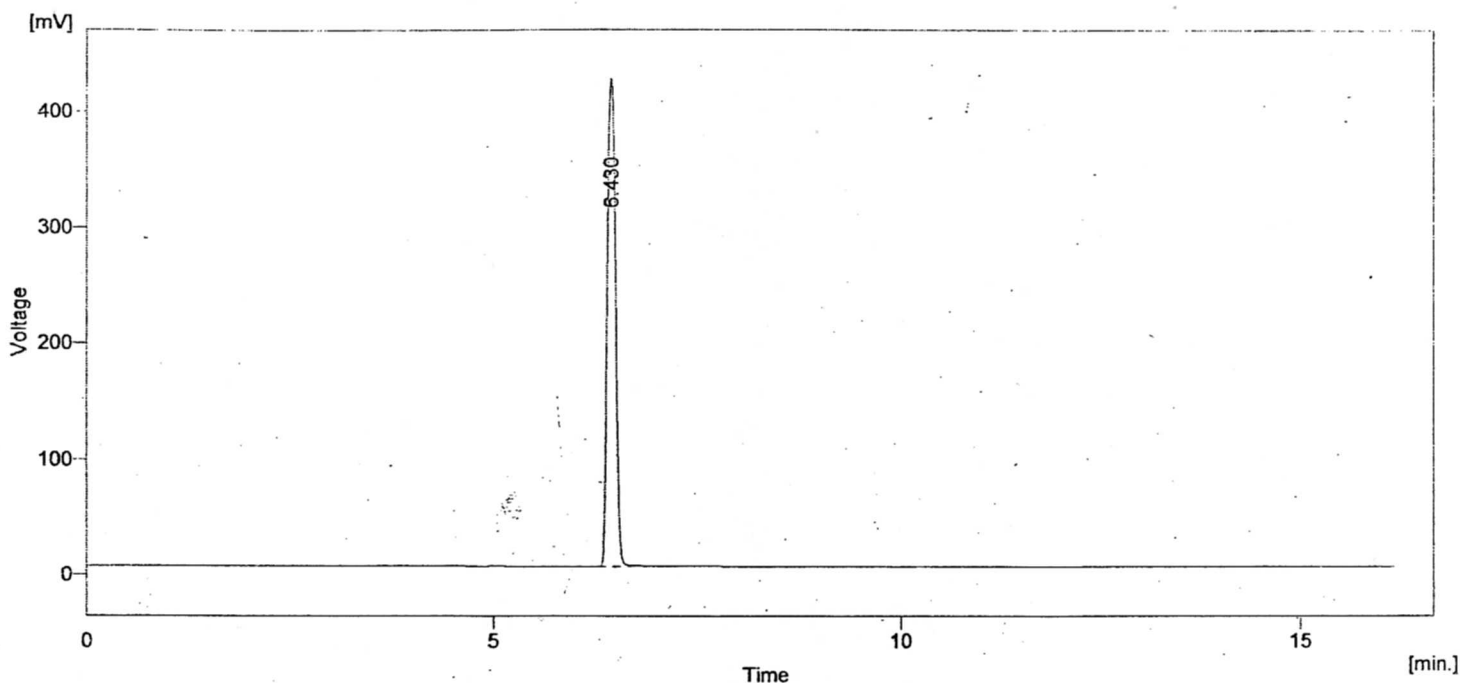
Sample : 5-CHLORO-2-HYDROXY ACETOPHENONE

Inj. Volume [ml] : 20

Amount : 0

ISTD Amount : 0

Dilution : 1



Result Table (Uncal - F:\ProminenceWP-0281)

	Reten. Time [min]	Area [mV.s]	Height [mV]	Area [%]
1	6.430	2943.276	421.447	100.0
	Total	2943.276	421.447	100.0

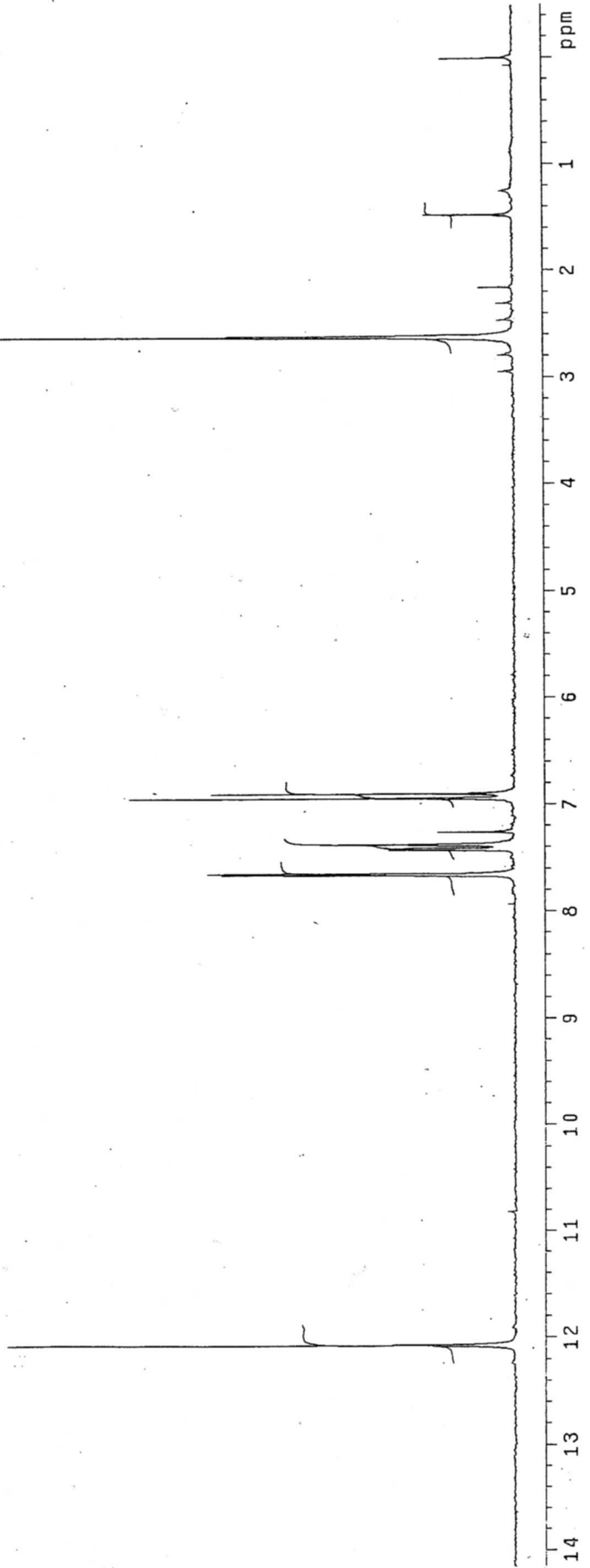
MOBILE PHASE : METHANOL + WATER (80+20ml)

WAVE LENGTH : 254nm , COLUMN : C₁₈ (250X4.6mm), FLOW RATE : 1.0ml/min



INDOFINE Chemical Company, Inc.
121 STRYKER LANE
BLDG. 30, SUITE 1
HILLSBOROUGH, NJ 08844

Catalog No.: 17-053
Product name: 5'-Chloro-2'-hydroxyacetophenone
Lot No.: 0602004

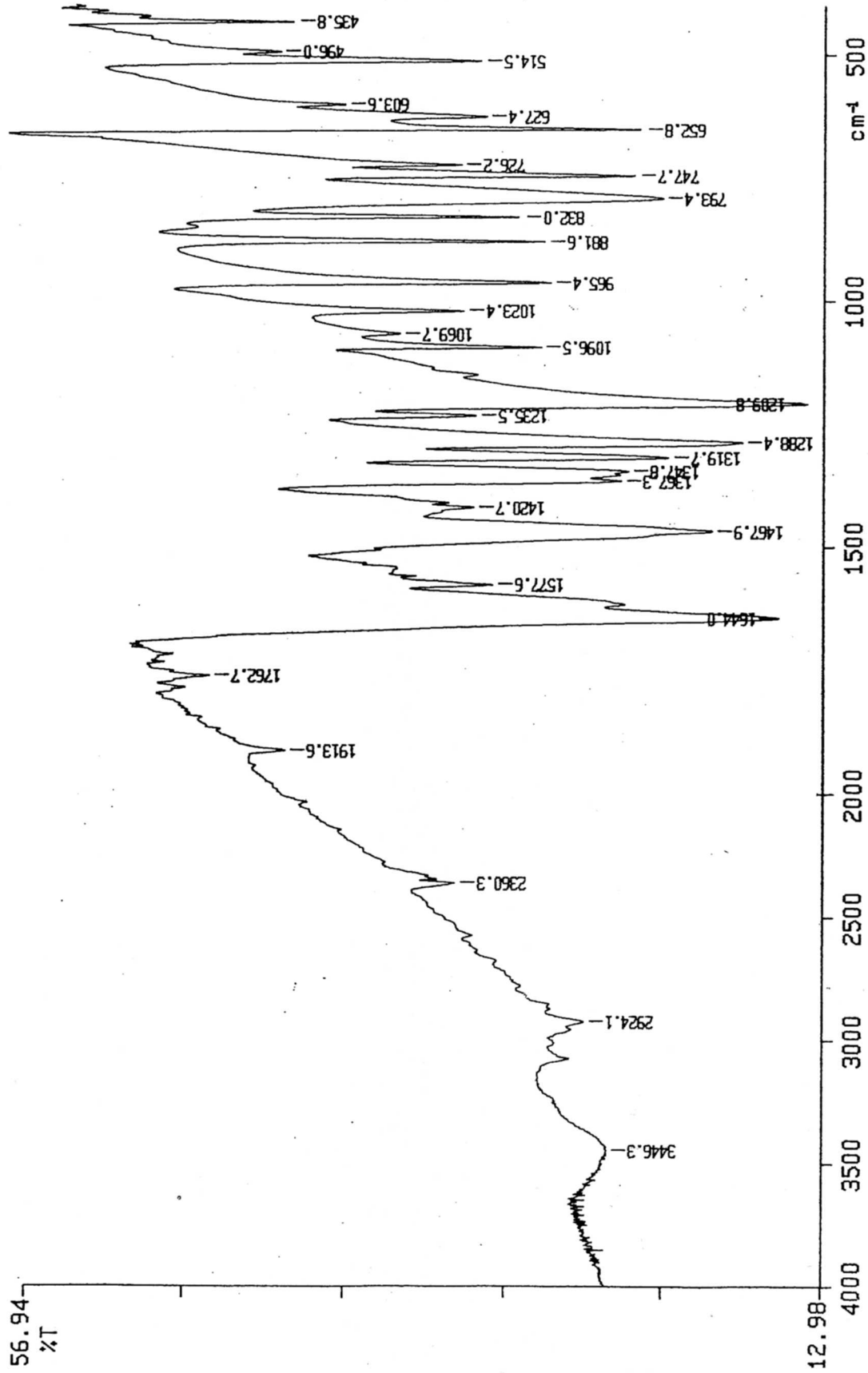




INDOFINE Chemical Company, Inc.
121 STRYKER LANE
BLDG. 30, SUITE 1
HILLSBOROUGH, NJ 08844

Catalog No.: 17-053
Product name: 5'-Chloro-2'-hydroxyacetophenone
Lot No.: 0602004

PERKIN ELMER



06/01/21 13:50

X: 1 scan, 4.0cm⁻¹

5-CLORO-2-HYDROXY ACETOPHENONE