



INDOFINE Chemical Company, Inc.

121 Stryker Lane, Bldg. 30, Suite 1 • Hillsborough, NJ 08844 • U.S.A.

Phone: (908) 359-6778 • FAX: (908) 359-1179

website: www.indofinechemical.com

e-mail: chemical@indofinechemical.com

CERTIFICATE OF ANALYSIS

Cat No.: 025395S

<u>Product:</u>	(+)-LONGIFOLENE
<u>CAS Number:</u>	[475-20-7]
<u>Lot Number:</u>	4943H
<u>Chemical Formula:</u>	C ₁₅ H ₂₄
<u>Molecular Weight:</u>	204.36
<u>Appearance:</u>	Clear, colorless liquid
<u>Optical rotation:</u>	+22.9°
<u>Specific gravity:</u>	0.936
<u>Storage:</u>	+2-8°C
<u>Purity(GC):</u>	90.01%



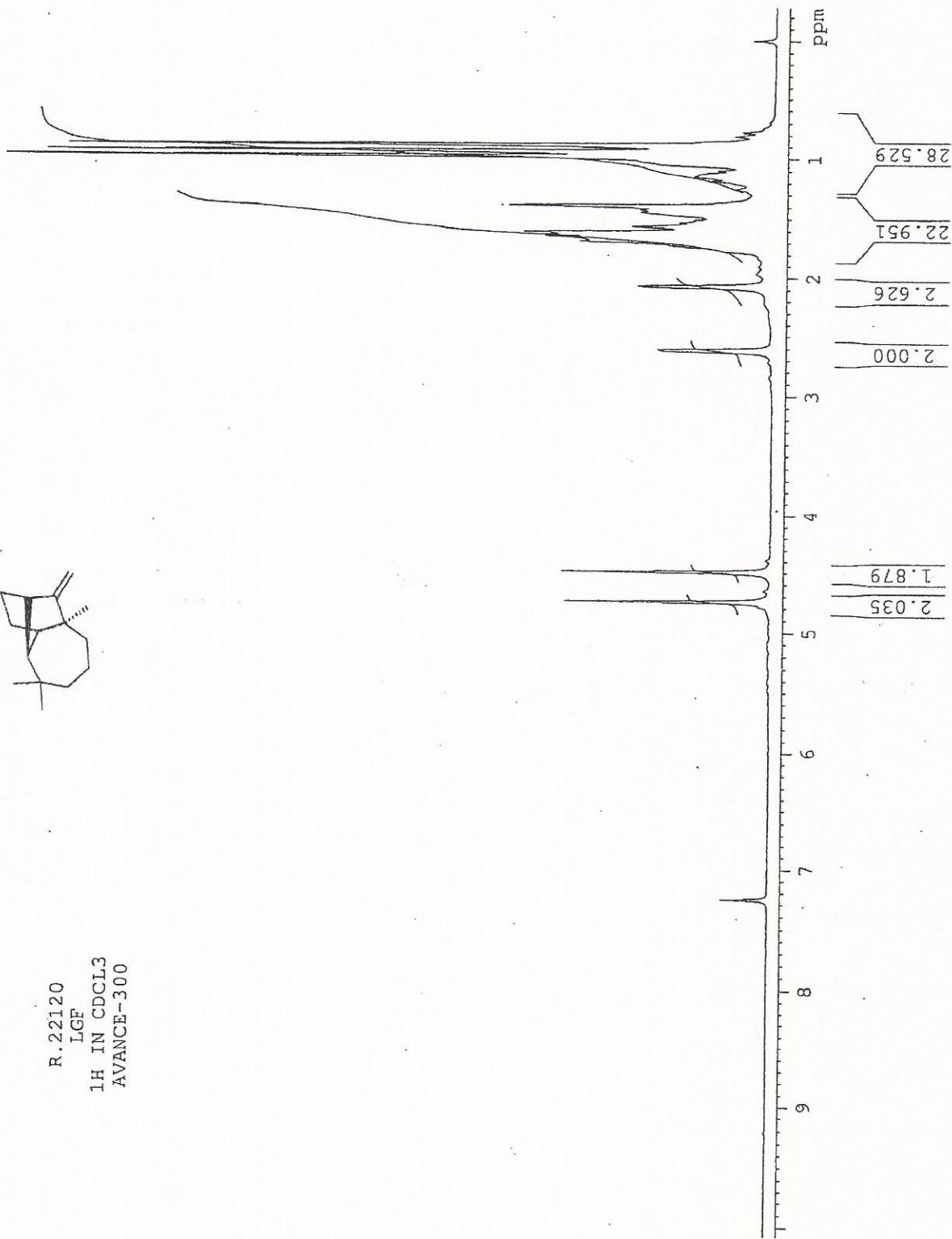


INDOFINE Chemical Company, Inc.
121 STRYKER LANE
BLDG. 30, SUITE 1
HILLSBOROUGH, NJ 08844

Catalog No.: 025395S
Product name: (+)-Longifolene
Lot No.: 4943H



R.22120
LGF
1H IN CDCL3
AVANCE-300





INDOFINE Chemical Company, Inc.

121 Stryker Lane, Bldg. 30, Suite 1 • Hillsborough, NJ 08844 • U.S.A.

Phone: (908) 359-6778 • FAX: (908) 359-1179

website: www.indofinechemical.com

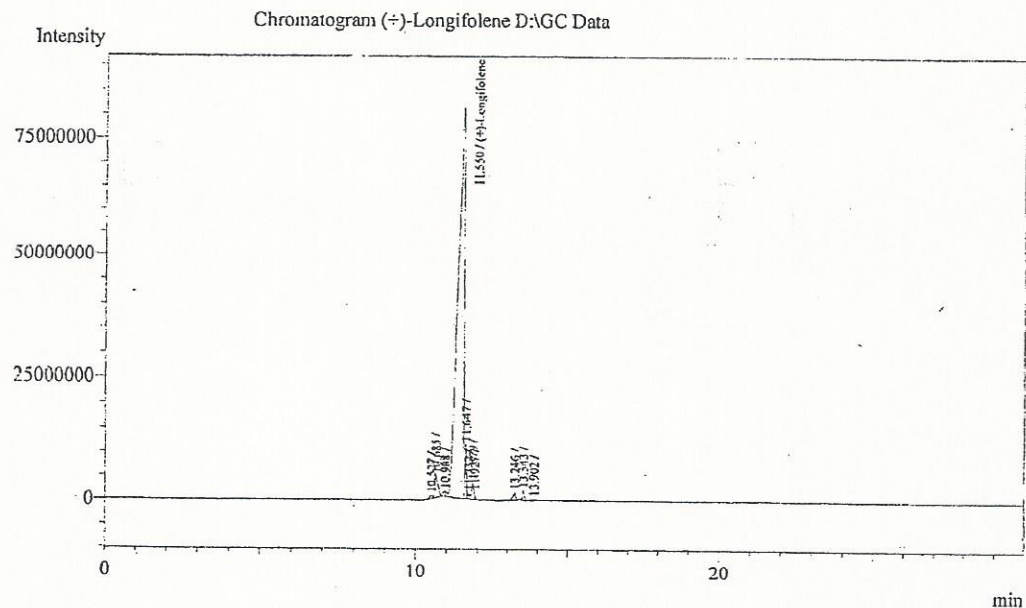
e-mail: chemical@indofinechemical.com

GC ANALYSIS

User Name : Sanjeev
 Sample Name : (+)-Longifolene
 Sample ID : Lot No:-4943H
 Method Name : D:\Methods
 Data File Name : D:\GC Data\2012\MAY-2012\260412066.gcd

Catalog No.: 025395S
 Product name: (+)-Longifolene
 Lot No.: 4943H

Description
 Injector - 250°C
 Detector - 300°C
 Column temp - 80-10-280(10)



Peak Table - Channel 1

Peak#	Ret. Time	Area	Height	Area%	Name
1	10.527	4302581	616637	0.3518	
2	10.685	34180311	4399350	2.7950	
3	10.961	5178740	1063652	0.4235	
4	10.988	4560642	972187	0.3729	
5	11.550	1100857990	81317790	90.0196	(+)-Longifolene
6	11.647	34239532	11372830	2.7998	
7	11.732	3848532	1120758	0.3147	
8	11.879	17038242	3446103	1.3933	
9	11.927	2004060	1292564	0.1639	
10	13.246	8349170	1508012	0.6827	
11	13.543	7698107	1866906	0.6295	
12	13.902	650666	194527	0.0532	
Total		1222908573	109171316	100.0000	