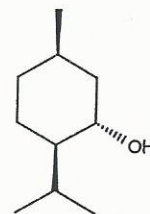




# INDOFINE Chemical Company, Inc.

121 Stryker Lane, Bldg. 30  
Hillsborough, NJ 08844 USA  
Phone: (908) 359-6778; Fax: (908) 359-1179



## Certificate Of Analysis

**025165S****(+)-ISOMENTHOL****Lot No.: 17101114**

### IDENTIFICATION

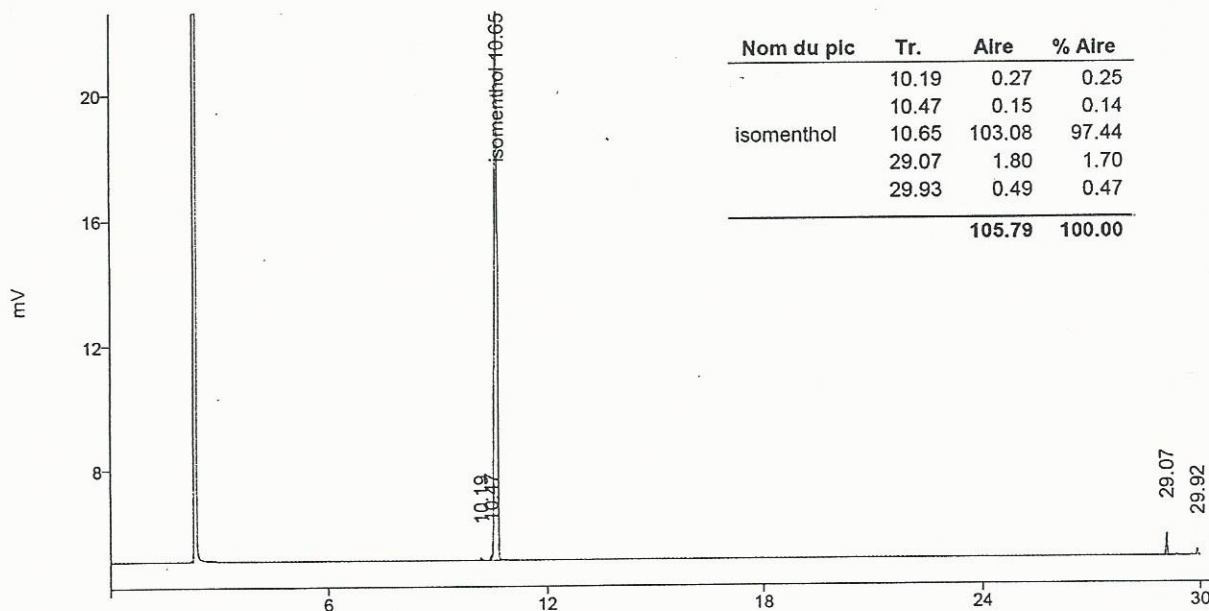
|                   |                                   |
|-------------------|-----------------------------------|
| CAS Number        | [23283-97-8]                      |
| Molecular formula | C <sub>10</sub> H <sub>20</sub> O |
| Molecular weight  | 156.27                            |

### ANALYSIS

| TEST             | SPECIFICATION (june 2016, version 10) | RESULT                |
|------------------|---------------------------------------|-----------------------|
| Appearance       | White to beige coloured solid         | White solid           |
| [α] <sub>D</sub> | —                                     | +24° c=0.1 in ethanol |
| Moisture         | —                                     | < 0.2%                |
| Assay (GC)       | ≥90% (sum of enantiomers)             | Conform               |

### GC

Column DB5 capillary 30m x 0.25 mm x 0.25 μm  
Temperature Column 70 to 220°C (5°C/min)  
Injector 200°C, Detector 230°C  
Detector FID  
Carrier gas Helium 1 ml/min  
Sample solvent Isopropanol



The values given on the 'Certificate of Analysis' are the results determined at the time of analysis

Storage

Store at +2/8°C. Place in a desiccator under vacuum before use.