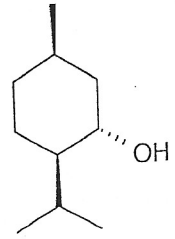




INDOFINE Chemical Company, Inc.

121 Stryker Lane, Bldg. 30
Hillsborough, NJ 08844 USA
Phone: (908) 359-6778; Fax: (908) 359-1179



Certificate Of Analysis

025165S

(+)-ISOMENTHOL

LotNo.: 13041010

IDENTIFICATION

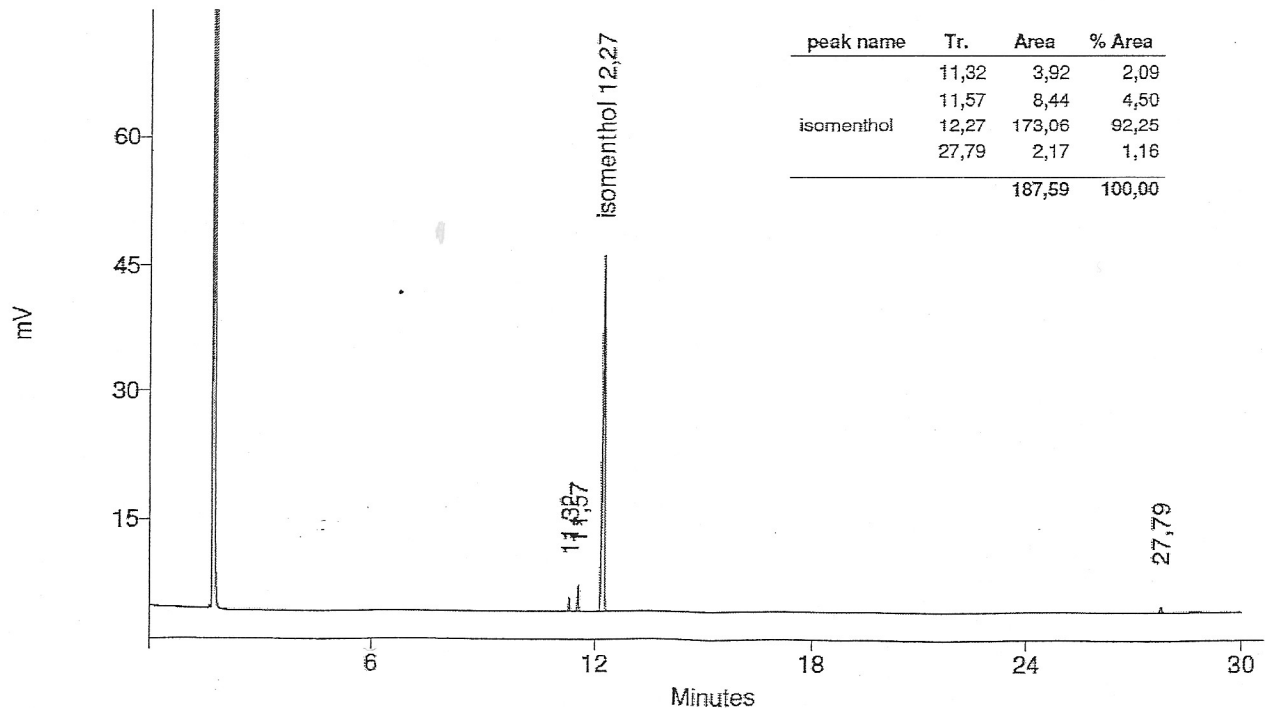
CAS Number	[23283-97-8]
Molecular formula	C ₁₀ H ₂₀ O
Molecular weight	156.27

ANALYSIS

TEST	SPECIFICATION (October 2009, version 02)	RESULT
Appearance	White powder	White powder
Assay (GC)	≥90% (sum of enantiomers)	Conform

GC

Column	Carbowax capillary 30m x 0.32 mm x 0.25 μm
Temperature	Column 70 to 220°C (5°C/min), Injector 200°C, Detector 230°C
Detector	FID
Carrier gas	Hydrogen 6 psi
Sample solvent	Isopropanol



Date of last QC-recheck: October 2012
Date of retest: October 2016

The values given on the 'Certificate of Analysis' are the results determined at the time of analysis

Storage

Store at +2/8°C. Place in a desiccator under vacuum before use.