



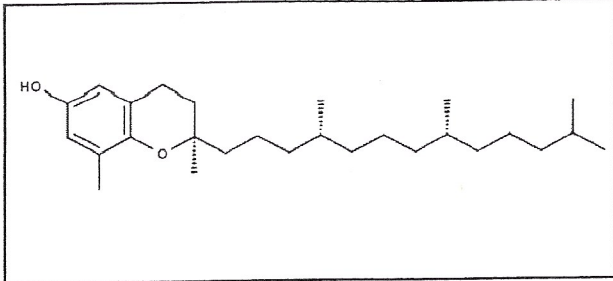
INDOFINE Chemical Company, Inc.

121 Stryker Lane, Bldg. 30
Hillsborough, NJ 08844 USA
Phone: (908) 359-6778; Fax: (908) 359-1179

Certificate Of Analysis

022963S **(+)-delta-TOCOPHEROL** **Lot No.: 21110702**

CAS RN	119-13-1
MOL FORMULA	C ₂₇ H ₄₆ O ₂
MOL WEIGHT	402,66



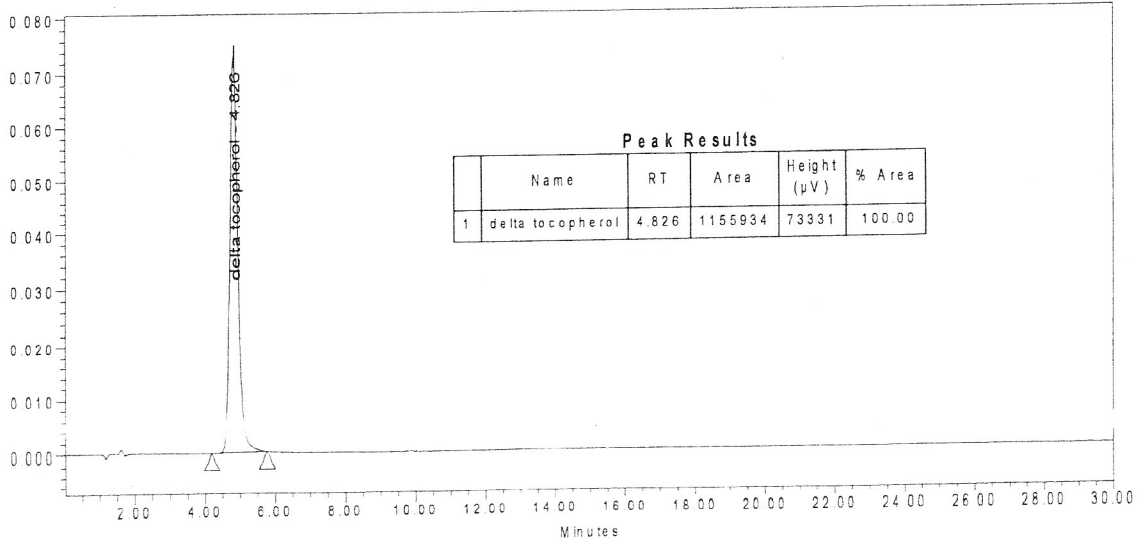
TEST	METHOD	UNIT	SPECIFICATION	RESULT
Appearance	Visual		Oil	Conform
Water content	KF	% w/w		0,7
Residual solvents	GC-HS	% w/w		0,9
Inorganics	ICP-MS	% w/w		< 0,1
Purity	HPLC	% area	≥ 98,0	100,0
Assay	Calculated (*)	% w/w		99,4

(*) Assay = Purity by HPLC x (100 - %water - %solvents - %inorganics)

CHROMATOGRAPHIC PURITY / HPLC

Column : Cosmosil Pye - 2x100mm - 5µm
 Mobile phase : Water + 1% HCOOH/Methanol 7/93
 Detection : UV 290 nm

Temperature : 30°C
 Flow rate : 0,2 ml/min
 Injection volume : 2 µl
 Injection solvent : MeOH



LONG TERM STORAGE : Below -15°C in a dry and dark place
 Prepared by:
Ramesh Mandadi
 Ramesh Mandadi
 Director of Operations

TRANSPORT CONDITIONS : Ambient temperature
 Reviewed and Approved by:
Sujata Moton
 Sujata Moton
 VP