



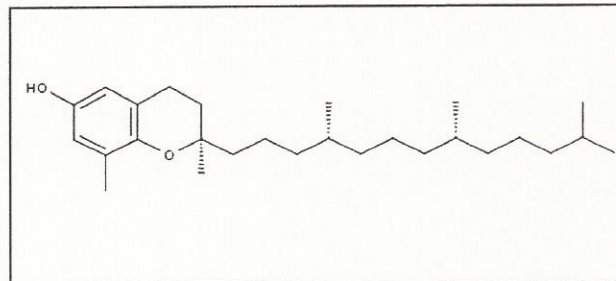
INDOFINE Chemical Company, Inc.

121 Stryker Lane, Bldg. 30
Hillsborough, NJ 08844 USA
Phone: (908) 359-6778; Fax: (908) 359-1179

Certificate Of Analysis

022963S**(+)-delta-TOCOPHEROL****Lot No.: 18062101**

CAS RN	119-13-1
MOL FORMULA	C ₂₇ H ₄₆ O ₂
MOL WEIGHT	402,66



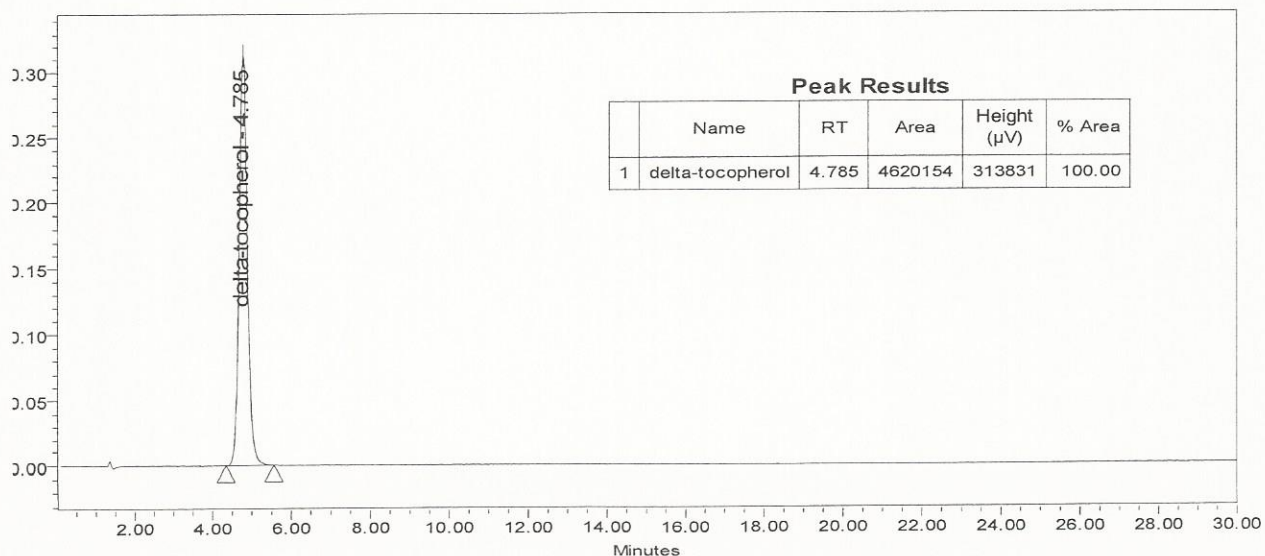
TEST	METHOD	UNIT	SPECIFICATION	RESULT
Appearance	Visual		Oil	Conform
Chirality	Optical rotation	°	[α] _D c=5 in DCM, 20°C	+5,1
Water content	KF	% w/w		0,4
Residual solvents	GC-HS	% w/w		0,7
Inorganics	ICP-MS	% w/w		<0,1
Purity	HPLC	% area	≥ 98,0	100
Assay	Calculated (*)	% w/w		98,9

(*) Assay = Purity by HPLC x (100 - %water - %solvents - %inorganics)

CHROMATOGRAPHIC PURITY / HPLC

Column : Cosmosil Pye - 2x100mm - 5µm
Mobile phase : Water + 1% HCOOH/Methanol 5/95
Detection : UV 290 nm

Temperature : 30°C
Flow rate : 0,2 ml/min
Injection volume : 2 µl
Injection solvent : MeOH



LONG TERM STORAGE : Below -15°C in a dry and dark place

TRANSPORT CONDITIONS : Ambient temperature