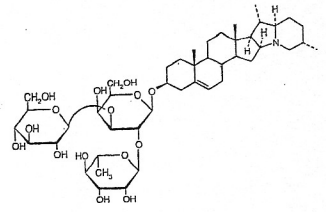


**INDOFINE Chemical Company, Inc.**

121 Stryker Lane, Building 30
 Hillsborough, NJ 08844 USA
 Phone: (908) 359-6778; Fax: (908) 359-1179



HPLC Lot No.: 11071105

alpha-SOLANINE 021652S

IDENTIFICATION

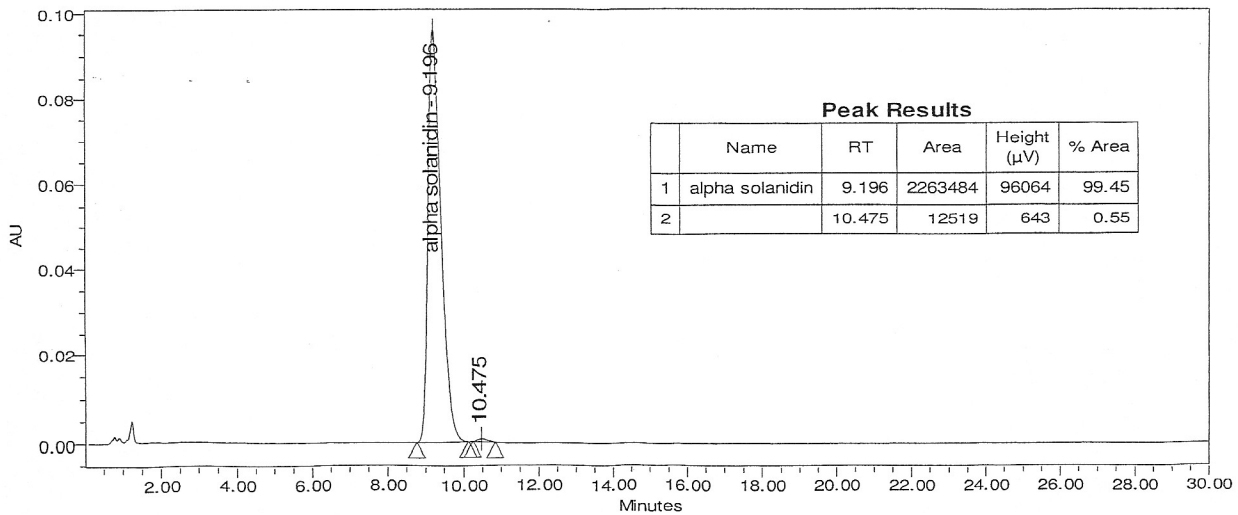
CAS number [20562-02-1]
 Synonym name Solatunine
 Chemical family Alkaloids
 Molecular formula C₄₅H₇₃NO₁₅
 Molecular weight 868.08

CERTIFICATE OF ANALYSIS

Appearance White powder
 Moisture 5.3%
 Residual solvent 0.8%
 Thin layer chromatography support Silicagel
 solvent Methylene chloride /methanol/NH₄OH 2% aq (55/45/5 ,V/V/V)
 detection p-Anisaldehyde/acetic acid/sulfuric acid (1/40/1:V/V/V)
 then heating 10 mn at 110°C Draggendorf
 N content 1.57 % N
 Storage **TOXIC** . Store in a dry and dark place.
 Place in a desiccator under vacuum for 48hours before use

HIGH PERFORMANCE LIQUID CHROMATOGRAPHY

Column Nova pak C18® (3.9 x 150 mm), particle size 4 µm
 Solvent Tampon 0.1M monobasic ammonium phosphate pH3.5 / Acetonitrile (75/25 ,V/V)
 Flow rate 1 ml/min
 Detector UV visible 200 nm
 Sample solvent Mobile phase



Assay by an HPLC method.

Date of last QC-recheck : June 2010
 Date of retest : June 2014

The values given on the 'Certificate of Analysis' are the results determined at the time of analysis.