



# INDOFINE Chemical Company, Inc.

121 Stryker Lane, Bldg. 30, Suite 1 • Hillsborough, NJ 08844 • U.S.A.

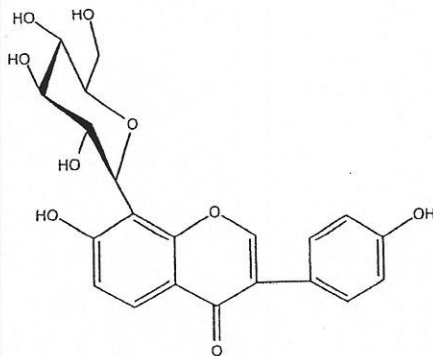
Phone: (908) 359-6778 • FAX: (908) 359-1179

website: [www.indofinechemical.com](http://www.indofinechemical.com)

e-mail: [chemical@indofinechemical.com](mailto:chemical@indofinechemical.com)

## CERTIFICATE OF ANALYSIS

<u>Catalog Number:</u>	021233S
<u>Product Name:</u>	<b>PUERARIN with HPLC</b> (Daidzein-8-C-glucoside; 7,4'-Dihydroxy-8-C-glucosylisoflavone)
<u>CAS Number:</u>	[3681-99-0]
<u>Lot Number:</u>	1502546
<u>Chemical Formula:</u>	C <sub>21</sub> H <sub>20</sub> O <sub>9</sub>
<u>Molecular Weight:</u>	416.38
<u>Appearance:</u>	Off-white powder
<u>Botanical Source:</u>	Pueraria spp.
<u>Loss on Drying:</u>	1.0%
<u>Storage:</u>	Store in a cool, dry place, protected from light. Keep package airproofed when not in use.
<u>Purity(HPLC):</u>	98.28%





# INDOFINE Chemical Company, Inc.

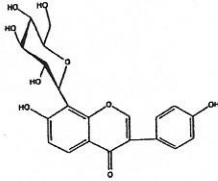
121 Stryker Lane, Bldg. 30, Suite 1 • Hillsborough, NJ 08844 • U.S.A.

Phone: (908) 359-6778 • FAX: (908) 359-1179

website: [www.indofinechemical.com](http://www.indofinechemical.com)

e-mail: [chemical@indofinechemical.com](mailto:chemical@indofinechemical.com)

## HPLC ANALYSIS



Catalog No.: 021233S

Product Name: Puerarin

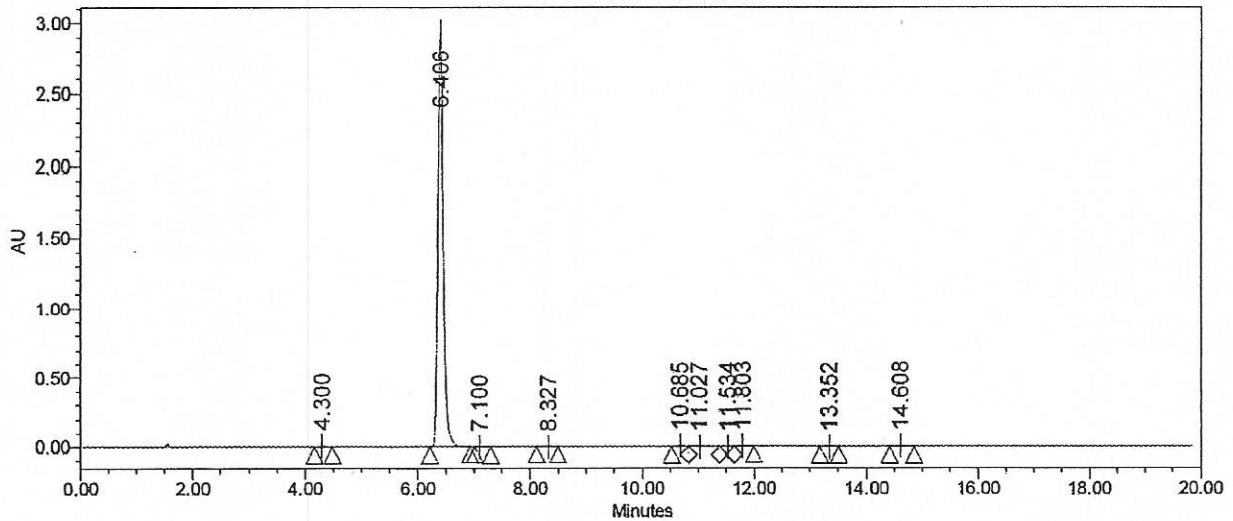
Lot No.: 1502546

### SAMPLE INFORMATION

Sample Name: Puerarin  
Sample Type: Unknown  
Vial: 1:D,6  
Injection #: 1  
Injection Volume: 5.00 ul  
Run Time: 20.0 Minutes

Acquired By: System  
Sample Set Name:  
Acq. Method Set: Puerarin  
Processing Method: Samples  
Channel Name: 250.0nm  
Proc. Chnl. Descr.: PDA 250.0 nm

Auto-Scaled Chromatogram



#### Peak Results

	Name	RT	Area	% Area	USP Plate Count	USP Resolution
1		4.300	78664	0.37	13147.94	
2		6.406	20985056	98.28	20624.76	12.82
3		7.100	18318	0.09	30718.03	4.03
4		8.327	11032	0.05	6180.51	4.45
5		10.685	44739	0.21	38530.91	7.78
6		11.027	48060	0.23	11894.74	1.07
7		11.534	12297	0.06	57475.31	1.68
8		11.803	66094	0.31	50865.81	1.35
9		13.352	26428	0.12	66294.04	7.36
10		14.608	62116	0.29	68655.23	5.77