



INDOFINE Chemical Company, Inc.

121 Stryker Lane, Bldg. 30
Hillsborough, NJ 08844 USA
Phone: (908) 359-6778; Fax: (908) 359-1179

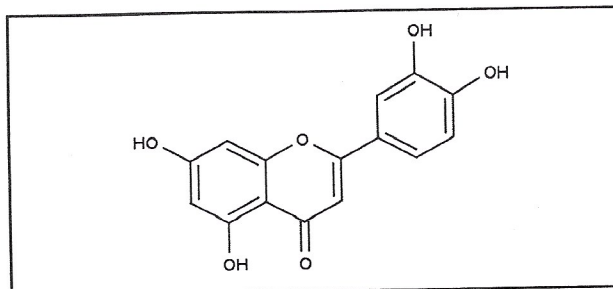
Certificate Of Analysis

021125S

LUTEOLIN

Lot No.: 21012823

CAS RN	491-70-3
MOL FORMULA	C ₁₅ H ₁₀ O ₆
MOL WEIGHT	286,25



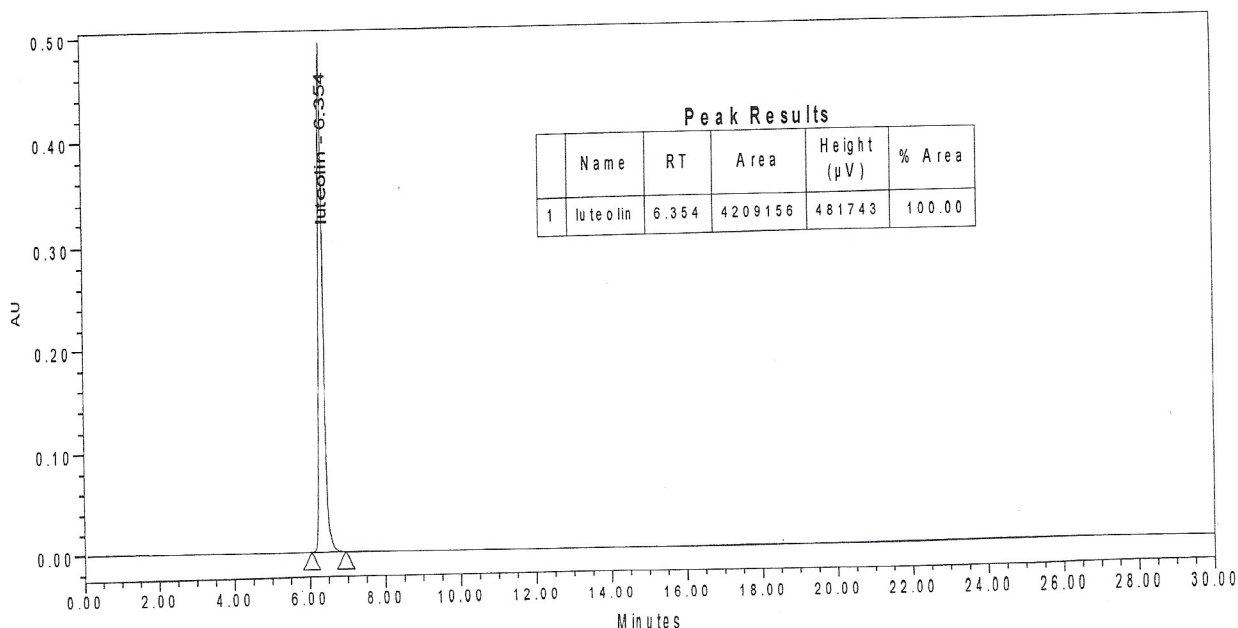
TEST	METHOD	UNIT	SPECIFICATION	RESULT
Appearance	Visual		Yellow powder	Conform
Water content	KF	% w/w		0,3
Residual solvents	GC-HS	% w/w		0,9
Inorganics	ICP-MS	% w/w		0,2
Purity	HPLC	% area	≥ 99,0	100,0
Assay	Calculated (*)	% w/w		98,6

(*) Assay = Purity by HPLC x (100 - %water - %solvents - %inorganics)

CHROMATOGRAPHIC PURITY / HPLC

Column : Symmetry Shield RP18 - 4,6x150 mm - 3,5 µm
Mobile phase : Water + 0,3% H₃PO₄ 50 / MeOH 20 / ACN 30 (v/v/v)
Detection : UV 254 nm

Temperature : 30°C
Flow rate : 1 ml/min
Injection volume : 5 µl
Injection solvent : MeOH



LONG TERM STORAGE : Below 8°C in a dry and dark place

TRANSPORT CONDITIONS : Ambient temperature