

ICC **INDOFINE Chemical Company, Inc.**

121 Stryker Lane, Bldg. 30, Suite 1 • Hillsborough, NJ 08844 • U.S.A.

Phone: (908) 359-6778 • FAX: (908) 359-1179

website: www.indofinechemical.com

e-mail: chemical@indofinechemical.com

CERTIFICATE OF ANALYSIS

Catalog Number: 021123S

Product: **KAEMPFERIDE with HPLC**
(3,5,7-Trihydroxy-4'-methoxyflavone)

CAS Number: [491-54-3]

Lot Number: 1502547

Chemical Formula: C₁₆H₁₂O₆

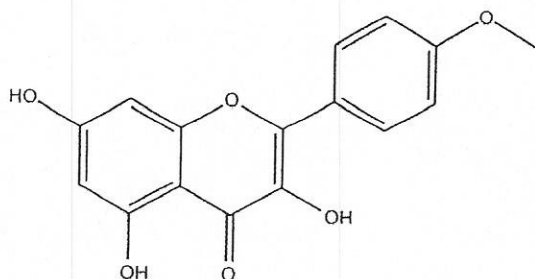
Molecular Weight: 300.27

Appearance: Yellow Powder

Loss on drying: 1.0%

Storage: Store in a cool, dry place, protected from light.
Keep package airproofed when not in use.

Purity(HPLC): 99.81%





INDOFINE Chemical Company, Inc.

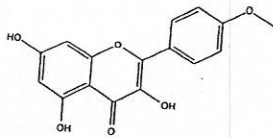
121 Stryker Lane, Bldg. 30, Suite 1 • Hillsborough, NJ 08844 • U.S.A.

Phone: (908) 359-6778 • FAX: (908) 359-1179

website: www.indofinechemical.com

e-mail: chemical@indofinechemical.com

HPLC ANALYSIS



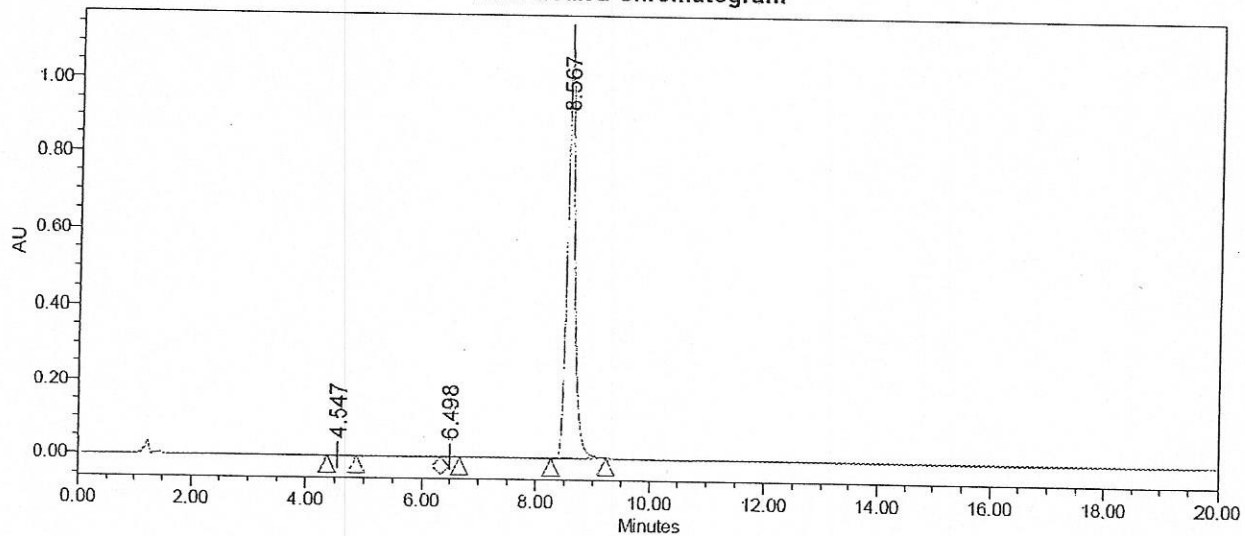
Catalog No.: 021123S
Product Name: Kaempferide
Lot No.: 1502547

SAMPLE INFORMATION

Sample Name: Kaempferide
Sample Type: Unknown
Vial: 1:E,7
Injection #: 1
Injection Volume: 10.00 ul
Run Time: 20.0 Minutes

Acquired By: System
Sample Set Name:
Acq. Method Set: Kaempferide
Processing Method: Samples1
Channel Name: 360.0nm
Proc. Chnl. Descr.: PDA 360.0 nm

Auto-Scaled Chromatogram



Peak Results

Name	RT	Area	% Area	USP Plate Count	USP Resolution
1	4.547	13166	0.12	8178.28	
2	6.498	6911	0.07	10560.37	7.26
3	8.567	10604603	99.81	20230.69	8.02