



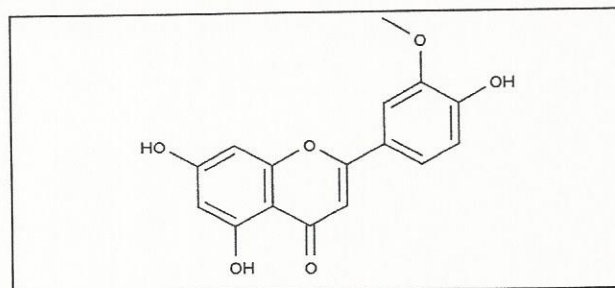
# INDOFINE Chemical Company, Inc.

121 Stryker Lane, Bldg. 30  
Hillsborough, NJ 08844 USA  
Phone: (908) 359-6778; Fax: (908) 359-1179

## Certificate Of Analysis

**021104S****CHRYSOERIOL****Lot No.: 18041610**

CAS RN	491-71-4
MOL FORMULA	C <sub>16</sub> H <sub>12</sub> O <sub>6</sub>
MOL WEIGHT	300,28



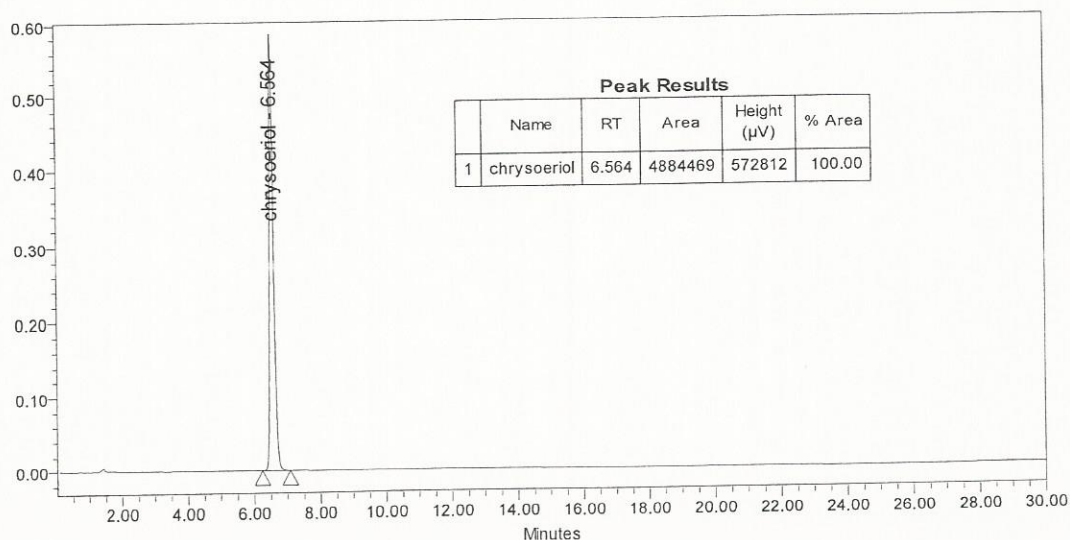
TEST	METHOD	UNIT	SPECIFICATION	RESULT
Appearance	Visual		Yellow powder	Conform
Water content	KF	% w/w		< 0,2
Residual solvents	GC-HS	% w/w		0,3
Inorganics	ICP-MS	% w/w		0,2
Purity	HPLC	% area	≥ 99,0	100
<b>Assay</b>	<b>Calculated (*)</b>	<b>% w/w</b>		<b>99,5</b>

(\*) Assay = Purity by HPLC x (100 - %water - %solvents - %inorganics)

### CHROMATOGRAPHIC PURITY / HPLC

Column : Symmetry Shield RP18 - 4,6x150 mm - 3,5 μm  
Mobile phase : Water + 0,3% H3PO4 55 / ACN 45 (v/v)  
Detection : UV 254 nm

Temperature : 30°C  
Flow rate : 1 ml/min  
Injection volume : 5 μl  
Injection solvent : EtOH + 10% DMSO



LONG TERM STORAGE : Below 8°C in a dry and dark place

TRANSPORT CONDITIONS : Ambient temperature