



INDOFINE Chemical Company, Inc.

121 Stryker Lane, Bldg. 30, Suite 1 • Hillsborough, NJ 08844 • U.S.A.

Phone: (908) 359-6778 • FAX: (908) 359-1179

website: www.indofinechemical.com

e-mail: chemical@indofinechemical.com

CERTIFICATE OF ANALYSIS

Catalog Number: 021084

Product name: **6-METHOXYLUTEOLIN**
(Eupafolin, Nepetin)

CAS Number: [520-11-6]

Lot Number: 1506610

Chemical Formula: C₁₆H₁₂O₇

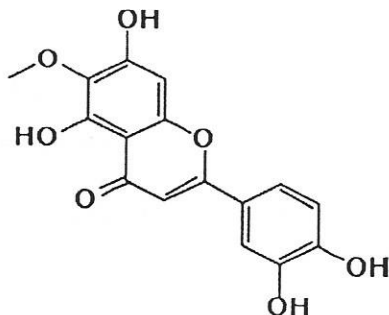
Molecular Weight: 316.26

Loss on drying: 0.8%

Appearance: Light yellow powder

Storage: Store in a cool, dry place. Protect from light.

Purity(HPLC): 99.91%





INDOFINE Chemical Company, Inc.

121 Stryker Lane, Bldg. 30, Suite 1 • Hillsborough, NJ 08844 • U.S.A.

Phone: (908) 359-6778 • FAX: (908) 359-1179

website: www.indofinechemical.com

e-mail: chemical@indofinechemical.com

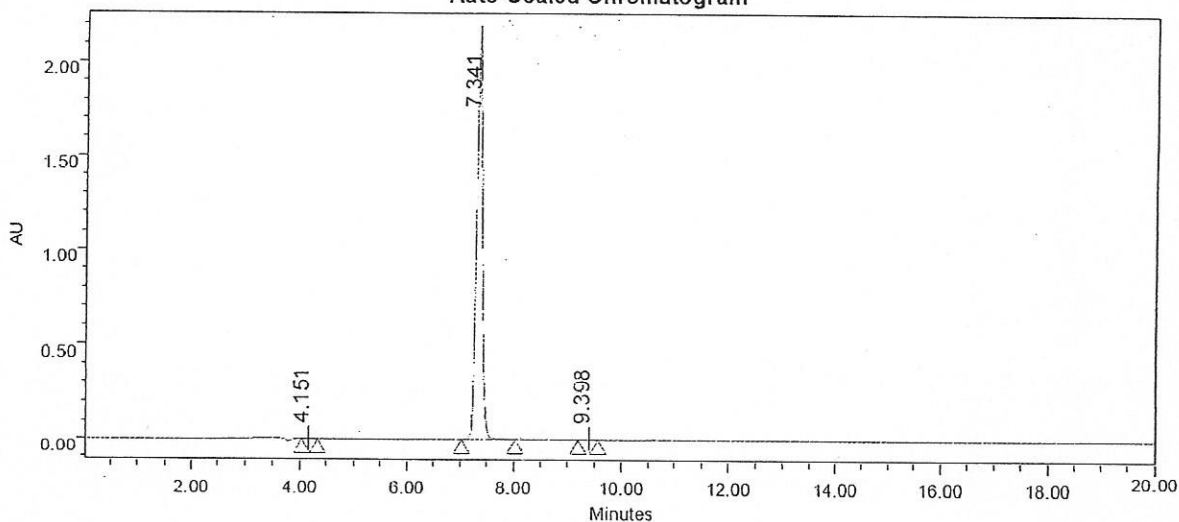
HPLC ANALYSIS

Catalog No.: 021084
Product Name: 6-Methoxyluteolin
Lot No.: 1506610

SAMPLE INFORMATION

Sample Name:	Nepetin	Acquired By:	System
Sample Type:	Unknown	Sample Set Name:	
Vial:	1:C,3	Acq. Method Set:	Nepetin
Injection #:	1	Processing Method:	samples
Injection Volume:	10.00 ul	Channel Name:	345.0nm
Run Time:	20.0 Minutes	Proc. Chnl. Descr.:	PDA 345.0 nm

Auto-Scaled Chromatogram



Peak Results

Name	Retention Time (min)	Area ($\mu\text{V}\cdot\text{sec}$)	% Area	USP Plate Count	USP Resolution
1	4.151	4801	0.03	9224.04	
2	7.341	16671436	99.91	21075.33	16.36
3	9.398	9385	0.06	30961.98	9.56