



INDOFINE Chemical Company, Inc.

121 Stryker Lane, Bldg. 30, Suite 1 • Hillsborough, NJ 08844 • U.S.A.

Phone: (908) 359-6778 • FAX: (908) 359-1179

website: www.indofinechemical.com

e-mail: chemical@indofinechemical.com

CERTIFICATE OF ANALYSIS

Cat No.: 021010

Product: **5,7-DIMETHOXYFLAVONE**
(Methylated Chrysin; Chrysin dimethyl ether)

CAS No.: [21392-57-4]

Lot Number: 99201

Molecular Formula: C₁₇H₁₄O₄

Molecular Weight: 282.3

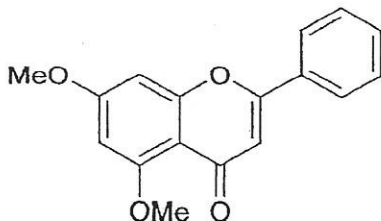
Melting Point: 146-148°C

Appearance: Off-white powder

TLC: Chloroform:methanol (9.5:0.5)

Solubility: Soluble in CDCl₃

Purity: 99.56%





INDOFINE Chemical Company, Inc.

121 Stryker Lane, Bldg. 30, Suite 1 • Hillsborough, NJ 08844 • U.S.A.

Phone: (908) 359-6778 • FAX: (908) 359-1179

website: www.indofinechemical.com

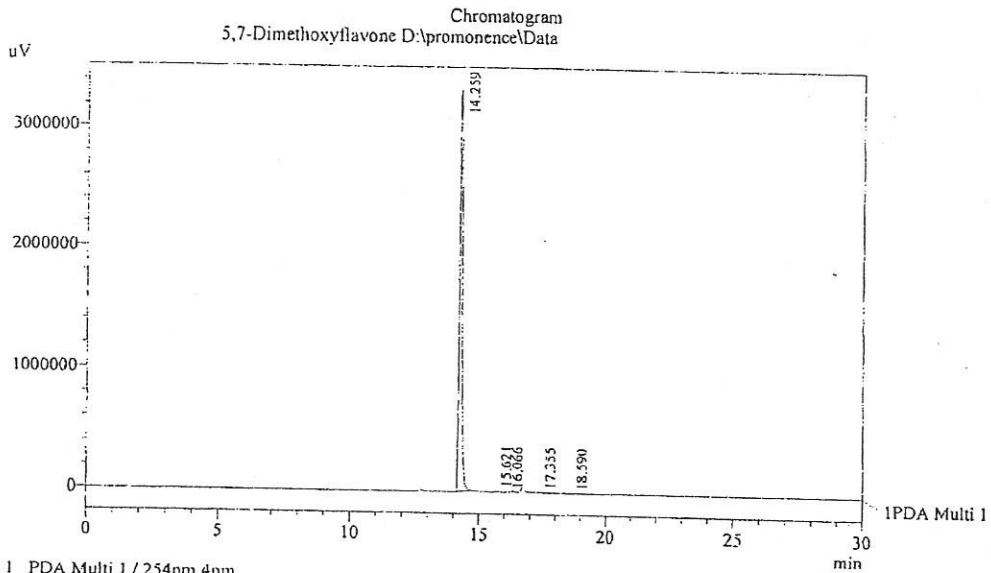
e-mail: chemical@indofinechemical.com

HPLC ANALYSIS

Acquired by : Sanjeev
Sample Name : 5,7-Dimethoxyflavone
Sample ID : Lot No:- 99201
Injection Volume : 20 uL
Data Filename : 060312C.lcd
Method Filename : Linear Gradient.M.lcm

Catalog No.: 021010
Product name: 5,7-Dimethoxyflavone
Lot No.: 99201

Column : LUNA C-18(2), (250mm x4.6mm 5.0μ)
Flow : 1.000 mL/min
Mobile Phase : A(0.05% TFA in water) B(Acetonitrile)
0.01 90 10
12.0 10 90
25.0 10 90
28.0 90 10
30.0 90 10



1 PDA Multi 1 / 254nm 4nm

PeakTable

Peak#	Name	Ret. Time	Area	Area %	Relative Retention Time
1	RT:14.259	14.259	26840853	99.56	1.00
2	RT:15.621	15.621	65557	0.24	1.10
3	RT:16.066	16.066	8258	0.03	1.13
4	RT:17.355	17.355	38688	0.14	1.22
5	RT:18.590	18.590	6431	0.02	1.30
Total			26959787	100.00	



INDOFINE Chemical Company, Inc.

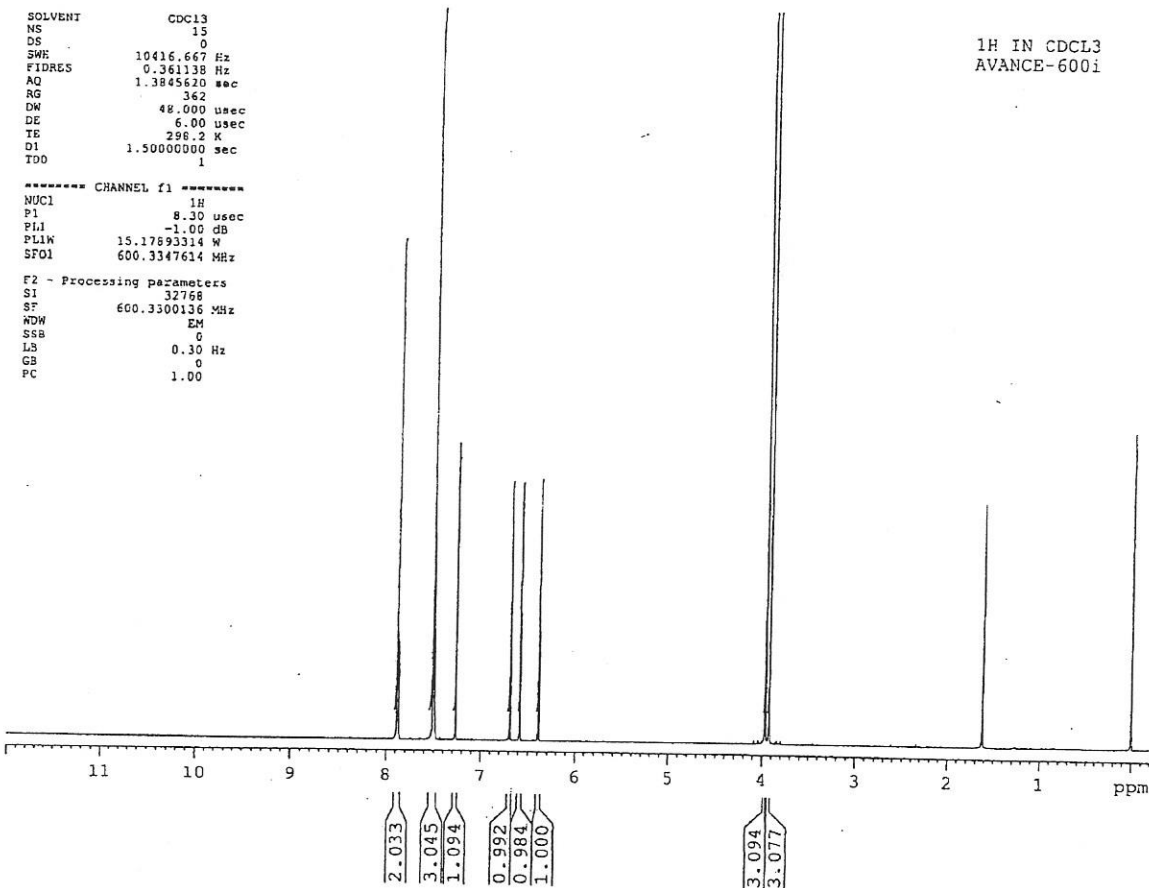
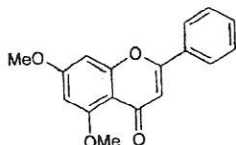
121 Stryker Lane, Bldg. 30, Suite 1 • Hillsborough, NJ 08844 • U.S.A.

Phone: (908) 359-6778 • FAX: (908) 359-1179

website: www.indofinechemical.com

e-mail: chemical@indofinechemical.com

Catalog No.: 021010
Product name: 5,7-Dimethoxyflavone
Lot No.: 99201





INDOFINE Chemical Company, Inc.

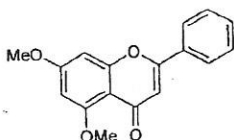
121 Stryker Lane, Bldg. 30, Suite 1 • Hillsborough, NJ 08844 • U.S.A.

Phone: (908) 359-6778 • FAX: (908) 359-1179

website: www.indofinechemical.com

e-mail: chemical@indofinechemical.com

Catalog No.: 021010
Product name: 5,7-Dimethoxyflavone
Lot No.: 99201

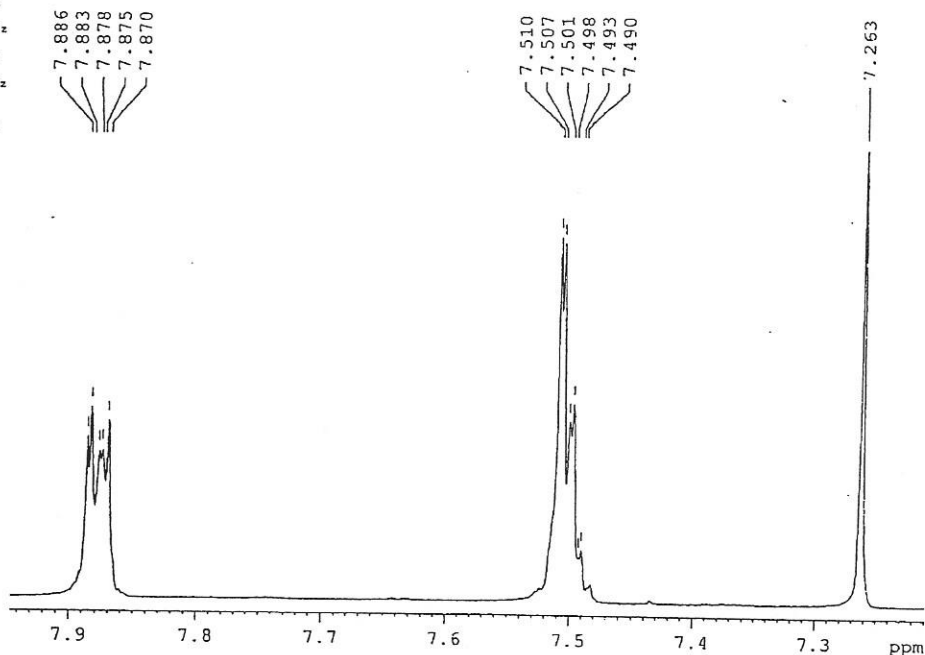


SOLVENT CDC13
NS 15
DS 0
SMH 10416.667 Hz
FIDRES 0.351138 Hz
AQ 1.3845620 sec
RG 362
DW 48.000 usec
DE 6.00 usec
TE 298.2 K
DJ 1.50000000 sec
TDO 1

¹H IN CDCL₃
AVANCE-6001

----- CHANNEL f1 -----
NUC1 ¹H
F1 8.30 usec
PL1 -1.00 dB
PL1W 15.17893314 W
SFO1 600.3347614 MHz

F2 - Processing parameters
SI 32768
SF 600.3300136 MHz
WDW EM
SSB 0
LB 0.30 Hz
GB 6
PC 1.00





INDOFINE Chemical Company, Inc.

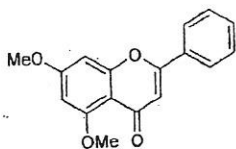
121 Stryker Lane, Bldg. 30, Suite 1 • Hillsborough, NJ 08844 • U.S.A.

Phone: (908) 359-6778 • FAX: (908) 359-1179

website: www.indofinechemical.com

e-mail: chemical@indofinechemical.com

Catalog No.: 021010
Product name: 5,7-Dimethoxyflavone
Lot No.: 99201



SOLVENT CDCL3
NS 15
DS 0
SWH 10416.657 Hz
FIDRES 0.361138 Hz
AQ 1.5845620 sec
RG 362
DW 48.000 usec
DE 6.00 usec
TE 298.2 K
D1 1.50000000 sec
TDO 1

1H IN CDCL3
AVANCE-600i

----- CHANNEL f1 -----
NUC1 1H
P1 8.30 usec
PL1 -1.00 dB
PL1W 15.17893314 W
SFO1 600.3347614 MHz

F2 - Processing parameters
SI 32768
SF 600.3300136 MHz
WDW EM
SSM 0
LR 0.30 Hz
GB 0
PC 1.00

