

 **INDOFINE Chemical Company, Inc.**

121 Stryker Lane, Bldg. 30, Suite 1 • Hillsborough, NJ 08844 • U.S.A.

Phone: (908) 359-6778 • FAX: (908) 359-1179

website: www.indofinechemical.com

e-mail: chemical@indofinechemical.com

CERTIFICATE OF ANALYSIS

Catalog Number: 021010

Product Name: **5,7-DIMETHOXYFLAVONE**
(Methylated Chrysin; Chrysin dimethyl ether)

CAS No.: [21392-57-4]

Lot Number: 1401408

Molecular Formula: C₁₇H₁₄O₄

Molecular Weight: 282.30

Melting Point: 151-153°C

Appearance: Off white powder

TLC: Chloroform : Methanol (9.5:0.5)

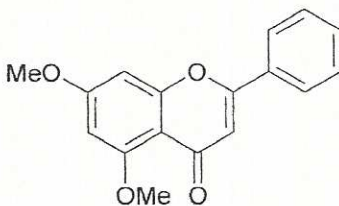
Solubility: Soluble in Chloroform

Moisture(KF): 0.17%

NMR Spectrum: Enclosed (Confirms to the structure)

Storage: Store in a cool, dry place

Purity (HPLC): 99.81%





INDOFINE Chemical Company, Inc.

121 Stryker Lane, Bldg. 30, Suite 1 • Hillsborough, NJ 08844 • U.S.A.

Phone: (908) 359-6778 • FAX: (908) 359-1179

website: www.indofinechemical.com

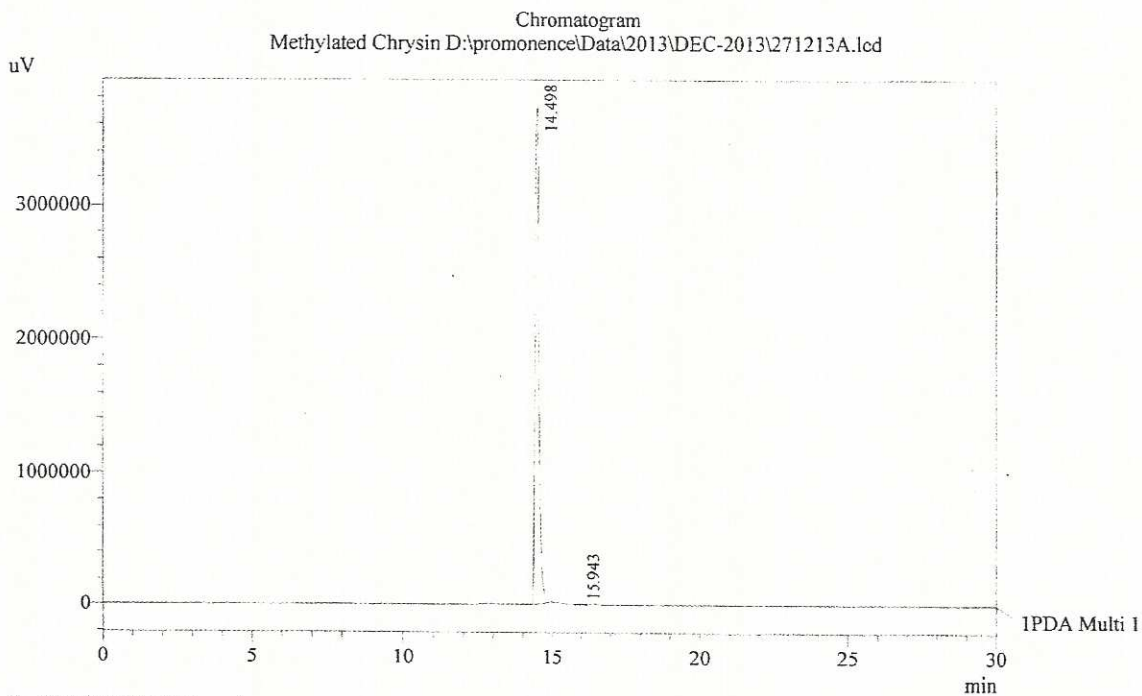
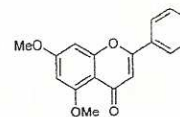
e-mail: chemical@indofinechemical.com

HPLC ANALYSIS

Acquired by : Sanjeev
Sample Name : Methylated Chrysin
Sample ID : 10 Kgs Lot
Injection Volume : 20 uL
Data Filename : 271213A.lcd
Method Filename : Linear Gradient.M.lcm

Catalog No.: 021010
Product Name: 5,7-Dimethoxyflavone
(Methylated Chrysin)
Lot No.: 1401408

Column : LUNA C-18(2), (250mm x4.6mm 5.0μ)
Flow : 1.000 mL/min.
Mobile Phase : A(0.05% TFA in water) B(Acetonitrile)
0.01 90 10
12.0 10 90
20.0 10 90
23.0 90 10
30.0 90 10



PDA Ch1 254nm 4nm

PeakTable

Peak#	Name	Ret. Time	Area	Area %	Relative Retention Time
1	Methylated chrysin	14.498	36394936	99.81	1.00
2	RT:15.943	15.943	69013	0.19	1.10
Total			36463950	100.00	



INDOFINE Chemical Company, Inc.

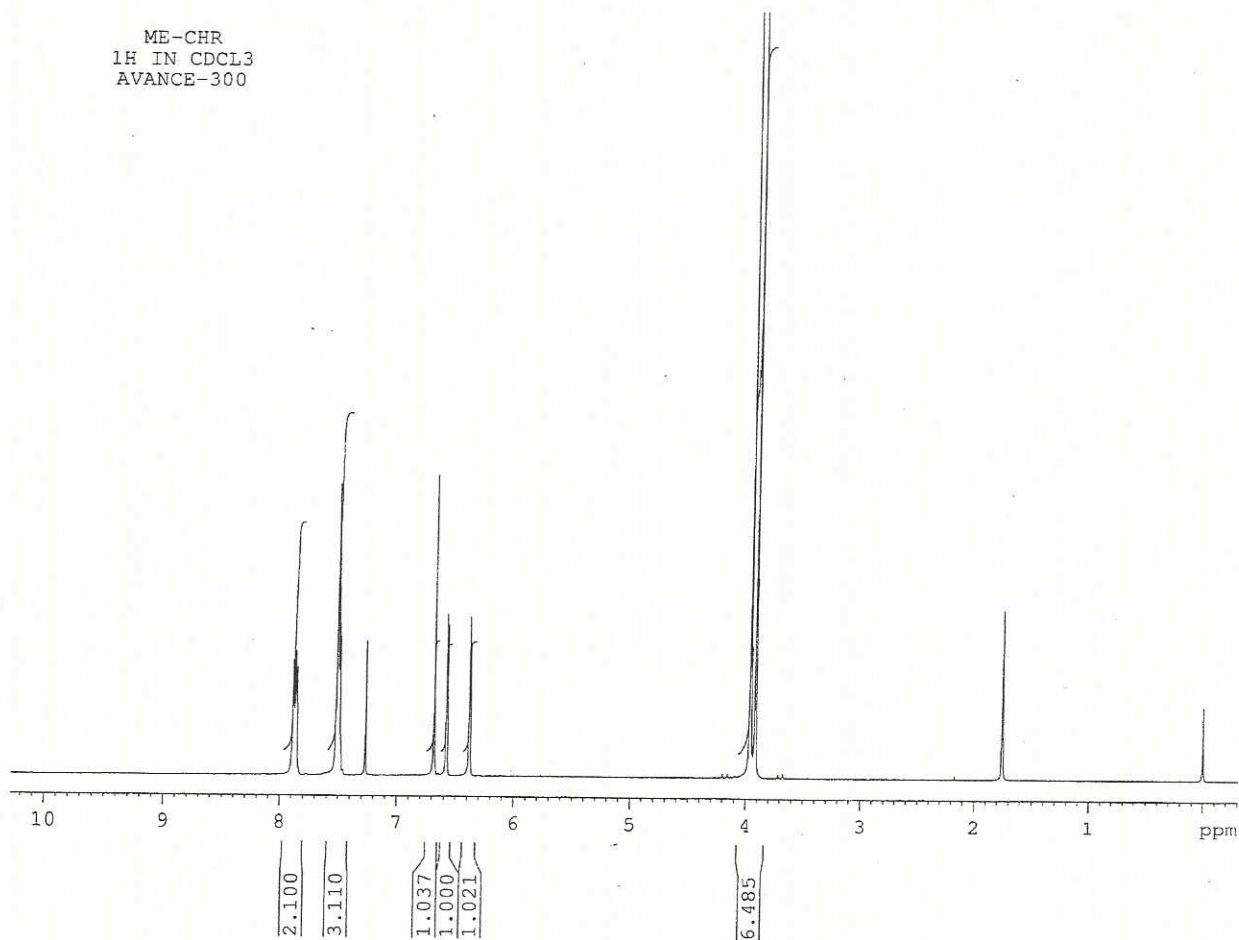
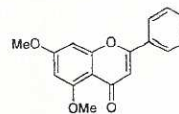
121 Stryker Lane, Bldg. 30, Suite 1 • Hillsborough, NJ 08844 • U.S.A.

Phone: (908) 359-6778 • FAX: (908) 359-1179

website: www.indofinechemical.com

e-mail: chemical@indofinechemical.com

Catalog No.: 021010
Product Name: 5,7-Dimethoxyflavone
(Methylated Chrysin)
Lot No.: 1401408





INDOFINE Chemical Company, Inc.

121 Stryker Lane, Bldg. 30, Suite 1 • Hillsborough, NJ 08844 • U.S.A.

Phone: (908) 359-6778 • FAX: (908) 359-1179

website: www.indofinechemical.com

e-mail: chemical@indofinechemical.com

Catalog No.: 021010
Product Name: 5,7-Dimethoxyflavone
(Methylated Chrysin)
Lot No.: 1401408

