



INDOFINE Chemical Company, Inc.

121 Stryker Lane, Bldg. 30, Suite 1 • Hillsborough, NJ 08844 • U.S.A.

Phone: (908) 359-6778 • FAX: (908) 359-1179

website: www.indofinechemical.com

e-mail: chemical@indofinechemical.com

CERTIFICATE OF ANALYSIS

Catalog Number: 021010

Product Name: **5,7-DIMETHOXYFLAVONE**
(Methylated Chrysin; Chrysin dimethyl ether)

CAS No.: [21392-57-4]

Lot Number: 1308369

Molecular Formula: C₁₇H₁₄O₄

Molecular Weight: 282.30

Melting Point: 151-153°C

Appearance: Off white powder

TLC: Chloroform : Methanol (9.5:0.5)

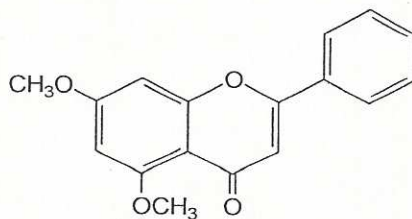
Solubility: Soluble in Chloroform

Moisture(KF): 0.42%

NMR Spectrum: Enclosed (Confirms to the structure)

Storage: Store in a cool, dry place

Purity (HPLC): 99.76%



Expiration Date: August 2018



INDOFINE Chemical Company, Inc.

121 Stryker Lane, Bldg. 30, Suite 1 • Hillsborough, NJ 08844 • U.S.A.

Phone: (908) 359-6778 • FAX: (908) 359-1179

website: www.indofinechemical.com

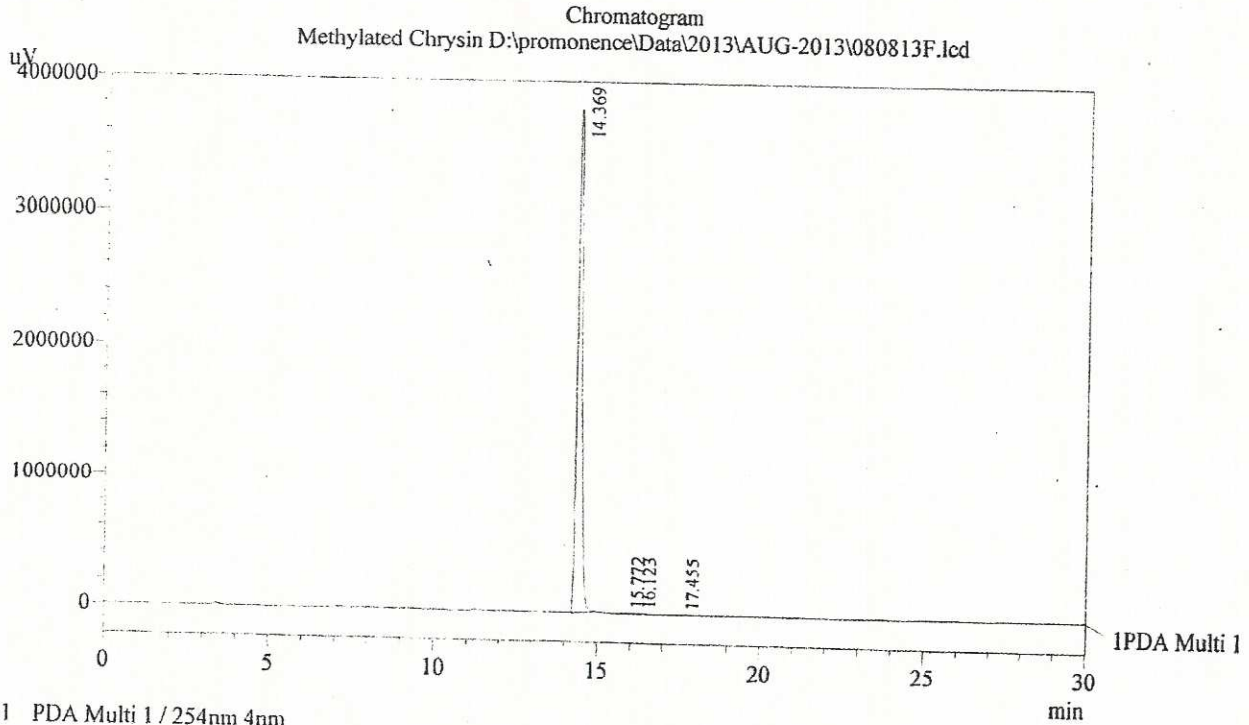
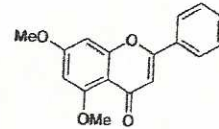
e-mail: chemical@indofinechemical.com

HPLC ANALYSIS

Acquired by : Sanjeev
 Sample Name : Methylated Chrysin
 Sample ID : 10.0Kg Lot
 Injection Volume : 20 uL
 Data Filename : 080813F.lcd
 Method Filename : Linear Gradient M.lcm

Catalog No.: 021010
 Product Name: 5,7-Dimethoxyflavone
 (Methylated Chrysin)
 Lot No.: 1308369

Column : LUNA C-18(2), (250mm x4.6mm 5.0μ)
 Flow : 1.000 mL/min.
 Mobile Phase : A(0.05% TFA in water) B(Acetonitrile)
 0.01 90 10
 12.0 10 90
 20.0 10 90
 23.0 90 10
 30.0 90 10
 Diluent : Acetonitrile



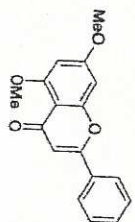
PDA Ch1 254nm 4nm

PeakTable

Peak#	Name	Ret. Time	Area	Area %	Relative Retention Time
1	Methylated chrysin	14.369	43123541	99.76	1.00
2	RT:15.772	15.772	45610	0.11	1.10
3	RT:16.123	16.123	36183	0.08	1.12
4	RT:17.455	17.455	22779	0.05	1.21
Total			43228113	100.00	



INDOFINE Chemical Company, Inc.
 121 STRYKER LANE
 BLDG. 30, SUITE 1
 HILLSBOROUGH, NJ 08844

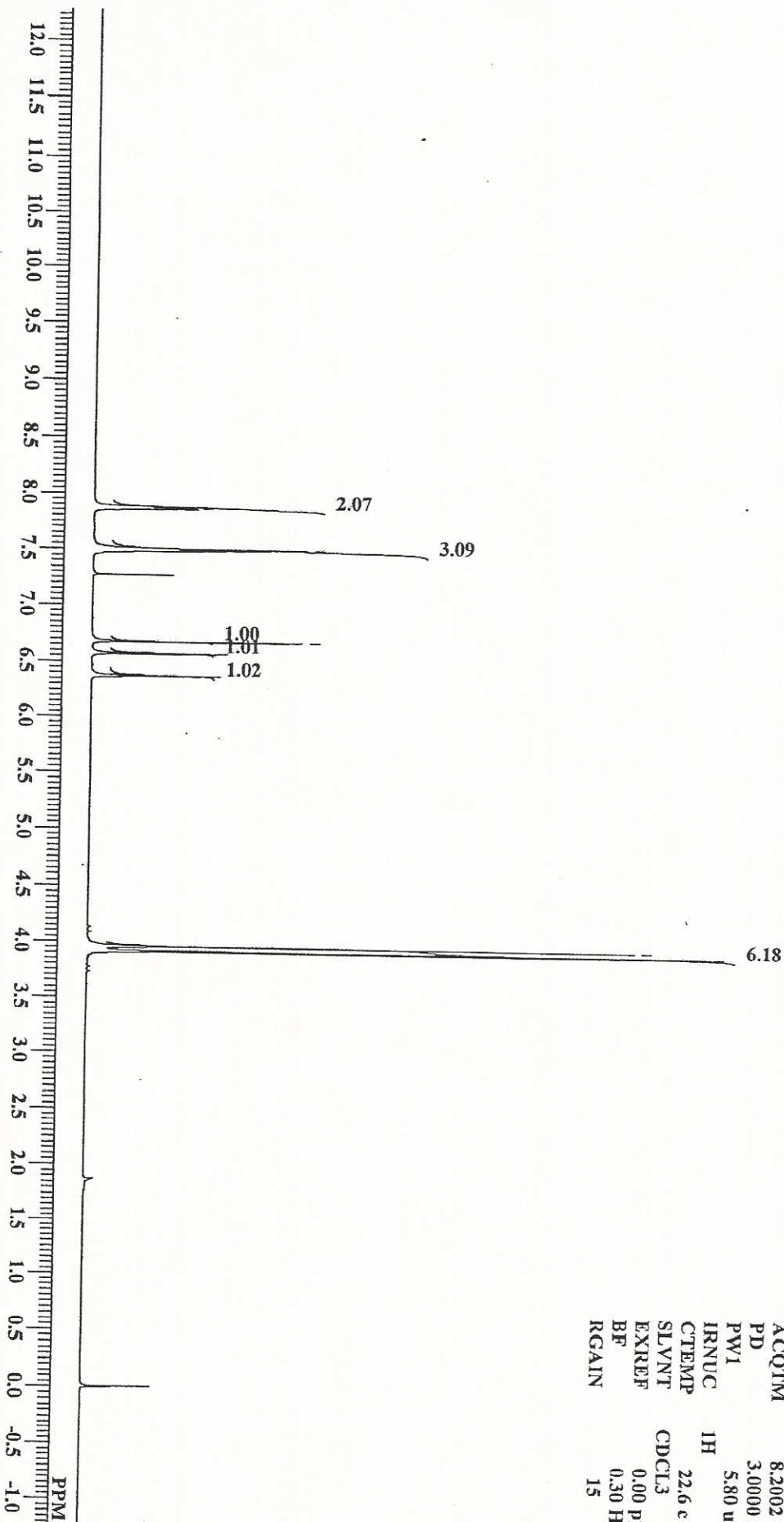


Catalog No.: 021010
 Product Name: 5,7-Dimethoxyflavone
 (Methylated Chrysin)
 Lot No.: 1308369

MECHY 10 Kg Lot 1H NMR CDCl3
 Analysed By : JNR

7.877
 7.872
 7.864
 7.861
 7.858
 7.855
 7.853
 7.503
 7.499
 7.490
 6.675
 6.570
 6.565
 6.373
 6.368

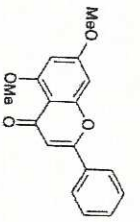
3.954
 3.911



DPFILE	MECHY 10 Kg Lot 1H.a1s
COMNT	MECHY 10 Kg Lot 1H.NM1
DATIM	Fri Aug 09 03:37:36 2013
OBNUC	1H
EXMOD	NON
OBFRQ	399.65 MHz
OBSET	124.00 KHz
OBFIN	10500.00 Hz
POINT	65536
FREQU	7992.01 Hz
SCANS	16
ACQTM	8.2002 sec
PD	3.0000 sec
PW1	5.80 usec
IRNUC	1H
CTEMP	22.6 c
SLVNT	CDCl3
EXREF	0.00 ppm
BF	0.30 Hz
RGAIN	15



INDOFINE Chemical Company, Inc.
 121 STRYKER LANE
 BLDG. 30, SUITE 1
 HILLSBOROUGH, NJ 08844



Catalog No.: 021010
 Product Name: 5,7-Dimethoxyflavone
 (Methylated Chrysin)
 Lot No.: 1308369

MECHY 10 Kg Lot 1H NMR CDCl3

Analysed By: JNR

7.877
 7.872
 7.864
 7.861
 7.858
 7.855
 7.853

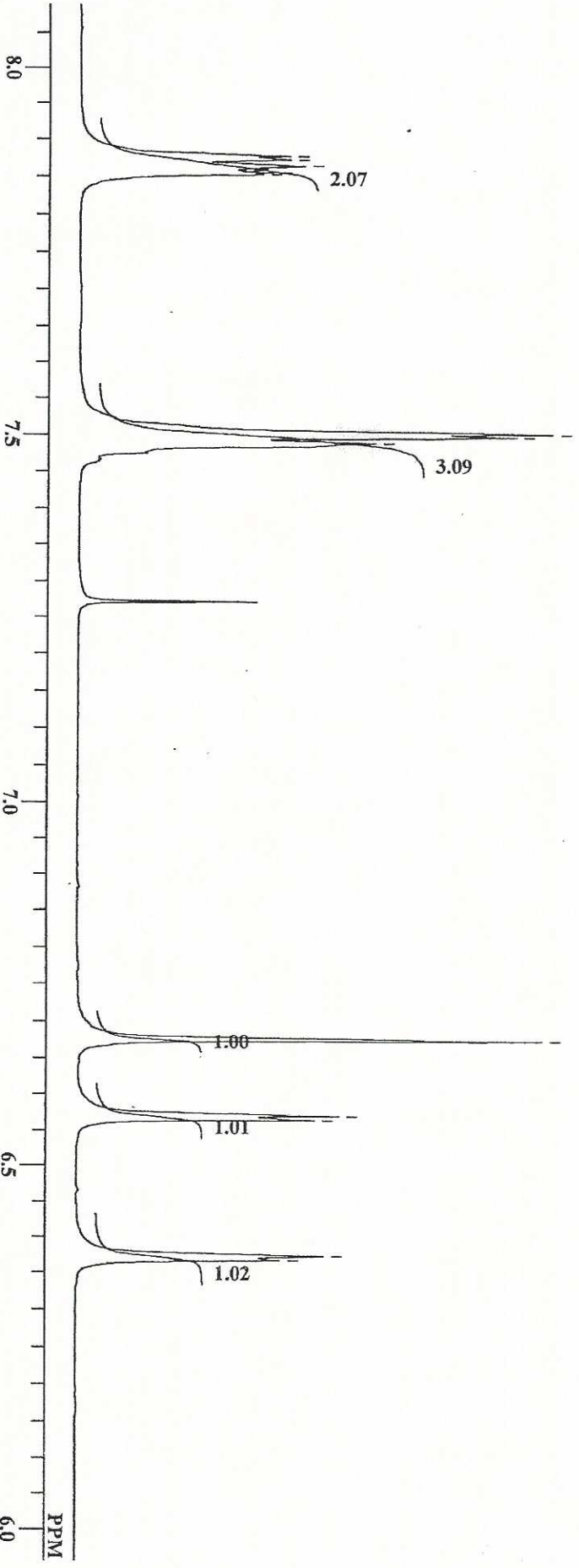
7.503
 7.499
 7.490

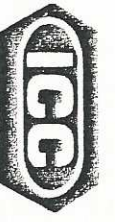
6.675

6.570
 6.565

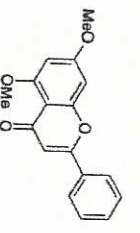
6.373
 6.368

DFILE	MECHY 10 Kg Lot 1H.a1s
COMNT	MECHY 10 Kg Lot 1H NMR
DATIM	Fri Aug 09 03:37:36 2013
OBNUC	1H
EXMOD	NON
OBFRQ	399.65 MHz
OBSET	124.00 KHz
OBFIN	10500.00 Hz
POINT	65536
FREQU	7992.01 Hz
SCANS	16
ACQTM	8.2002 sec
PD	3.0000 sec
PWI	5.80 usec
IRNUC	1H
CTEMP	22.6 c
SLVNT	CDCl3
EXREF	0.00 ppm
BF	0.30 Hz
RGAIN	15



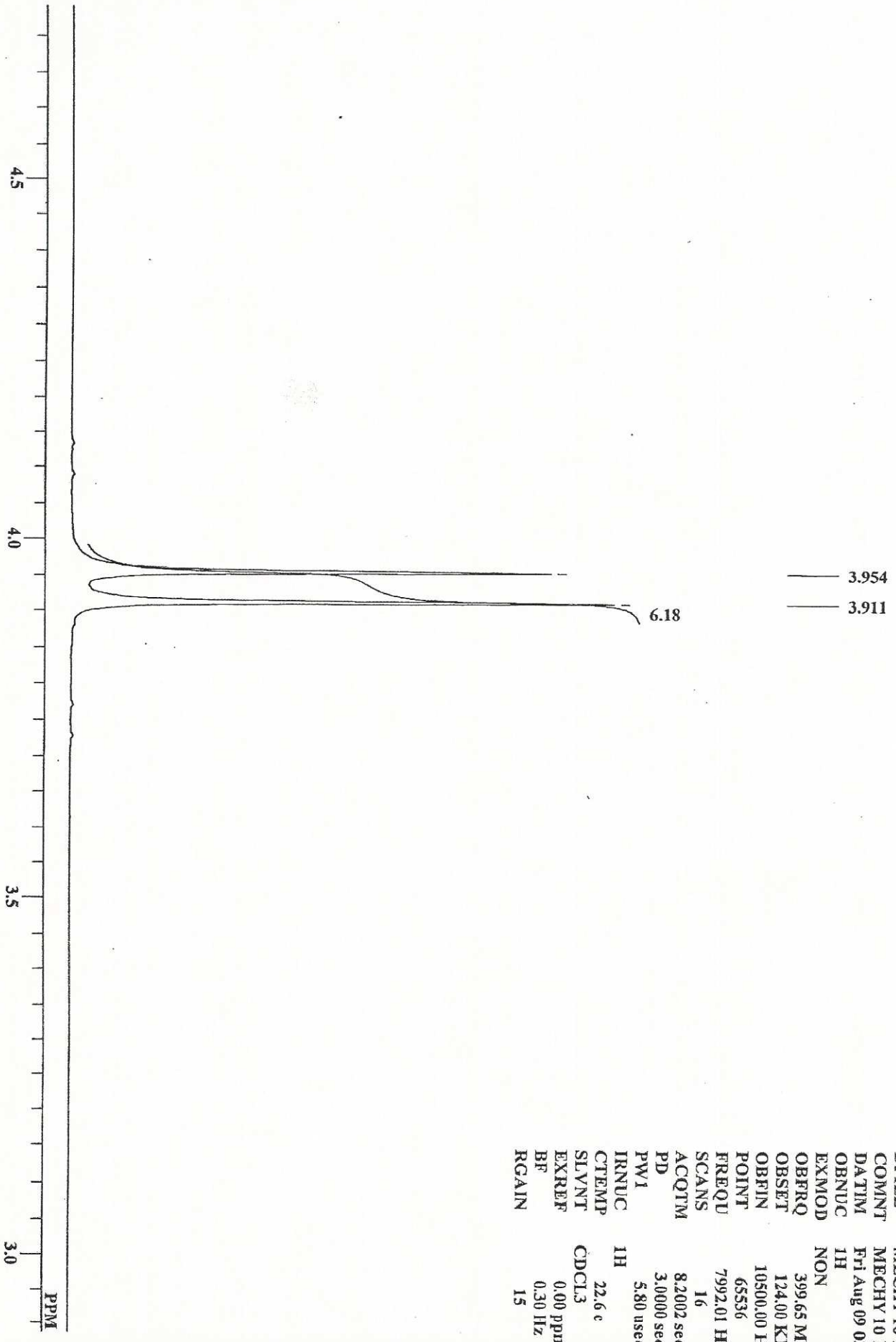


INDOFINE Chemical Company, Inc.
 121 STRYKER LANE
 BLDG. 30, SUITE 1
 HILLSBOROUGH, NJ 08844



Catalog No.: 021010
 Product Name: 5,7-Dimethoxyflavone
 (Methylated Chrysin)
 Lot No.: 1308369

MECHY 10 Kg Lot 1H NMR CDC13
 Analysed By : JNR



DPFILE	MECHY 10 Kg Lot 1H.als
COMNT	MECHY 10 Kg Lot 1H NMI
DATEM	Fri Aug 09 03:37:36 2013
OBNUC	1H
EXMOD	NON
OBFRQ	399.65 MHz
OBSET	124.00 KHz
OBFIN	10500.00 Hz
POINT	65536
FREQU	7992.01 Hz
SCANS	16
ACQTM	8.2002 sec
PD	3.0000 sec
PW1	5.80 usec
IRNUC	1H
CTEMP	22.6 c
SLVNT	CDCl3
EXREF	0.00 ppm
BF	0.30 Hz
RGAIN	15