



INDOFINE Chemical Company, Inc.

121 Stryker Lane, Bldg. 30, Suite 1 • Hillsborough, NJ 08844 • U.S.A.

Phone: (908) 359-6778 • FAX: (908) 359-1179

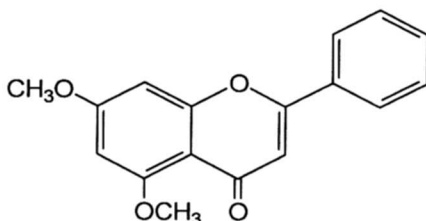
website: www.indofinechemical.com

e-mail: chemical@indofinechemical.com

CERTIFICATE OF ANALYSIS

Cat No.: 021010

<u>Product:</u>	5,7-DIMETHOXYFLAVONE (Methylated Chrysin; Chrysin dimethyl ether)
<u>CAS No.:</u>	[21392-57-4]
<u>Lot Number:</u>	1204203
<u>Molecular Formula:</u>	C ₁₇ H ₁₄ O ₄
<u>Molecular Weight:</u>	282.3
<u>Melting Point:</u>	152-154°C
<u>Appearance:</u>	Off white powder
<u>TLC:</u>	Chloroform : Methanol (9.5:0.5)
<u>Solubility:</u>	Soluble in Chloroform
<u>Storage:</u>	Cool, dry place
<u>Purity (HPLC):</u>	99.69%



Expiration Date: March 2017



INDOFINE Chemical Company, Inc.

121 Stryker Lane, Bldg. 30, Suite 1 • Hillsborough, NJ 08844 • U.S.A.

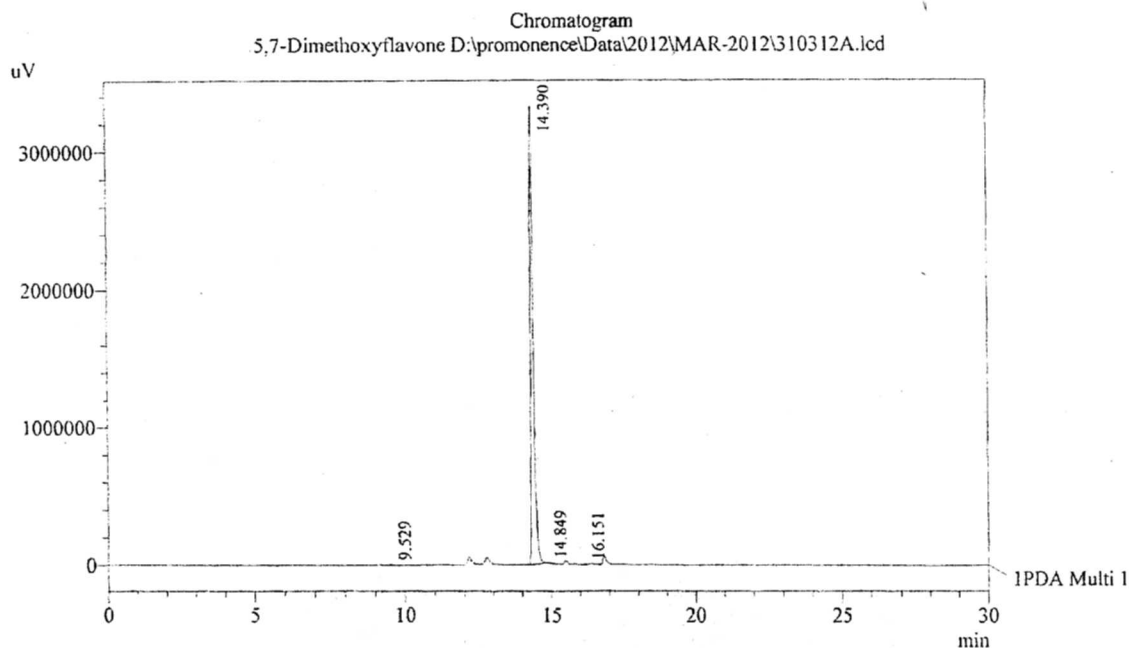
Phone: (908) 359-6778 • FAX: (908) 359-1179

website: www.indofinechemical.com

e-mail: chemical@indofinechemical.com

HPLC ANALYSIS

Acquired by	: Sanjeev	Catalog No.:	021010
Sample Name	: 5,7-Dimethoxyflavone	Product name:	Methylated Chrysin
Sample ID	: 12.1 Kg Lot	Lot No.:	1204203
Injection Volume	: 20 uL		
Data Filename	: 310312A.lcd		
Method Filename	: Linear Gradient.M.lcm		
Date Acquired	: 3/31/2012 9:50:17 AM		
Data Processed	: 3/31/2012 10:33:08 AM		
Column	: LUNA C-18(2), (250mm x4.6mm 5.0μ)		
Flow	: 1.000 mL/min.		
Mobile Phase	: A(0.05% TFA in water) B(Acetonitrile)		
	0.01 90 10		
	12.0 10 90		
	25.0 10 90		
	28.0 90 10		
	30.0 90 10		



1 PDA Multi 1 / 254nm 4nm

PeakTable

PDA Ch1 254nm 4nm

Peak#	Name	Ret. Time	Area	Area %	Relative Retention Time
1	RT:9.529	9.529	46837	0.20	0.66
2	5,7-Dimethoxyflavone	14.390	23209899	99.69	1.00
3	RT:14.849	14.849	13197	0.06	1.03
4	RT:16.151	16.151	12002	0.05	1.12
Total			23281934	100.00	



INDOFINE Chemical Company, Inc.
121 STRYKER LANE
BLDG. 30, SUITE 1
HILLSBOROUGH, NJ 08844

Catalog No.: 021010
Product name: Methylated Chrysin
Lot No.: 1204203

R.21875
CHY-12KG
1H IN CDCL3
AVANCE-300

