



INDOFINE Chemical Company, Inc.

121 Stryker Lane, Bldg. 30, Suite 1 • Hillsborough, NJ 08844 • U.S.A.

Phone: (908) 359-6778 • FAX: (908) 359-1179

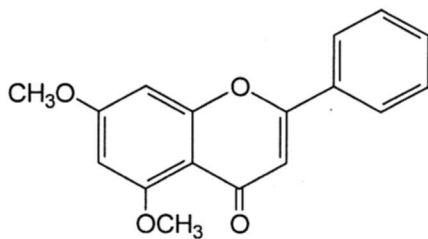
website: www.indofinechemical.com

e-mail: chemical@indofinechemical.com

CERTIFICATE OF ANALYSIS

Cat No.: 021010

<u>Product:</u>	5,7-DIMETHOXYFLAVONE (Methylated Chrysin; Chrysin dimethyl ether)
<u>CAS No.:</u>	[21392-57-4]
<u>Lot Number:</u>	1202190
<u>Molecular Formula:</u>	C ₁₇ H ₁₄ O ₄
<u>Molecular Weight:</u>	282.3
<u>Melting Point:</u>	153-155°C
<u>Moisture:</u>	0.15
<u>Appearance:</u>	Off white powder
<u>TLC:</u>	Chloroform : Methanol (9.5:0.5)
<u>Solubility:</u>	Soluble in Chloroform
<u>Storage:</u>	Cool, dry place
<u>Purity (HPLC):</u>	99.8%





INDOFINE Chemical Company, Inc.

121 Stryker Lane, Bldg. 30, Suite 1 • Hillsborough, NJ 08844 • U.S.A.

Phone: (908) 359-6778 • FAX: (908) 359-1179

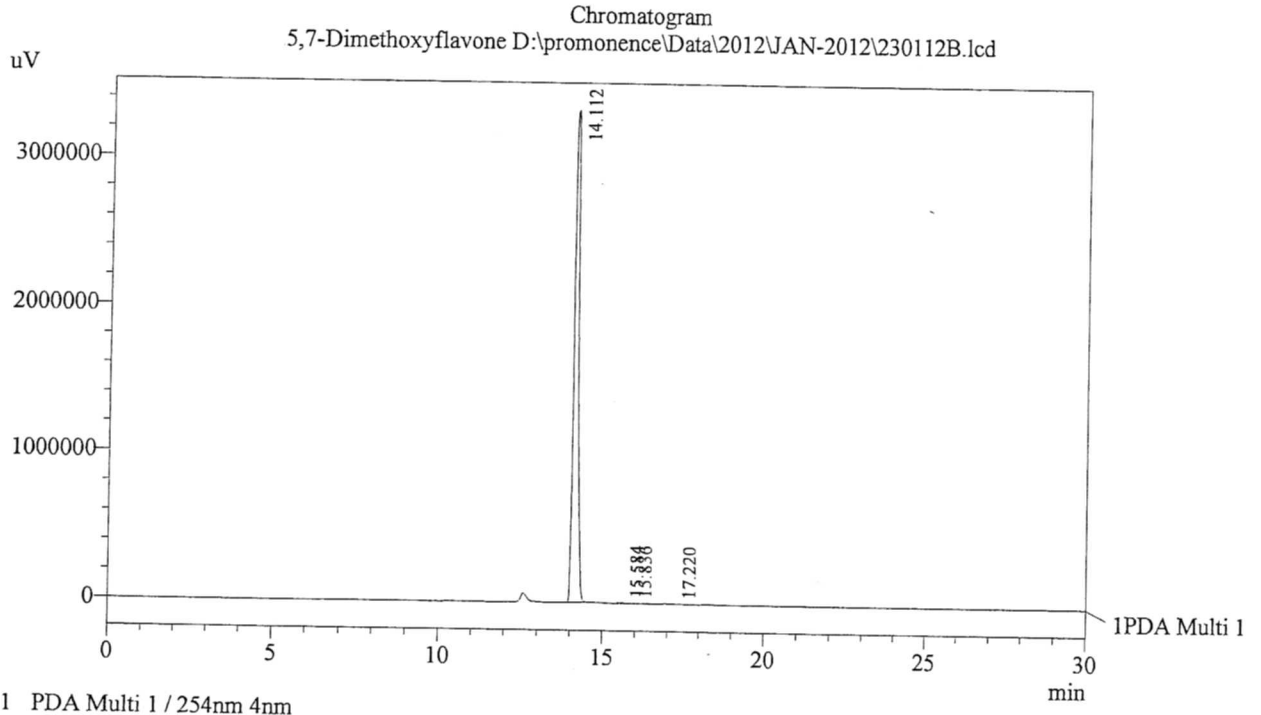
website: www.indofinechemical.com

e-mail: chemical@indofinechemical.com

HPLC ANALYSIS

Acquired by	: Sanjeev	Catalog No.:	021010
Sample Name	: 5,7-Dimethoxyflavone	Product name:	Methylated Chrysin
Sample ID	: 13 Kgs Lot	Lot No.:	1202190
Injection Volume	: 20 uL		
Data Filename	: 230112B.lcd		
Method Filename	: Linear Gradient.M.lcm		

Date Acquired	: 1/23/2012 1:09:50 PM
Data Processed	: 1/23/2012 2:21:51 PM
Column	: LUNA C-18(2), (250mm x4.6mm 5.0μ)
Flow	: 1.000 mL/min.
Mobile Phase	: A(0.05% TFA in water) B(Acetonitrile)
	0.01 90 10
	12.0 10 90
	25.0 10 90
	28.0 90 10
	30.0 90 10



1 PDA Ch1 254nm 4nm

PeakTable

Peak#	Name	Ret. Time	Area	Area %	Relative Retention Time
1	RT:14.112	14.112	33559397	99.87	1.00
2	RT:15.584	15.584	31198	0.09	1.10
3	RT:15.836	15.836	4737	0.01	1.12
4	RT:17.220	17.220	9333	0.03	1.22
Total			33604665	100.00	



INDOFINE Chemical Company, Inc.
121 STRYKER LANE
BLDG. 30, SUITE 1
HILLSBOROUGH, NJ 08844

R-21750
ME-CHRYSN-13K
1H IN CDCL3
AVANCE-300

Catalog No.: 021010
Product name: Methylated Chrysin
Lot No.: 1202190

