



INDOFINE Chemical Company, Inc.

121 Stryker Lane, Bldg. 30, Suite 1 • Hillsborough, NJ 08844 • U.S.A.

Phone: (908) 359-6778 • FAX: (908) 359-1179

website: www.indofinechemical.com

e-mail: chemical@indofinechemical.com

CERTIFICATE OF ANALYSIS

Cat No.: 021010

Product: **5,7-DIMETHOXYFLAVONE**
(Methylated Chrysin; Chrysin dimethyl ether)

CAS No.: [21392-57-4]

Lot Number: 1106138

Molecular Formula: C₁₇H₁₄O₄

Molecular Weight: 282.3

Melting Point: 152-154°C

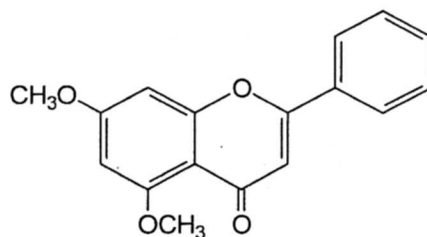
Moisture: 0.56

Appearance: Off white powder

TLC: Chloroform : Methanol (9.5:0.5)

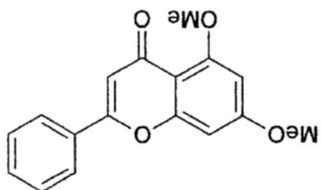
Solubility: Soluble in Chloroform

Purity (HPLC): 99.2%



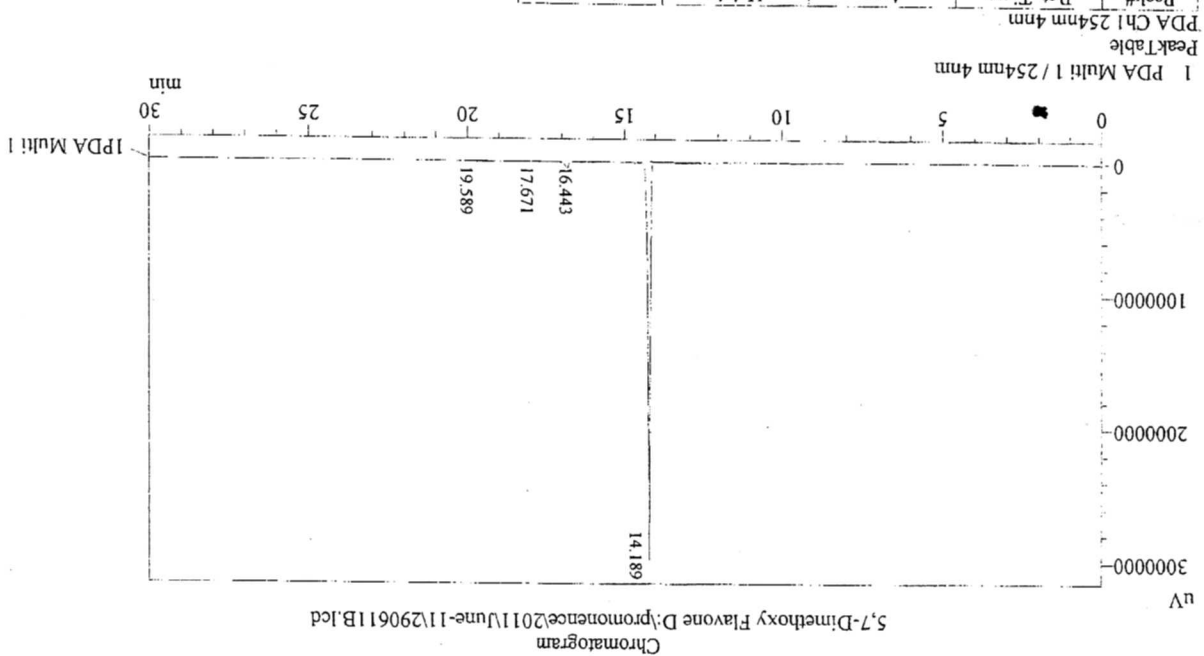
HPLC ANALYSIS

Cat. No.: 021010
 Product name: 5,7-Dimethoxyflavone
 (Methylated Chrysin)
 Lot No.: 1106138



5,7-Dimethoxy flavone

Date Acquired: 6/29/2011 12:30:26 PM
 Acquired by: Rama Krishna
 Sample Name: 5,7-Dimethoxy Flavone
 Sample ID: 3.9kg
 Injection Volume: 20 uL
 Data Filename: 290611B.lcd
 Method Filename: Linear Gradient.M.lcm
 Description:
 Column: Phenomenex C-18, 250X4.6mm 5.0µm
 Flow: 1.000ML/min.
 Mobile Phase: A(Water 0.05% TFA) : B(ACN)
 00.01 : 90 : 10
 12.00 : 10 : 90
 20.00 : 10 : 90
 25.00 : 90 : 10



Peak#	Ret. Time	Area	Height	Area %
1	14.189	15592527	2984010	99.272
2	16.443	27213	2459	0.173
3	17.671	16709	1957	0.106
4	19.589	70474	6707	0.449
Total		15706923	2995133	100.000

1 PDA Multi 1 / 254nm 4nm

PeakTable
 PDA Ch1 254nm 4nm



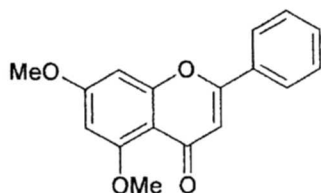
INDOFINE Chemical Company, Inc.

121 Stryker Lane, Bldg. 30, Suite 1 • Hillsborough, NJ 08844 • U.S.A.

Phone: (908) 359-6778 • FAX: (908) 359-1179

website: www.indofinechemical.com

e-mail: chemical@indofinechemical.com



5,7-Dimethoxy flavone

Cat. No.: 021010
Product name: 5,7-Dimethoxyflavone
(Methylated Chrysin)
Lot No.: 1106138

R.NO.21250
CRY/ME
1H IN CDCL3
AVANCE-300

