



# INDOFINE Chemical Company, Inc.

121 Stryker Lane, Bldg. 30, Suite 1 • Hillsborough, NJ 08844 • U.S.A.

Phone: (908) 359-6778 • FAX: (908) 359-1179

website: [www.indofinechemical.com](http://www.indofinechemical.com)

e-mail: [chemical@indofinechemical.com](mailto:chemical@indofinechemical.com)

## CERTIFICATE OF ANALYSIS

Catalog Number: 020979S

Product Name: **EPIGALLOCATECHIN with HPLC**  
(3,5,7,3',4',5'-Hexahydroxyflavan; Epigallocatechol)

Cas Number: [970-74-1]

Lot Number: 2004429

Chemical Formula: C<sub>15</sub>H<sub>14</sub>O<sub>7</sub>

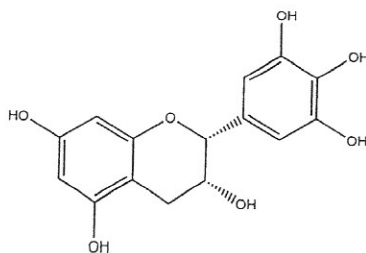
Molecular Weight: 306.27

Appearance: Off-white powder

Water Content: 0.7%

Purity(HPLC): 98.24%

Storage: Store at 2-8°C. Protect from light.



Prepared by:  
Ramesh Mandadi  
Ramesh Mandadi  
Director of Operations

Reviewed and Approved by:  
Sujata Moton  
Sujata Moton  
VP



# INDOFINE Chemical Company, Inc.

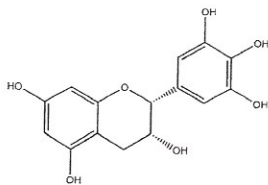
121 Stryker Lane, Bldg. 30, Suite 1 • Hillsborough, NJ 08844 • U.S.A.

Phone: (908) 359-6778 • FAX: (908) 359-1179

website: [www.indofinechemical.com](http://www.indofinechemical.com)

e-mail: [chemical@indofinechemical.com](mailto:chemical@indofinechemical.com)

## HPLC ANALYSIS



Catalog No.: 020979S

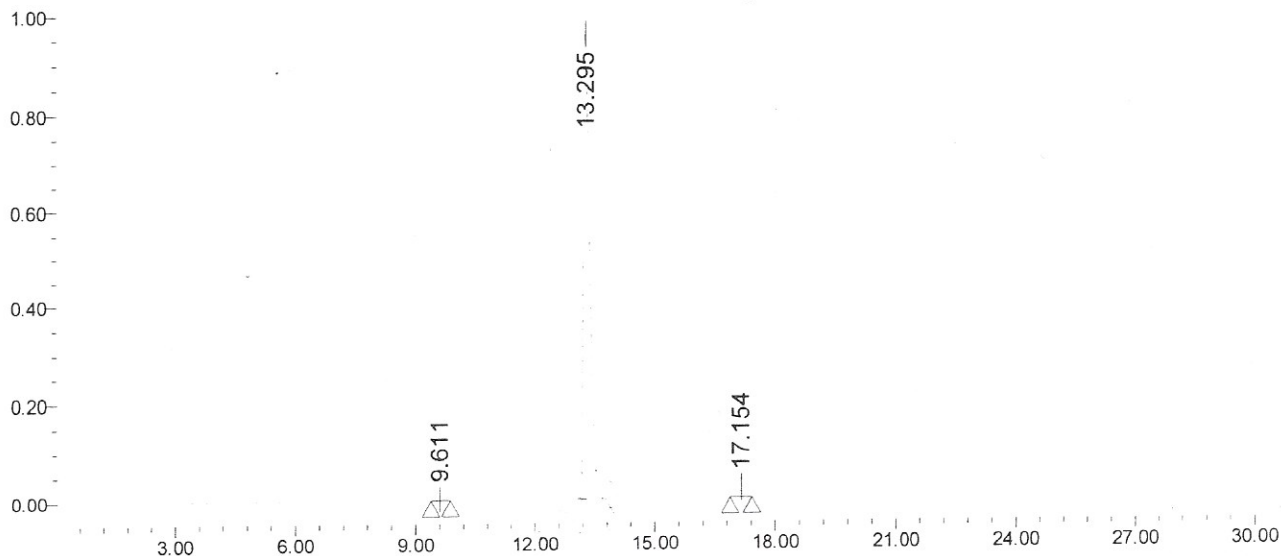
Product Name: (-)-Epigallocatechin

Lot No.: 2004429

### SAMPLE INFORMATION

Sample Name:	Epigallocatechin	Acquired By:	prf01
Sample Type:		Sample Set Name:	
Vial:	110	Acq. Method Set:	Epigallocatechin
Injection #:	1	Processing Method:	sample
Injection Volume:	10.00 ul	Channel Name:	270.0
Run Time:	30.0 Minutes	Proc. Chnl. Descr.:	PDA 270.0

### Auto-Scaled Chromatogram



### Peak Results

	RT	Area	% Area	USP	USP
1	9.611	11204	0.11	1146	32174.60
2	13.295	10415811	98.24	960883	11.88
3	17.154	175610	1.66	20047	14.38

Prepared by:  
*Ramesh Mandadi*  
 Ramesh Mandadi  
 Director of Operations

Reviewed and Approved by  
*Sujata Moton*  
 Sujata Moton  
 VP