



# INDOFINE Chemical Company, Inc.

121 Stryker Lane, Bldg. 30, Suite 1 • Hillsborough, NJ 08844 • U.S.A.

Phone: (908) 359-6778 • FAX: (908) 359-1179

website: [www.indofinechemical.com](http://www.indofinechemical.com)

e-mail: [chemical@indofinechemical.com](mailto:chemical@indofinechemical.com)

## CERTIFICATE OF ANALYSIS

Catalog Number: 020979S

Product Name: (-)-EPIGALLOCATECHIN with HPLC  
(3,5,7,3',4',5'-Hexahydroxyflavan; Epigallocatechol)

Cas Number: [970-74-1]

Lot Number: 1605830

Chemical Formula: C<sub>15</sub>H<sub>14</sub>O<sub>7</sub>

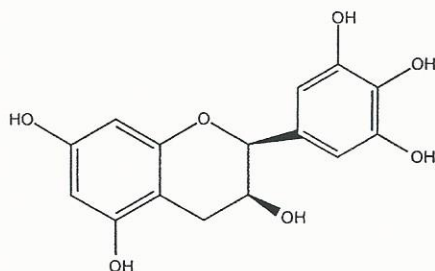
Molecular Weight: 306.27

Appearance: Off-white powder

Loss on drying: 2.0%

Purity(HPLC): 98.48%

Storage: Store in a cool, dry place. Protect from light.  
Store at 2-8°C.





# INDOFINE Chemical Company, Inc.

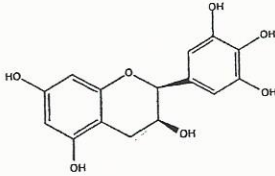
121 Stryker Lane, Bldg. 30, Suite 1 • Hillsborough, NJ 08844 • U.S.A.

Phone: (908) 359-6778 • FAX: (908) 359-1179

website: [www.indofinechemical.com](http://www.indofinechemical.com)

e-mail: [chemical@indofinechemical.com](mailto:chemical@indofinechemical.com)

## HPLC ANALYSIS

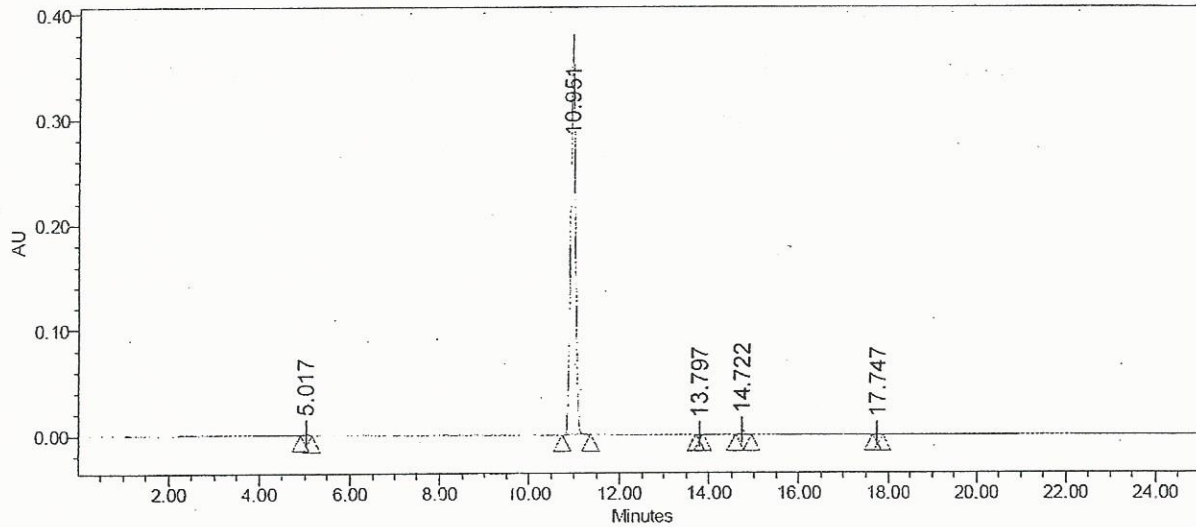


Catalog No.: 020979S  
Product Name: (-)-Epigallocatechin  
Lot No.: 1605830

### SAMPLE INFORMATION

Sample Name:	Epigallocatechin	Acquired By:	System
Sample Type:	Unknown	Sample Set Name:	Epigallocatechin 9 21
Vial:	76	Acq. Method Set:	Epigallocatechin
Injection #:	1	Processing Method:	Samples
Injection Volume:	20.00 ul	Channel Name:	270.0nm
Run Time:	25.0 Minutes	Proc. Chnl. Descr.:	PDA 270.0 nm

Auto-Scaled Chromatogram



#### Peak Results

	Name	RT	Area	% Area	USP Plate Count	USP Resolution
1		5.017	13180	0.47	16890.62	
2		10.951	2782023	98.48	44983.22	32.42
3		13.797	1580	0.06	154991.08	16.37
4		14.722	26449	0.94	123706.58	6.06
5		17.747	1761	0.06	185784.83	18.03