



# INDOFINE Chemical Company, Inc.

121 Stryker Lane, Bldg. 30, Suite 1 • Hillsborough, NJ 08844 • U.S.A.

Phone: (908) 359-6778 • FAX: (908) 359-1179

website: [www.indofinechemical.com](http://www.indofinechemical.com)

e-mail: [chemical@indofinechemical.com](mailto:chemical@indofinechemical.com)

## CERTIFICATE OF ANALYSIS

Catalog Number: 020979S

Product Name: **EPIGALLOCATECHIN with HPLC**  
(3,5,7,3',4',5'-Hexahydroxyflavan)

Cas Number: [970-74-1]

Lot Number: 1406472

Chemical Formula: C<sub>15</sub>H<sub>14</sub>O<sub>7</sub>

Molecular Weight: 306.27

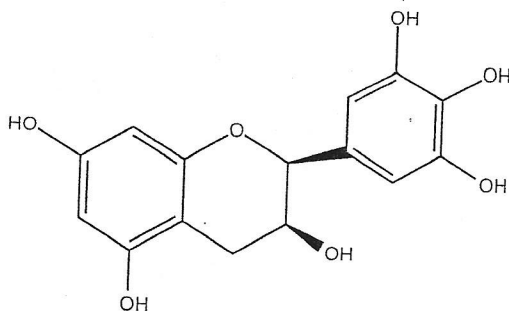
Appearance: Off-white powder

Botanical Source: Green Tea

Loss on drying: 1.3%

Purity(HPLC): 99.69%

Storage: Store in a cool, dry place. Protect from light.  
Store at 2-8°C



# INDOFINE Chemical Company, Inc.

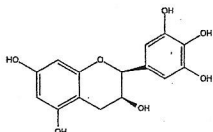
121 Stryker Lane, Bldg. 30, Suite 1 • Hillsborough, NJ 08844 • U.S.A.

Phone: (908) 359-6778 • FAX: (908) 359-1179

website: [www.indofinechemical.com](http://www.indofinechemical.com)

e-mail: [chemical@indofinechemical.com](mailto:chemical@indofinechemical.com)

## HPLC ANALYSIS



Catalog No.: 020979S

Product Name: (-)-Epigallocatechin with HPLC

Lot No.: 1406472

### SAMPLE INFORMATION

Sample Name: Epigallocatechin

Sample Type: Unknown

Vial: 1:C,2

Injection #: 1

Injection Volume: 8.00 ul

Run Time: 25.0 Minutes

Acquired By: System

Sample Set Name:

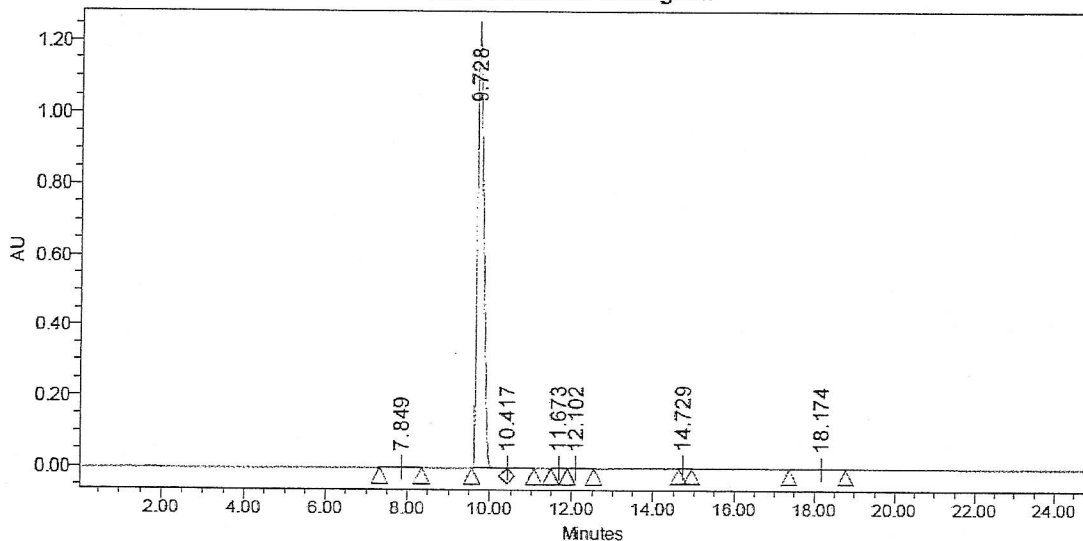
Acq. Method Set: Epigallocatechin

Processing Method: QC

Channel Name: 238.0nm

Proc. Chnl. Descr.: PDA 238.0 nm

Auto-Scaled Chromatogram



Peak Results

Name	RT	Area	% Area	USP Plate Count	USP Resolution
1	7.849	7676	0.06	31162.70	
2	9.728	12689704	99.69	17275.56	7.74
3	10.417	6669	0.05		2.32
4	11.673	1738	0.01	64429.82	5.19
5	12.102	2126	0.02	69904.96	2.20
6	14.729	9026	0.07	273074.30	16.71
7	18.174	11680	0.09	4629.58	2.94