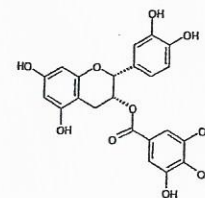




INDOFINE Chemical Company, Inc.

121 Stryker Lane, Building 30
Hillsborough, NJ 08844 USA

Phone: (908) 359-6778; Fax: (908) 359-1179



HPLC

Lot No.: 14091108

(-)-EPICATECHIN GALLATE

020978S

IDENTIFICATION

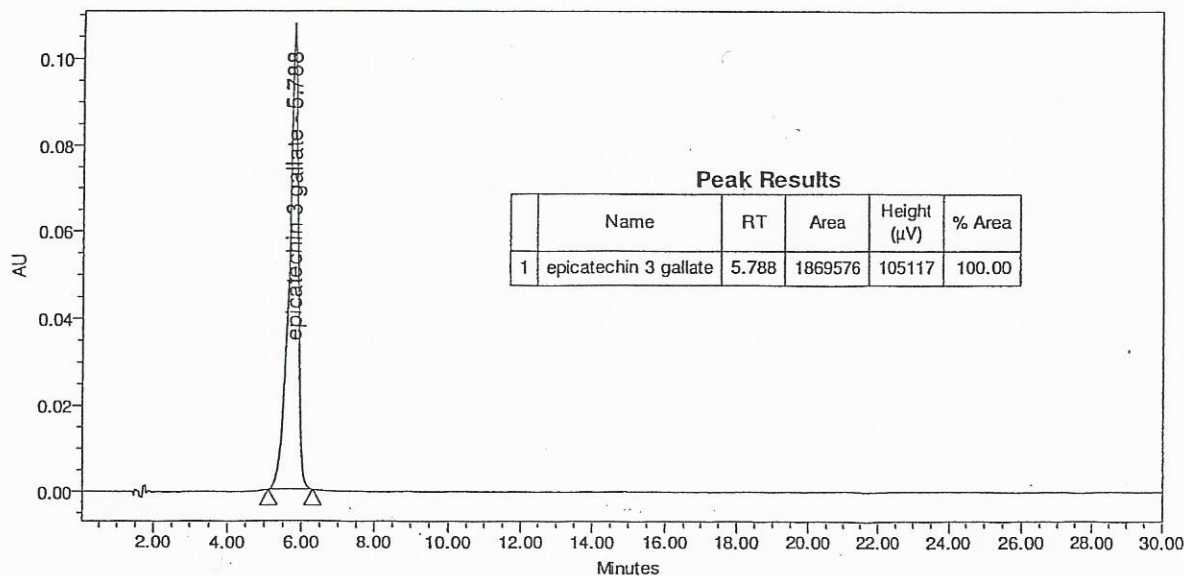
CAS number [1257-08-5]
Chemical family Catechins, Tannins
Molecular formula $C_{22}H_{18}O_{10}$
Molecular weight 442.37

CERTIFICATE OF ANALYSIS

Appearance White powder
Absorption maxima 279 nm in ethanol
Melting point 250°C
[α]_D -189° (c=0.2 in acetone)
Moisture 0.7%
Residual solvents <0.5%
Thin layer chromatography support Silicagel
solvent Ethylacetate/methylene chloride/formic acid (60/30/5, V/V/V)
detection p-Anisaldehyde/acetic acid/sulfuric acid (1/40/1, V/V/V) 10mm at 110°C
Storage Store at +2/+8°C in a dry and dark place. Place in a desiccator under vacuum before use.

HIGH PERFORMANCE LIQUID CHROMATOGRAPHY

Column Symmetry Shield RP18® (4.6 x 150 mm), particle size 3.5 μ m
Solvent Water/methanol/acetonitrile (65/25/10, V/V/V)
Flow rate 1 ml/min
Detector UV visible 280 nm
Sample solvent Ethanol



Assay by an HPLC method.

The values given on the 'Certificate of Analysis' are the results determined at the time of analysis.