

ICG **INDOFINE Chemical Company, Inc.**

121 Stryker Lane, Bldg. 30, Suite 1 • Hillsborough, NJ 08844 • U.S.A.

Phone: (908) 359-6778 • FAX: (908) 359-1179

website: www.indofinechemical.com

e-mail: chemical@indofinechemical.com

CERTIFICATE OF ANALYSIS

Catalog Number: 020915S

Product Name: **KUROMANIN CHLORIDE with HPLC**
(Cyanidin-3-O-glucoside chloride, Chrysanthemine)

Cas Number: [7084-24-4]

Lot Number: 1402419

Chemical Formula: C₂₁H₂₁O₁₁Cl

Molecular Weight: 484.84

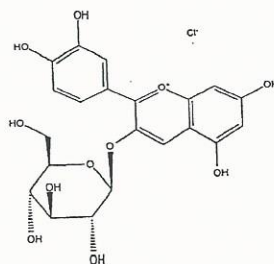
Appearance: Brown powder

Botanical Source: Black rice

Loss on Drying: 1.7%

Storage: Store at -15°C in a dry dark place, protected from light.
Keep package airproofed when not in use.

Purity(HPLC): 98.80%





INDOFINE Chemical Company, Inc.

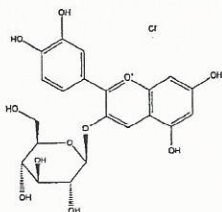
121 Stryker Lane, Bldg. 30, Suite 1 • Hillsborough, NJ 08844 • U.S.A.

Phone: (908) 359-6778 • FAX: (908) 359-1179

website: www.indofinechemical.com

e-mail: chemical@indofinechemical.com

HPLC ANALYSIS



Catalog No.: 020915S

Product Name: Kuromanin chloride with HPLC
(Cyanidin-3-O-glucoside chloride)

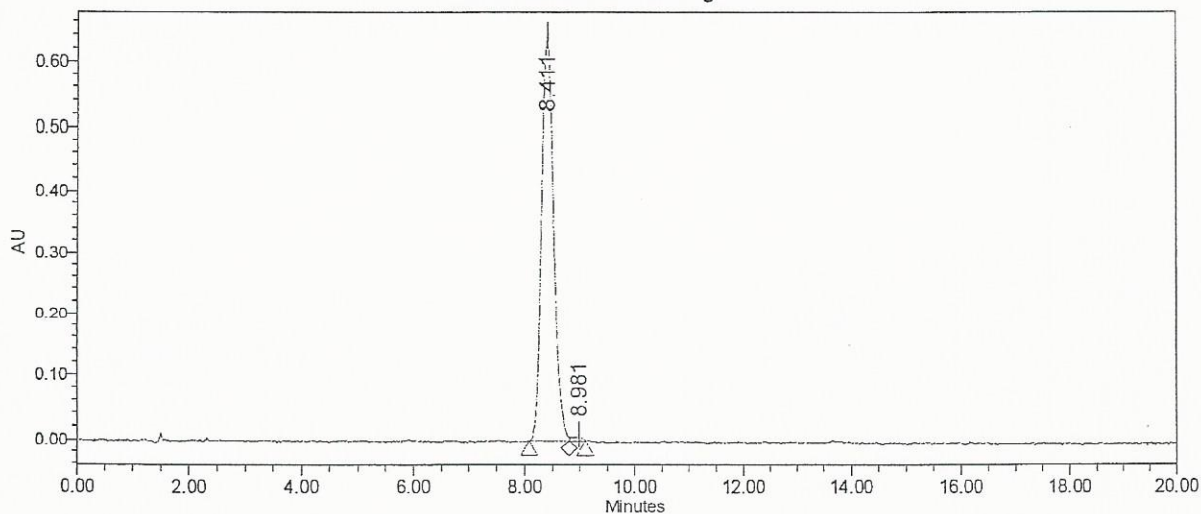
Lot No.: 1402419

SAMPLE INFORMATION

Sample Name: Chrysanthemim
Sample Type: Unknown
Vial: 1:A,1
Injection #: 1
Injection Volume: 10.00 ul
Run Time: 20.0 Minutes

Sample Set Name:
Acq. Method Set: Chrysanthemim
Processing Method: Samples
Channel Name: 520.0nm
Proc. Chnl. Descr.: PDA 520.0 nm

Auto-Scaled Chromatogram



Peak Results

Name	RT	Area	% Area	USP Plate Count	USP Resolution
1	8.411	9719917	98.80	7312.70	
2	8.981	118073	1.20		1.44