



# INDOFINE Chemical Company, Inc.

121 Stryker Lane, Bldg. 30  
Hillsborough, NJ 08844 USA  
Phone: (908) 359-6778; Fax: (908) 359-1179

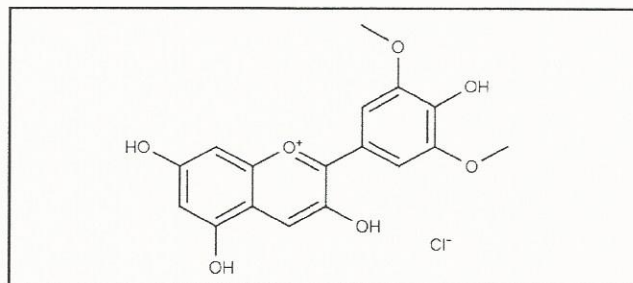
## Certificate Of Analysis

**020913S**

**MALVIDIN CHLORIDE**

**Lot No.: 18073131**

CAS RN	643-84-5
MOL FORMULA	C <sub>17</sub> H <sub>15</sub> O <sub>7</sub> Cl
MOL WEIGHT	366,75



TEST	METHOD	UNIT	SPECIFICATION	RESULT
Appearance	Visual		Dark powder	Conform
Potency	UV		$\epsilon$ (546 nm, MeOH+0,1% HCl) = 38 750 +/- 1500	39600
Water content	KF	% w/w		10,7
Residual solvents	GC-HS	% w/w		0,2
Inorganics	ICP-MS	% w/w		0,1
Purity	HPLC	% area	$\geq 97,0$	99,3
<b>Assay</b>	<b>Calculated (*)</b>	<b>% w/w</b>		<b>88,4</b>

(\*) Assay = Purity by HPLC x (100 - %water - %solvents - %inorganics)

### CHROMATOGRAPHIC PURITY / HPLC

Column : Atlantis dC18 - 4,6x150 mm - 3  $\mu$ m

Temperature : 30°C

Mobile phase :

Gradient: B from 5% to 60% in 20 min then 60% to 100% in 5 min then 5 min isocratic 100%

Flow rate : 1 ml/min

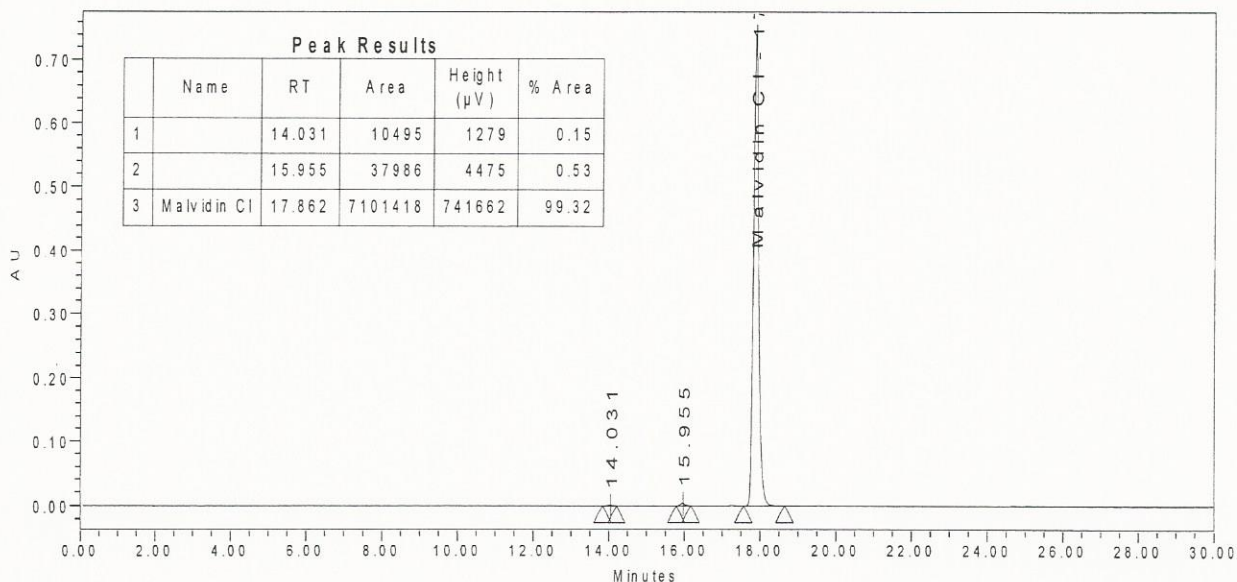
A = Water + 10% HCOOH / B = MeOH

Injection volume : 5  $\mu$ l

Detection :

UV 540 nm

Injection solvent : MeOH + 0,1% HCl



LONG TERM STORAGE : Below -15°C in a dry and dark place