



INDOFINE Chemical Company, Inc.

121 Stryker Lane, Bldg. 30, Suite 1 • Hillsborough, NJ 08844 • U.S.A.

Phone: (908) 359-6778 • FAX: (908) 359-1179

website: www.indofinechemical.com

e-mail: chemical@indofinechemical.com

CERTIFICATE OF ANALYSIS

Catalog Number: 020536S

Product Name: **ISOPIMPINELLIN with HPLC**

CAS Number: [482-27-9]

Lot Number: 1403449

Chemical Formula: C₁₃H₁₀O₅

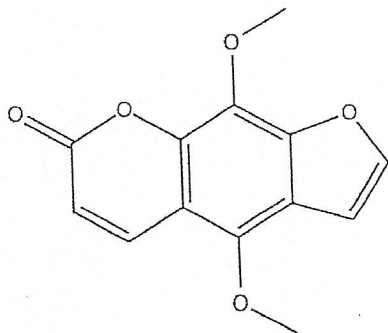
Molecular Weight: 246.22

Appearance: Pale yellow powder

Loss on drying: 0.9%

Storage: Store in a cool, dry place. Protected from light.

Purity(HPLC): 99.65%





INDOFINE Chemical Company, Inc.

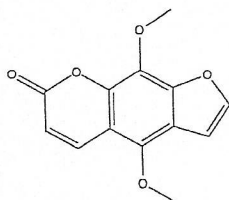
121 Stryker Lane, Bldg. 30, Suite 1 • Hillsborough, NJ 08844 • U.S.A.

Phone: (908) 359-6778 • FAX: (908) 359-1179

website: www.indofinechemical.com

e-mail: chemical@indofinechemical.com

HPLC ANALYSIS

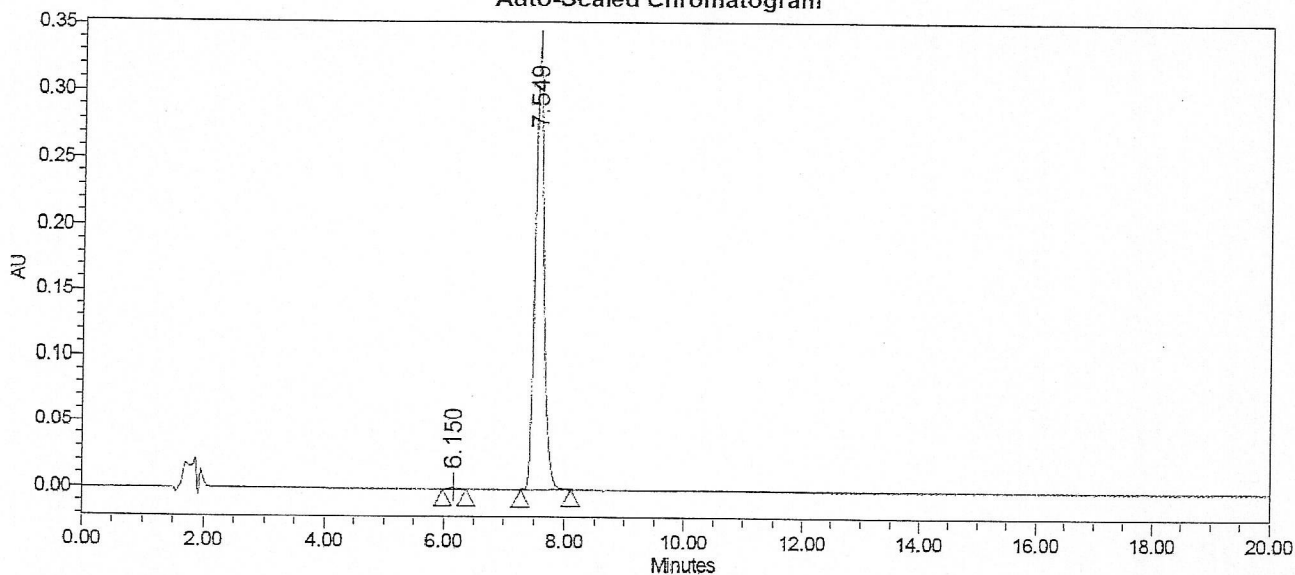


Catalog No.: 020536S
Product Name: Isopimpinellin with HPLC
Lot No.: 1403449

SAMPLE INFORMATION

Sample Name:	Isopimpinellin	Sample Set Name:	
Sample Type:	Unknown	Acq. Method Set:	Isopimpinellin
Vial:	1:D,6	Processing Method:	Samples 3
Injection #:	1	Channel Name:	268.0nm
Injection Volume:	12.00 ul	Proc. Chnl. Descr.:	PDA 268.0 nm
Run Time:	20.0 Minutes		

Auto-Scaled Chromatogram



Peak Results

Name	RT	Area	% Area	USP Plate Count	USP Resolution
1	6.150	11791	0.35	10475.56	
2	7.549	3314371	99.65	14103.12	5.73