



INDOFINE Chemical Company, Inc.

121 Stryker Lane, Bldg. 30, Suite 1 • Hillsborough, NJ 08844 • U.S.A.

Phone: (908) 359-6778 • FAX: (908) 359-1179

website: www.indofinechemical.com

e-mail: chemical@indofinechemical.com

CERTIFICATE OF ANALYSIS

Cat No.: 020504

Product: **PSORALEN**
(Ficusin)

CAS Number: [66-97-7]

Lot Number: 1201189

Chemical Formula: C₁₁H₆O₃

Molecular Weight: 186.16

Melting Point: 161-163°C

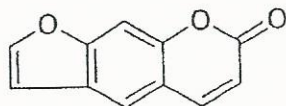
Appearance: Light cream color powder

TLC: Hexane:Ethyl acetate (7:3)

Solubility: Soluble in chloroform

Storage: Cool dry place

Purity(HPLC): 98.46%





INDOFINE Chemical Company, Inc.

121 Stryker Lane, Bldg. 30, Suite 1 • Hillsborough, NJ 08844 • U.S.A.

Phone: (908) 359-6778 • FAX: (908) 359-1179

website: www.indofinechemical.com

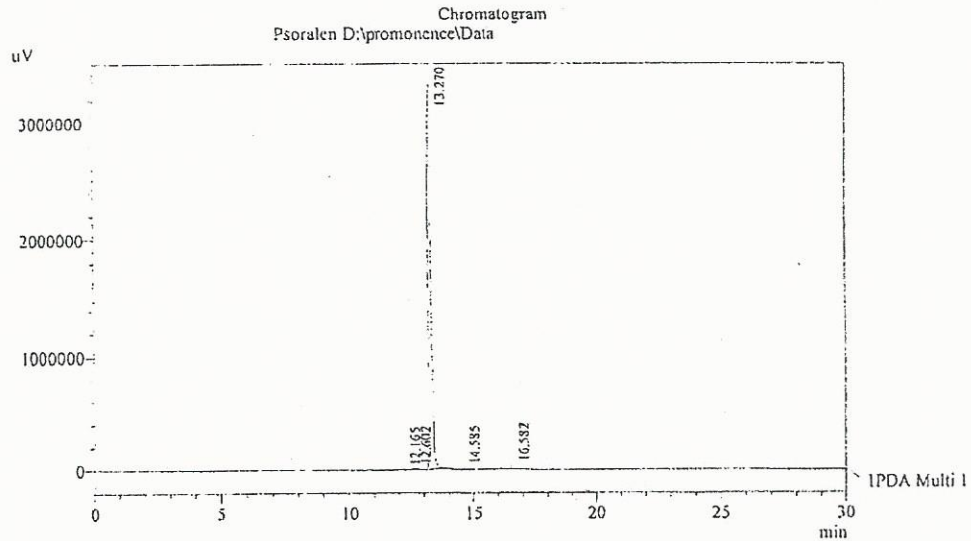
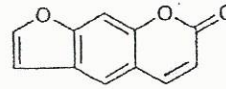
e-mail: chemical@indofinechemical.com

HPLC ANALYSIS

Acquired by : Sanjeev
Sample Name : Psoralen
Sample ID : Lot No:-1201189
Injection Volume : 20 uL
Data Filename : 140212G.lcd
Method Filename : Linear Grad nt.M.lcm

Catalog No.: 020504
Product name: Psoralen
Lot No.: 1201189

Column : LUNA C-18(2), (250mm x4.6mm 5.0µ)
Flow : 1.000 mL/min.
Mobile Phase : A(0.05% TFA in water) B(Acetonitrile)
0.01 90 10
12.0 10 90
20.0 10 90
25.0 90 10
30.0 90 10



1 PDA Multi 1 / 254nm 4nm

PeakTable

Peak#	Name	Ret. Time	Area	Area %	Relative Retention Time
1	RT:12.165	12.165	7273	0.02	0.92
2	RT:12.602	12.602	94927	0.32	0.95
3	RT:13.270	13.270	29521122	98.46	1.00
4	RT:14.585	14.585	72682	0.24	1.10
5	RT:16.582	16.582	283482	0.95	1.25
Total			29779486	100.00	



INDOFINE Chemical Company, Inc.

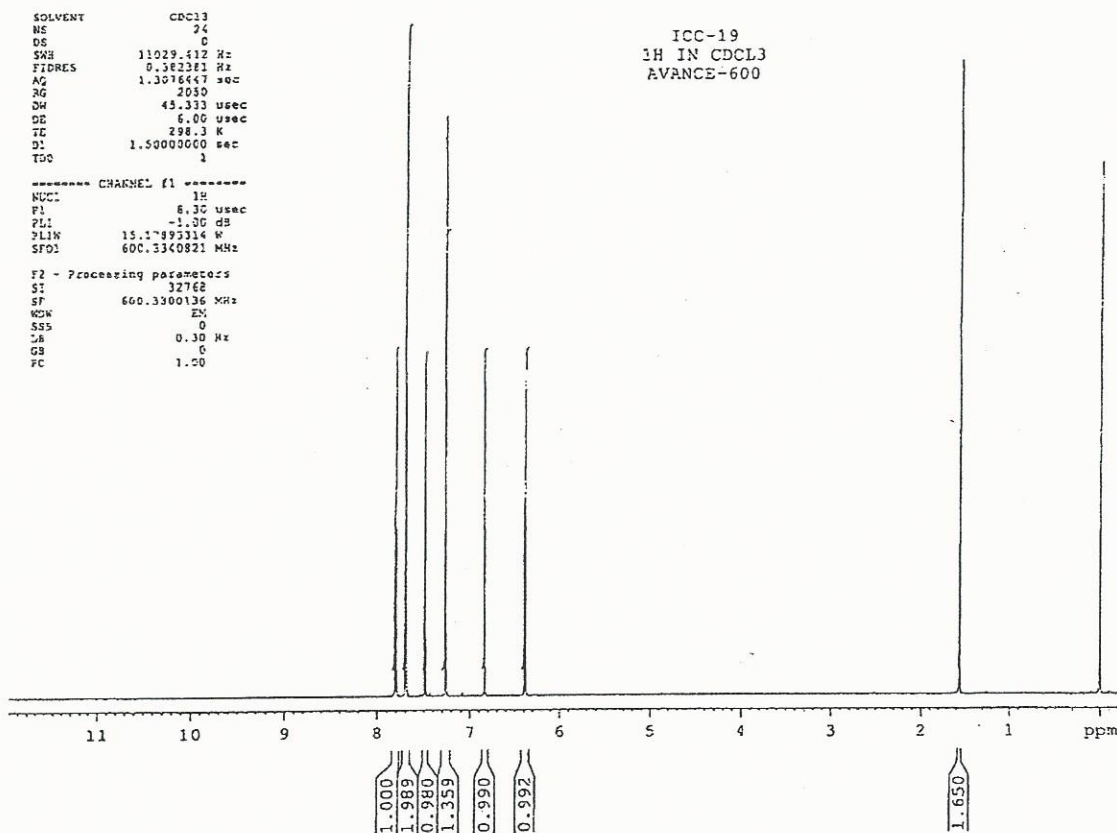
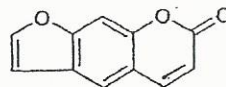
121 Stryker Lane, Bldg. 30, Suite 1 • Hillsborough, NJ 08844 • U.S.A.

Phone: (908) 359-6778 • FAX: (908) 359-1179

website: www.indofinechemical.com

e-mail: chemical@indofinechemical.com

Catalog No.: 020504
Product name: Psoralen
Lot No.: 1201189





INDOFINE Chemical Company, Inc.

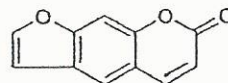
121 Stryker Lane, Bldg. 30, Suite 1 • Hillsborough, NJ 08844 • U.S.A.

Phone: (908) 359-6778 • FAX: (908) 359-1179

website: www.indofinechemical.com

e-mail: chemical@indofinechemical.com

Catalog No.: 020504
Product name: Psoralen
Lot No.: 1201189

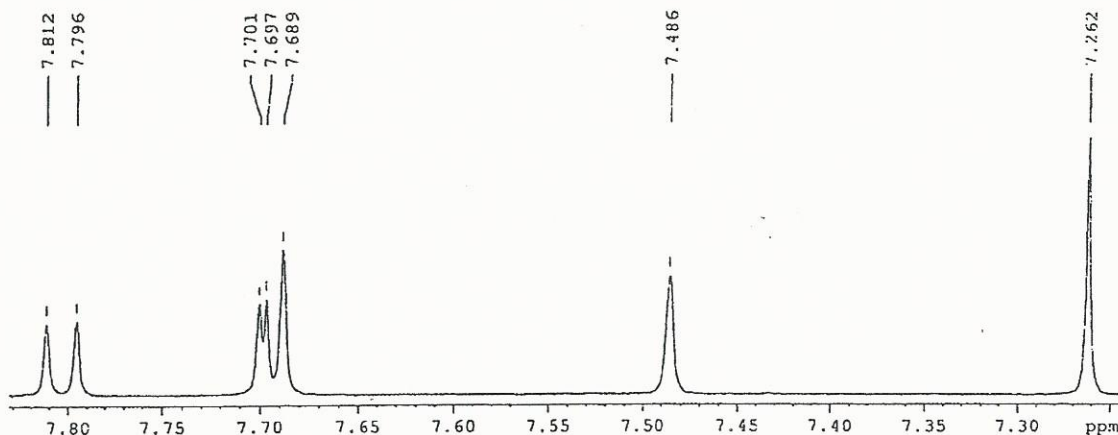


SOLVENT CDCl3
NS 24
DS 0
SWH 11029.412 Hz
FIDRES 0.382361 Hz
AQ 1.3076447 sec
RG 2050
DR 45.333 usec
DE 6.00 usec
ZE 289.3 K
D1 1.5000000 sec
D2 1

ICC-19
1H IN CDCL3
AVANCE-600

----- CHANNEL f1 -----
NUC1 1H
P1 5.30 usec
PL1 -1.00 dB
FL1W 15.17893314 K
SFO1 600.3300221 MHz

F2 - Processing parameters
SI 32768
SF 600.3300136 MHz
WDW EM
SSB 0
LS 0.30 Hz
GB 0
PC 1.00





INDOFINE Chemical Company, Inc.

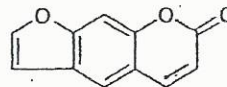
121 Stryker Lane, Bldg. 30, Suite 1 • Hillsborough, NJ 08844 • U.S.A.

Phone: (908) 359-6778 • FAX: (908) 359-1179

website: www.indofinechemical.com

e-mail: chemical@indofinechemical.com

Catalog No.: 020504
Product name: Psoralen
Lot No.: 1201189



SOLVENT CDCL3
NS 24
DS 0
SWH 11029.412 Hz
FIDRES 0.382361 Hz
AQ 1.3076447 sec
RG 2050
PX 45.333 usec
DE 8.00 usec
TE 298.3 K
D1 1.59000000 sec
TD0 1

ICC-19
1H IN CDCL3
AVANCE-600

----- CHANNEL f1 -----
NUC1 1H
P1 8.30 usec
PL1 -1.00 dB
PL1W 15.17893314 W
SFO: 600.3340821 MHz

F2 - Processing parameters
SI 32768
SF 600.3300136 MHz
WDW EM
SSB 0
LB 0.30 Hz
GB 0
PC 1.00

