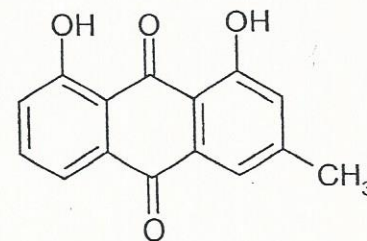




INDOFINE Chemical Company, Inc.

121 Stryker Lane, Building 30
Hillsborough, NJ 08844 USA
Phone: (908) 359-6778; Fax: (908) 359-1179



HPLC ANALYSIS

020452S CHRYSOPHANOL Lot No.: 11120206

IDENTIFICATION

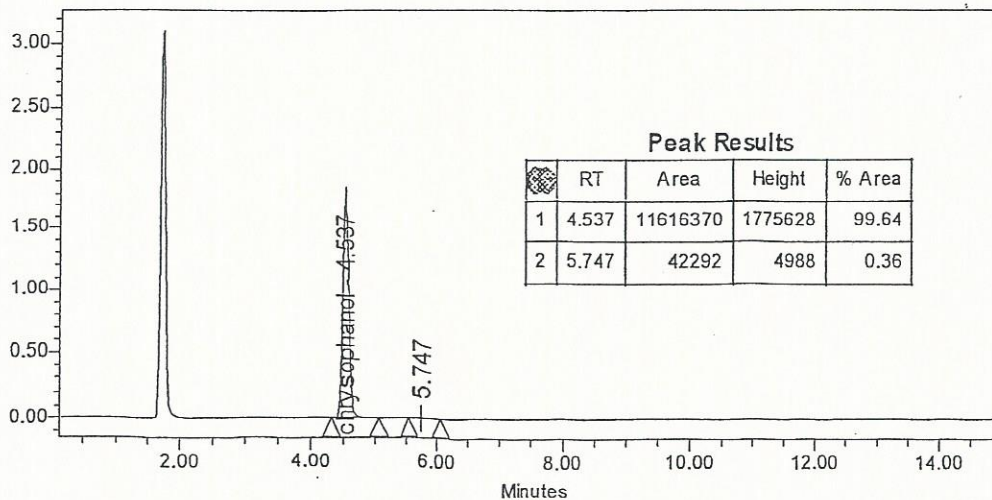
CAS number [481-74-3]
Chemical family Quinones-Anthraquinones
Synonym Chrysophanic acid
Molecular formula C₁₅H₁₀O₄
Molecular weight 254.24

CERTIFICATE OF ANALYSIS

Appearance Orange powder
Melting point 196-198°C
Thin layer chromatography support Silicagel
 solvent Hexane/methylene chloride(60/40, V/V)
 detection Visible
Absorption maxima 428.5 nm in methanol
Storage Store at room temperature in a dry and dark place. Place in a desiccator under vacuum for 48 hours before use

HIGH PERFORMANCE LIQUID CHROMATOGRAPHY

Column Symmetry Shield RP18® (4.6 x 150 mm), particle size 3.5 µm
Solvent Water + 5% acetic acid / methanol / acetonitrile (10/80/10 , V/V)
Flow rate 1 ml/min
Detector 254 nm
Sample solvent Methanol/acetone (15/5, V/V)



The values given on the 'Certificate of Analysis' are the results determined at the time of analysis.