



INDOFINE Chemical Company, Inc.

121 Stryker Lane, Bldg. 30, Suite 1 • Hillsborough, NJ 08844 • U.S.A.

Phone: (908) 359-6778 • FAX: (908) 359-1179

website: www.indofinechemical.com

e-mail: chemical@indofinechemical.com

CERTIFICATE OF ANALYSIS

Catalog Number: 020305S

Product Name: LYCOPENE with HPLC

Cas Number: [502-65-8]

Lot Number: 1712748

Chemical Formula: C₄₀H₅₆

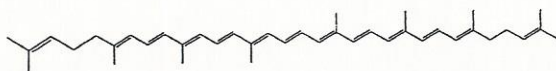
Molecular Weight: 536.89

Appearance: Red solid

Loss on Drying: 1.3%

Storage: Store at -20°C. Protect from light.

Purity(HPLC) 95.34%





INDOFINE Chemical Company, Inc.

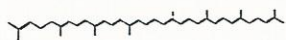
121 Stryker Lane, Bldg. 30, Suite 1 • Hillsborough, NJ 08844 • U.S.A.

Phone: (908) 359-6778 • FAX: (908) 359-1179

website: www.indofinechemical.com

e-mail: chemical@indofinechemical.com

HPLC ANALYSIS



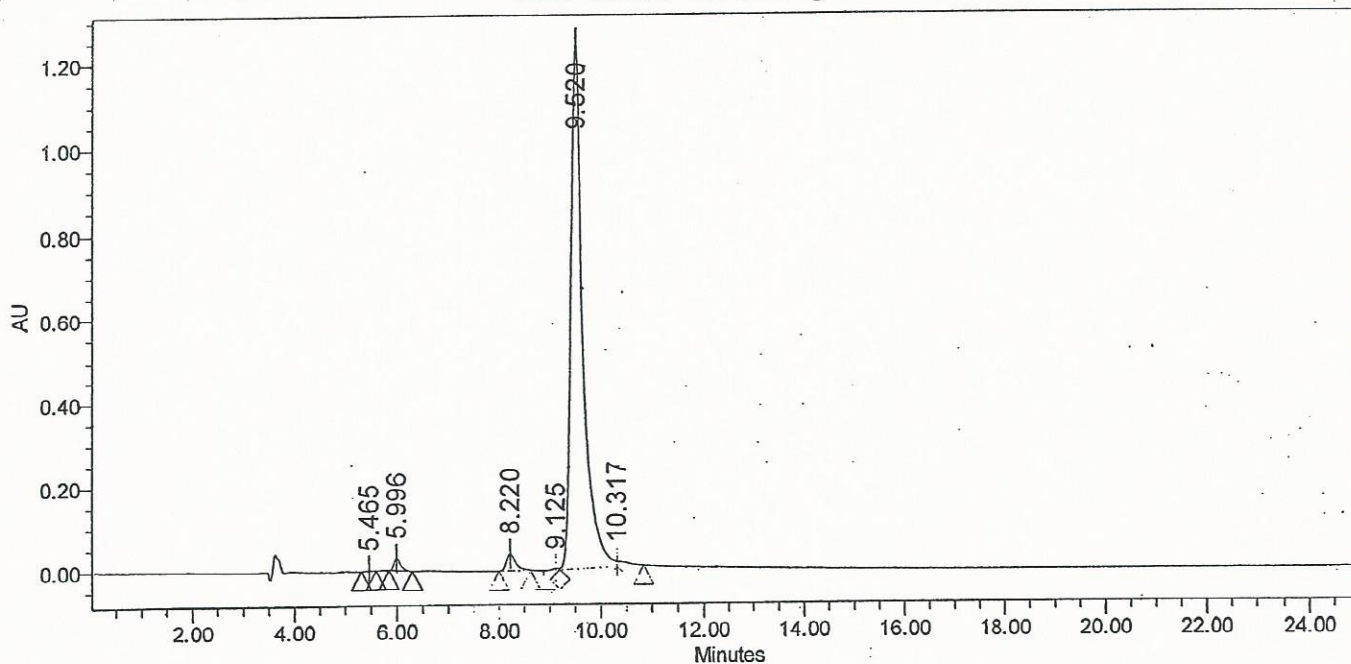
Catalog No.: 020305S
Product Name: Lycopene
Lot No.: 1712748

SAMPLE INFORMATION

Sample Name: Lycopene
Sample Type: Unknown
Vial: 33
Injection #: 2
Injection Volume: 10.00 ul
Run Time: 25.0 Minutes

Acquired By: System
Sample Set Name:
Acq. Method Set: Lycopene
Processing Method: Samples
Channel Name: 475.0nm
Proc. Chnl. Descr.: PDA 475.0 nm

Auto-Scaled Chromatogram



Peak Results

	Name	RT	Area	% Area	USP Plate Count	USP Resolution
1		5.465	14035	0.07	4973.23	
2		5.996	269803	1.27	10352.68	2.46
3		8.220	494227	2.33	11312.22	7.86
4		9.125	32624	0.15		2.84
5		9.520	20206430	95.34	10019.66	1.10
6		10.317	178041	0.84		1.99