



INDOFINE Chemical Company, Inc.

121 Stryker Lane, Bldg. 30, Suite 1 • Hillsborough, NJ 08844 • U.S.A.

Phone: (908) 359-6778 • FAX: (908) 359-1179

website: www.indofinechemical.com

e-mail: chemical@indofinechemical.com

CERTIFICATE OF ANALYSIS

Catalog Number: 020305S

Product Name: **LYCOPENE with HPLC**

Cas Number: [502-65-8]

Lot Number: 1606837

Chemical Formula: C₄₀H₅₆

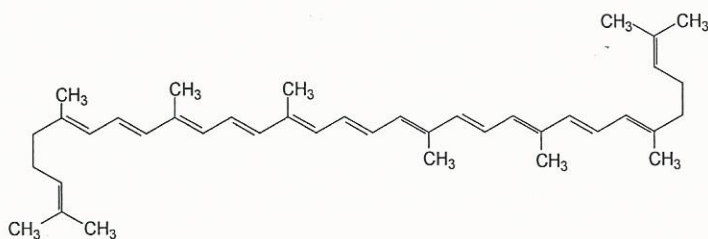
Molecular Weight: 536.89

Appearance: Reddish brown powder

Loss on Drying: 2.7%

Storage: Store at -20°C. Protect from light.

Purity(HPLC) 95.35%





INDOFINE Chemical Company, Inc.

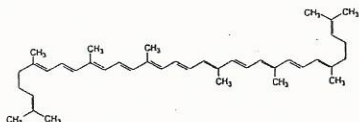
121 Stryker Lane, Bldg. 30, Suite 1 • Hillsborough, NJ 08844 • U.S.A.

Phone: (908) 359-6778 • FAX: (908) 359-1179

website: www.indofinechemical.com

e-mail: chemical@indofinechemical.com

HPLC ANALYSIS



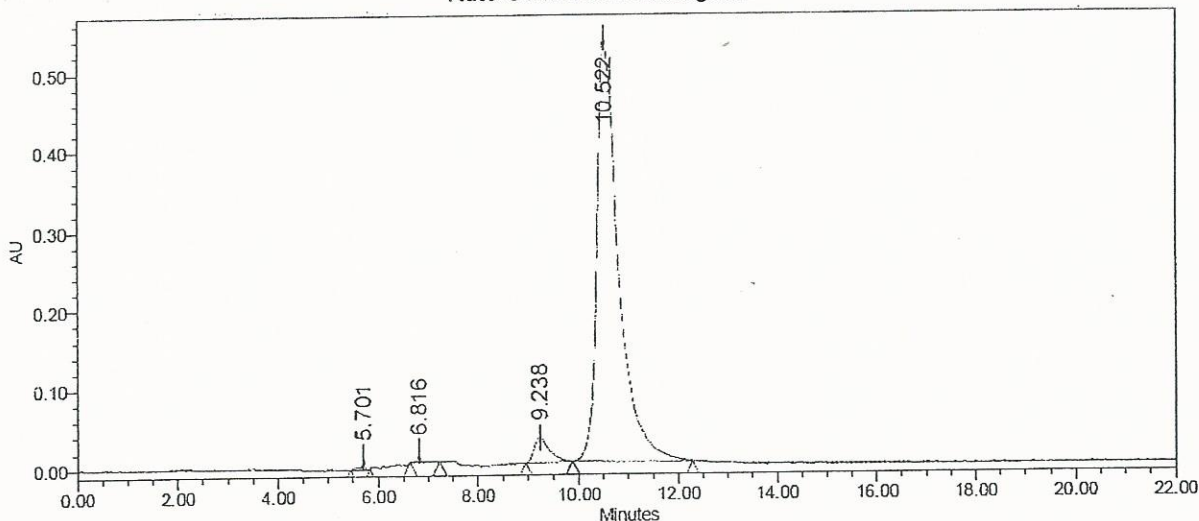
Catalog No.: 020305S
Product Name: Lycopene
Lot No.: 1606837

SAMPLE INFORMATION

Sample Name: Lycopene
Sample Type: Unknown
Vial: 1:C,1
Injection #: 1
Injection Volume: 10.00 ul
Run Time: 22.0 Minutes

Sample Set Name:
Acq. Method Set: Lycopene
Processing Method: Samples
Channel Name: 475.0nm
Proc. Chnl. Descr.: PDA 475.0 nm

Auto-Scaled Chromatogram



Peak Results

Name	RT	Area	% Area	USP Plate Count	USP Resolution
1	5.701	70883	0.42	75939.66	
2	6.816	51037	0.30	141100.90	14.50
3	9.238	664290	3.93	3445.44	7.62
4	10.522	16127643	95.35	4034.54	2.01