



INDOFINE Chemical Company, Inc.

121 Stryker Lane, Bldg. 30
Hillsborough, NJ 08844 USA
Phone: (908) 359-6778; Fax: (908) 359-1179

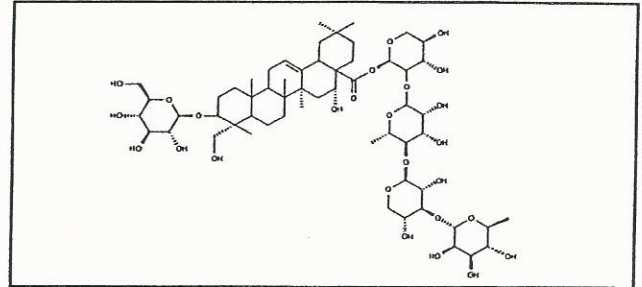
Certificate Of Analysis

020112S

CHRYSATHELLIN B

Lot No.: 16091605

CAS RN	74411-65-7
MOL FORMULA	C ₅₈ H ₉₄ O ₂₆
MOL WEIGHT	1207,37



TEST	METHOD	UNIT	SPECIFICATION	RESULT
Appearance	Visual		White to beige powder	Conform
Chirality	Optical rotation	°	$[\alpha]_D = -(44 \pm 4) c=0,4$ in MeOH, 20°C	- 48
Water content	KF	% w/w		1,5
Residual solvents	GC-HS	% w/w		< 0,1
Inorganics	ICP-MS	% w/w		0,3
Purity	HPLC	% area	≥ 97,0	99,1
Assay	Calculated (*)	% w/w		97,3

(*) Assay = Purity by HPLC x (100 - %water - %solvents - %inorganics)

CHROMATOGRAPHIC PURITY / HPLC

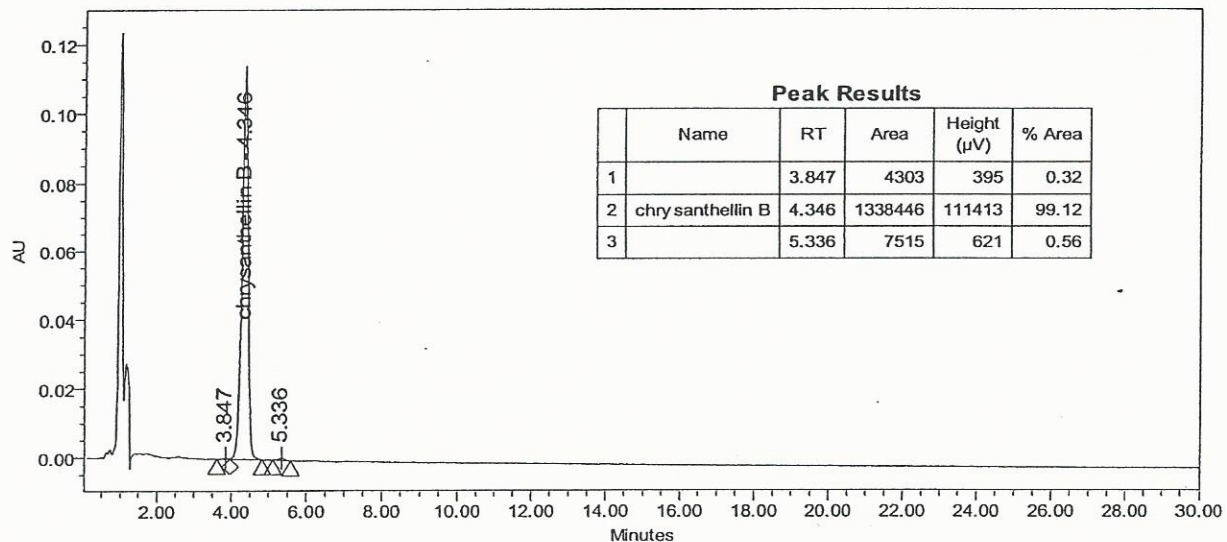
Column : Novapak C18 - 3,9x150 mm - 4µm
 Mobile phase : Water 70 / Acetonitrile 30 (v/v)
 Detection : UV 200 nm

Temperature : 30°C

Flow rate : 1 ml/min

Injection volume : 5 µl

Injection solvent: MeOH



LONG TERM STORAGE : Below 8°C in a dry and dark place