



INDOFINE Chemical Company, Inc.

121 Stryker Lane, Bldg. 30, Suite 1 • Hillsborough, NJ 08844 • U.S.A.

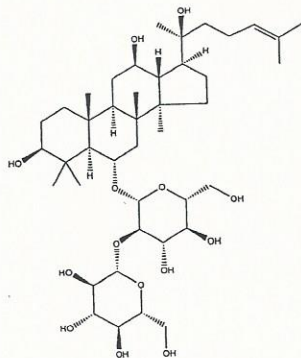
Phone: (908) 359-6778 • FAX: (908) 359-1179

website: www.indofinechemical.com

e-mail: chemical@indofinechemical.com

CERTIFICATE OF ANALYSIS

<u>Catalog Number:</u>	020107S
<u>Product Name:</u>	GINSENOSIDE Rf
<u>Cas Number:</u>	[52286-58-5]
<u>Lot Number:</u>	1708860
<u>Chemical Formula:</u>	$C_{42}H_{72}O_{14}$
<u>Molecular Weight:</u>	801.03
<u>Appearance:</u>	Off-white powder
<u>Loss on drying:</u>	1.8%
<u>Storage:</u>	This product is stable at ambient temperature for several weeks. However, optimum long-term storage may require lower temperature (<-18°C). Place in a desiccator under vacuum before use. Protect from light.
<u>Purity(HPLC):</u>	99.79%





INDOFINE Chemical Company, Inc.

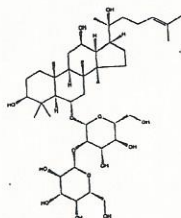
121 Stryker Lane, Bldg. 30, Suite 1 • Hillsborough, NJ 08844 • U.S.A.

Phone: (908) 359-6778 • FAX: (908) 359-1179

website: www.indofinechemical.com

e-mail: chemical@indofinechemical.com

HPLC ANALYSIS

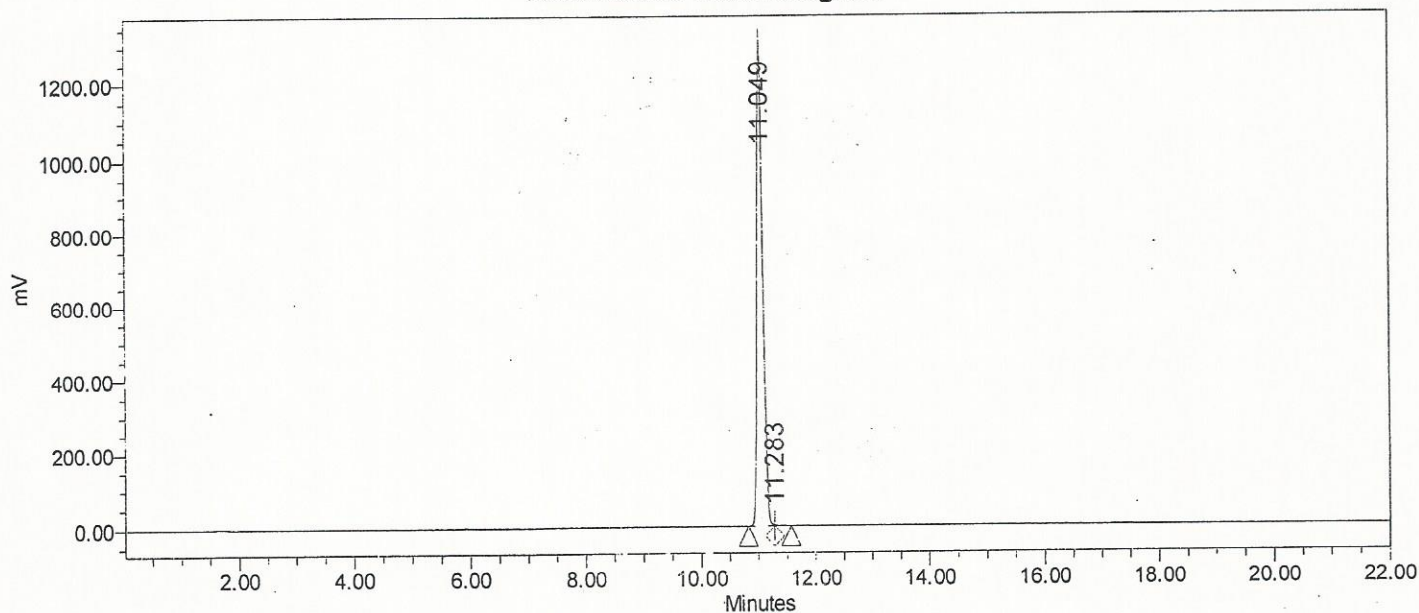


Catalog No.: 020107S
Product Name: Ginsenoside Rf
Lot No.: 1708860

SAMPLE INFORMATION

Sample Name:	Ginsenoside Rf	Acquired By:	System
Sample Type:	Unknown	Sample Set Name:	
Vial:	5	Acq. Method Set:	Ginsenoside Rf
Injection #:	1	Processing Method:	Samples
Injection Volume:	10.00 ul	Channel Name:	SATIN
Run Time:	22.0 Minutes	Proc. Chnl. Descr.:	

Auto-Scaled Chromatogram



Peak Results

Name	RT	Area	% Area	USP Plate Count	USP Resolution
1	11.049	9348843	99.79	53748.3	
2	11.283	19359	0.21		1.2