



# INDOFINE Chemical Company, Inc.

121 Stryker Lane, Bldg. 30, Suite 1 • Hillsborough, NJ 08844 • U.S.A.

Phone: (908) 359-6778 • FAX: (908) 359-1179

website: [www.indofinechemical.com](http://www.indofinechemical.com)

e-mail: [chemical@indofinechemical.com](mailto:chemical@indofinechemical.com)

## CERTIFICATE OF ANALYSIS

Catalog Number: 020104S

Product Name: **GINSENOSE Rb2 with HPLC**

Cas Number: [11021-13-9]

Lot Number: 1610900

Chemical Formula:  $C_{53}H_{90}O_{22}$

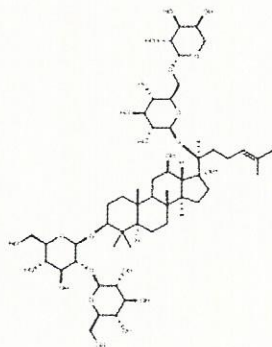
Molecular Weight: 1079.29

Appearance: White powder

Loss on drying: 1.3%

Storage: This product is stable at ambient temperature for several weeks. However, optimum long-term storage may require lower temperature ( $<-18^{\circ}C$ ). Place in a desiccator under vacuum before use. Protect from light.

Purity(HPLC): 99.75%





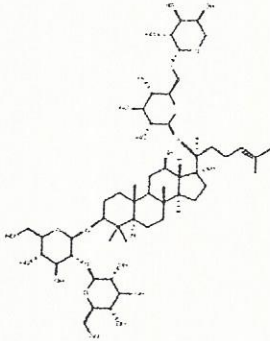
# INDOFINE Chemical Company, Inc.

121 Stryker Lane, Bldg. 30, Suite 1 • Hillsborough, NJ 08844 • U.S.A.

Phone: (908) 359-6778 • FAX: (908) 359-1179

website: [www.indofinechemical.com](http://www.indofinechemical.com)

e-mail: [chemical@indofinechemical.com](mailto:chemical@indofinechemical.com)



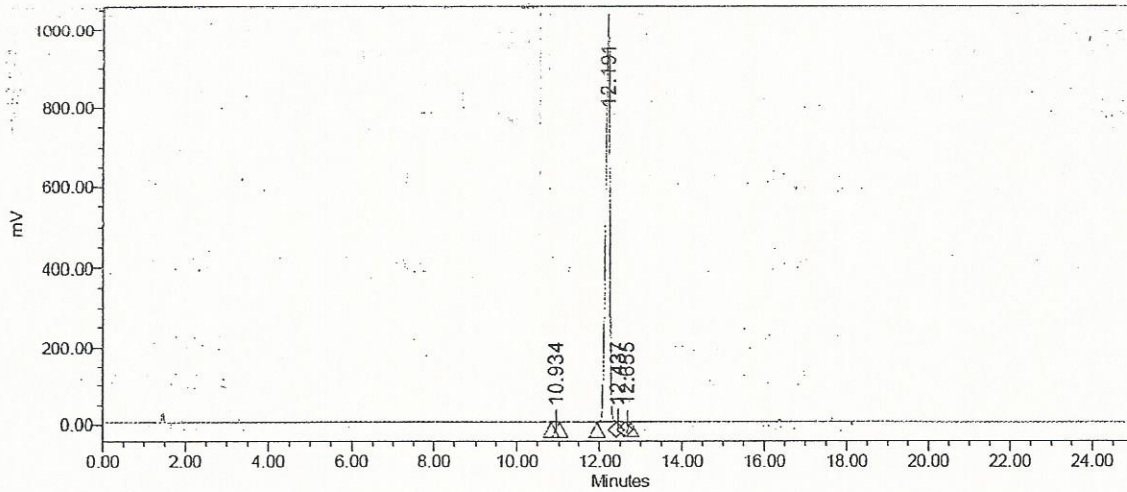
## HPLC ANALYSIS

Catalog No.: 020104S  
Product Name: Ginsenoside Rb2  
Lot No.: 1610900

### SAMPLE INFORMATION

Sample Name:	Ginsenoside Rb2	Acquired By:	System
Sample Type:	Unknown	Sample Set Name:	
Vial:	1:E,1	Acq. Method Set:	Ginsenoside Rb2
Injection #:	1	Processing Method:	Samples
Injection Volume:	10.00 ul	Channel Name:	SATIN
Run Time:	25.0 Minutes	Proc. Chnl. Descr.:	

Auto-Scaled Chromatogram



Peak Results

Name	RT	Area	% Area	USP Plate Count	USP Resolution
1	10.934	3112	0.04	109665.85	
2	12.191	7100217	99.75	70989.48	8.11
3	12.437	12651	0.18		1.32
4	12.655	1848	0.03	178222.14	