

**ICG** **INDOFINE Chemical Company, Inc.**

121 Stryker Lane, Bldg. 30, Suite 1 • Hillsborough, NJ 08844 • U.S.A.

Phone: (908) 359-6778 • FAX: (908) 359-1179

website: [www.indofinechemical.com](http://www.indofinechemical.com)

e-mail: [chemical@indofinechemical.com](mailto:chemical@indofinechemical.com)

**CERTIFICATE OF ANALYSIS**

Catalog Number: 020104S

Product Name: **GINSENOSE Rb2 with HPLC**

Cas Number: [11021-13-9]

Lot Number: 1411519

Chemical Formula:  $C_{53}H_{90}O_{22}$

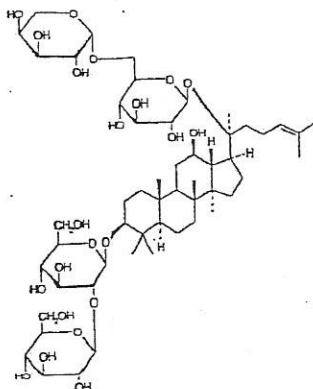
Molecular Weight: 1079.29

Appearance: White powder

Loss on drying: 1.3%

Storage: This product is stable at ambient temperature for several weeks. However, optimum long-term storage may require lower temperature (<-18°C). Place in a desiccator under vacuum before use. Protect from light.

Purity(HPLC): 99.94%





# INDOFINE Chemical Company, Inc.

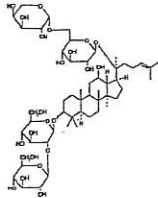
121 Stryker Lane, Bldg. 30, Suite 1 • Hillsborough, NJ 08844 • U.S.A.

Phone: (908) 359-6778 • FAX: (908) 359-1179

website: [www.indofinechemical.com](http://www.indofinechemical.com)

e-mail: [chemical@indofinechemical.com](mailto:chemical@indofinechemical.com)

## HPLC ANALYSIS

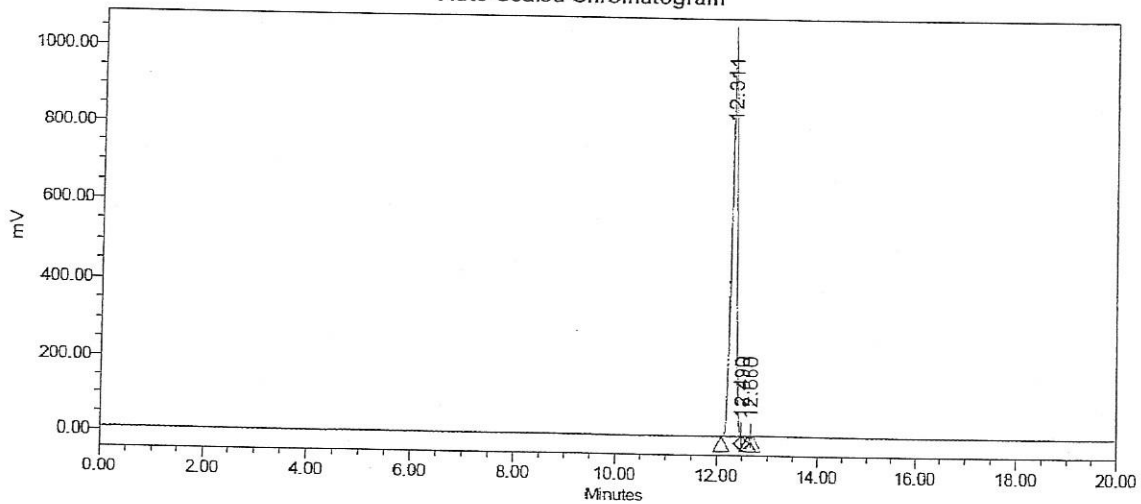


Catalog No.: 020104S  
Product Name: Ginsenoside Rb2  
Lot No.: 1411519

### SAMPLE INFORMATION

Sample Name:	Ginsenoside Rb2	Sample Set Name:	
Sample Type:	Unknown	Acq. Method Set:	Ginsenoside Rb2
Vial:	1:A,5	Processing Method:	Samples 3
Injection #:	1	Channel Name:	SATIN
Injection Volume:	15.00 $\mu$ l	Proc. Chnl. Descr.:	
Run Time:	20.0 Minutes		

Auto-Scaled Chromatogram



#### Peak Results

Name	RT	Area	% Area	USP Plate Count	USP Resolution
1	12.311	7361446	99.94	68484.24	
2	12.490	2964	0.04		0.93
3	12.660	1412	0.02	550758.59	1.31