



# INDOFINE Chemical Company, Inc.

121 Stryker Lane, Bldg. 30, Suite 1 • Hillsborough, NJ 08844 • U.S.A.

Phone: (908) 359-6778 • FAX: (908) 359-1179

website: [www.indofinechemical.com](http://www.indofinechemical.com)

e-mail: [chemical@indofinechemical.com](mailto:chemical@indofinechemical.com)

## CERTIFICATE OF ANALYSIS

Catalog Number: 020102S

Product Name: **GINSENSIDE Rd with HPLC**

Cas Number: [52705-93-8]

Lot Number: 1805970

Chemical Formula: C<sub>48</sub>H<sub>82</sub>O<sub>18</sub>

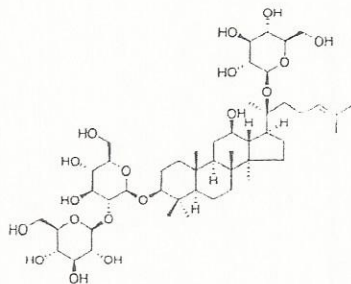
Molecular Weight: 947.17

Appearance: Off-white powder

Loss on drying: 1.52%

Storage: This product is stable at ambient temperature for several weeks. However, optimum long-term storage may require lower temperature (<-18°C). Place in a desiccator under vacuum before use. Protect from light.

Purity(HPLC): 99.94%



**Prepared by:**  
*Ramesh Mandadi*  
**Ramesh Mandadi**  
**Director of Operations**

**Reviewed and approved by:**  
*Sujata Moton*  
**S. Moton**  
**VP**



# INDOFINE Chemical Company, Inc.

121 Stryker Lane, Bldg. 30  
Hillsborough, NJ 08844 USA  
Phone: (908) 359-6778; Fax: (908) 359-1179

## HPLC ANALYSIS

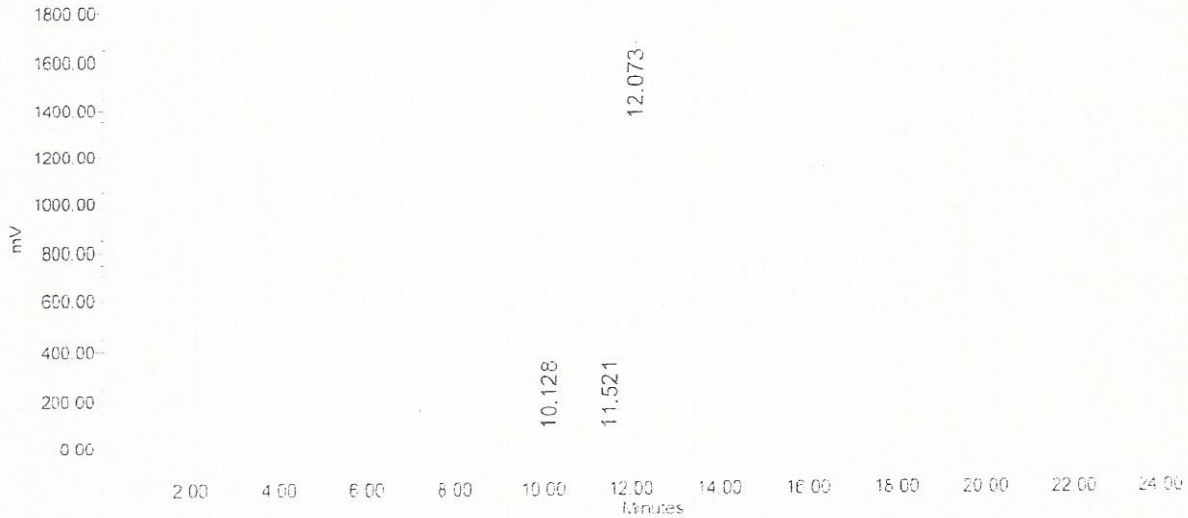


Catalog No.: 020102S  
Product Name: Ginsenoside Rd  
Lot No.: 1805970

### SAMPLE INFORMATION

|                   |                |                     |                |
|-------------------|----------------|---------------------|----------------|
| Sample Name:      | Ginsenoside Rd | Acquired By:        | System         |
| Sample Type:      | Unknown        | Sample Set Name:    |                |
| Vial:             | 101            | Acq. Method Set:    | Ginsenoside Rd |
| Injection #:      | 1              | Processing Method:  | Samples        |
| Injection Volume: | 10.00 ul       | Channel Name:       | SATIN          |
| Run Time:         | 25.0 Minutes   | Proc. Chnl. Descr.: |                |

Auto-Scaled Chromatogram



Peak Results

| Name | RT     | Area     | % Area | USP Plate Count | USP Resolution |
|------|--------|----------|--------|-----------------|----------------|
| 1    | 10.128 | 5287     | 0.04   | 27035.2         |                |
| 2    | 11.521 | 3424     | 0.02   | 92298.4         | 5.6            |
| 3    | 12.073 | 13522395 | 99.94  | 53803.5         | 2.4            |

Prepared by:  
*Ramesh Mandadi*  
Ramesh Mandadi  
Director of Operations

Reviewed and Approved by:  
*Sujata Moton*  
Sujata Moton  
VP