

# **INDOFINE Chemical Company, Inc.**

121 Stryker Lane, Bldg. 30, Suite 1 • Hillsborough, NJ 08844 • U.S.A.

Phone: (908) 359-6778 • FAX: (908) 359-1179

website: [www.indofinechemical.com](http://www.indofinechemical.com)

e-mail: [chemical@indofinechemical.com](mailto:chemical@indofinechemical.com)

## CERTIFICATE OF ANALYSIS

Catalog Number: 020102S

Product Name: **GINSENOSIDE Rd with HPLC**

Chemical Family: Saponins

Cas Number: [52705-93-8]

Lot Number: 1411521

Chemical Formula:  $C_{48}H_{82}O_{18}$

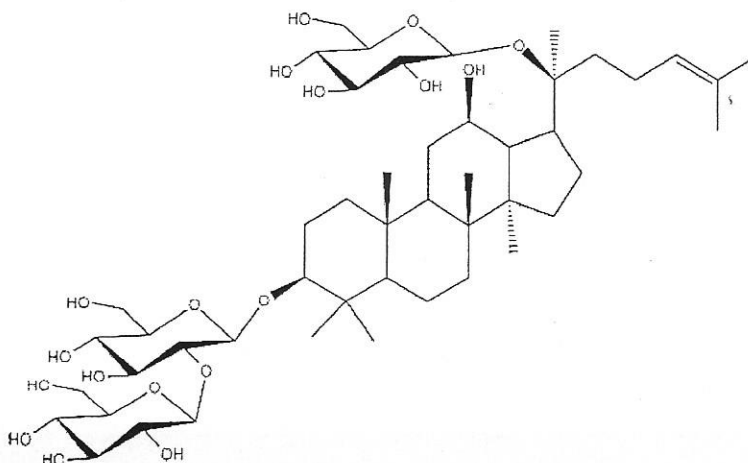
Molecular Weight: 947.17

Appearance: Off-White powder

Loss on drying: 0.8%

Storage: This product is stable at ambient temperature for several weeks. However, optimum long-term storage may require lower temperature ( $<-18^{\circ}\text{C}$ ). Place in a desiccator under vacuum before use. Protect from light.

Purity(HPLC): 99.20%



# **INDOFINE Chemical Company, Inc.**

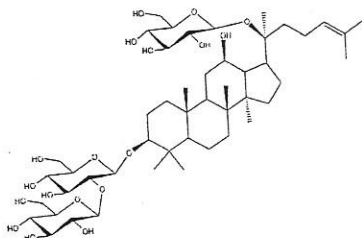
121 Stryker Lane, Bldg. 30, Suite 1 • Hillsborough, NJ 08844 • U.S.A.

Phone: (908) 359-6778 • FAX: (908) 359-1179

website: [www.indofinechemical.com](http://www.indofinechemical.com)

e-mail: [chemical@indofinechemical.com](mailto:chemical@indofinechemical.com)

## HPLC ANALYSIS

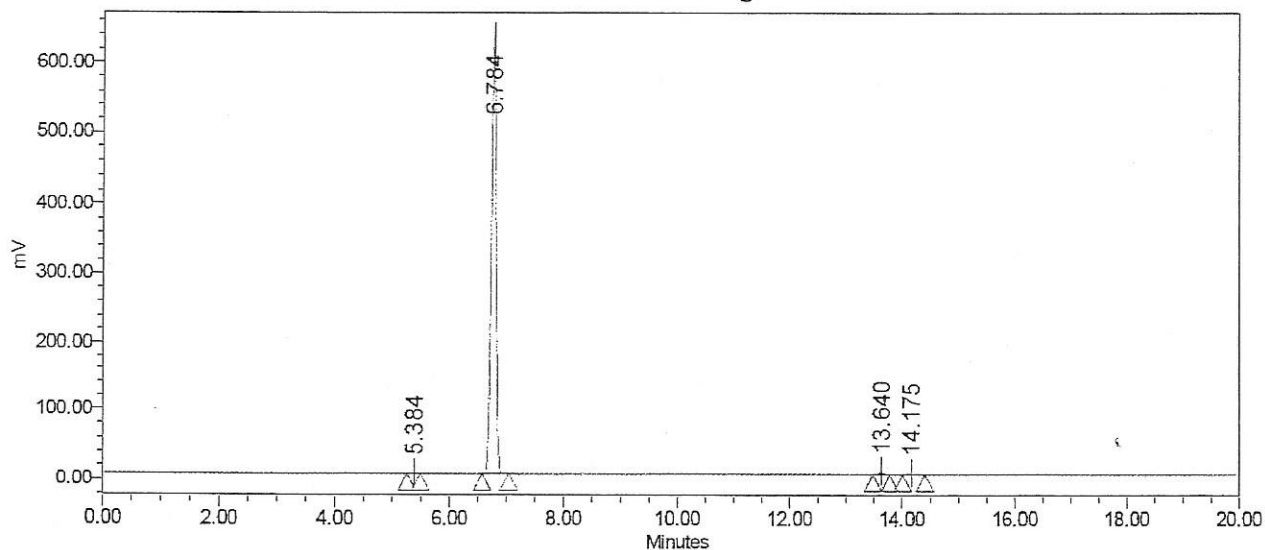


Catalog No.: 020102S  
Product Name: Ginsenoside Rd  
Lot No.: 1411521

### SAMPLE INFORMATION

Sample Name:	Ginsenoside Rd	Sample Set Name:	
Sample Type:	Unknown	Acq. Method Set:	Ginsenoside Rd
Vial:	1:C,1	Processing Method:	Samples
Injection #:	1	Channel Name:	SATIN
Injection Volume:	10.00 ul	Proc. Chnl. Descr.:	
Run Time:	20.0 Minutes		

Auto-Scaled Chromatogram



Peak Results

Name	RT	Area	% Area	USP Plate Count	USP Resolution
1	5.384	1991	0.05	38274.94	
2	6.784	3614286	99.20	31370.80	10.07
3	13.640	20577	0.56	121713.01	44.34
4	14.175	6497	0.18	73992.64	2.88