



INDOFINE Chemical Company, Inc.

121 Stryker Lane, Bldg. 30, Suite 1 • Hillsborough, NJ 08844 • U.S.A.

Phone: (908) 359-6778 • FAX: (908) 359-1179

website: www.indofinechemical.com

e-mail: chemical@indofinechemical.com

CERTIFICATE OF ANALYSIS

Catalog Number: 020053

Product Name: **LUTEOLIN-7-O-GLUCOSIDE**
(Luteoloside; Cinaroside; Cynaroside; Glucoluteolin)

CAS Number: [5373-11-5]

Lot Number: 1801899

Chemical Formula: $C_{21}H_{20}O_{11}$

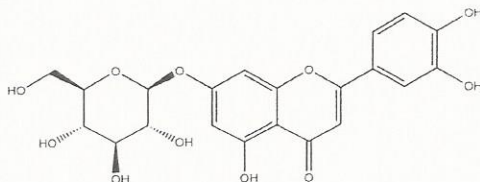
Molecular Weight: 448.38

Appearance: Yellow powder

Water Content: 2.76%

Storage: Store in a cool, dry place. Protect from light.

Purity(HPLC): 99.72%





INDOFINE Chemical Company, Inc.

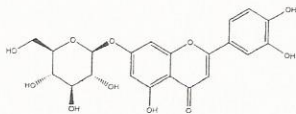
121 Stryker Lane, Bldg. 30, Suite 1 • Hillsborough, NJ 08844 • U.S.A.

Phone: (908) 359-6778 • FAX: (908) 359-1179

website: www.indofinechemical.com

e-mail: chemical@indofinechemical.com

HPLC ANALYSIS

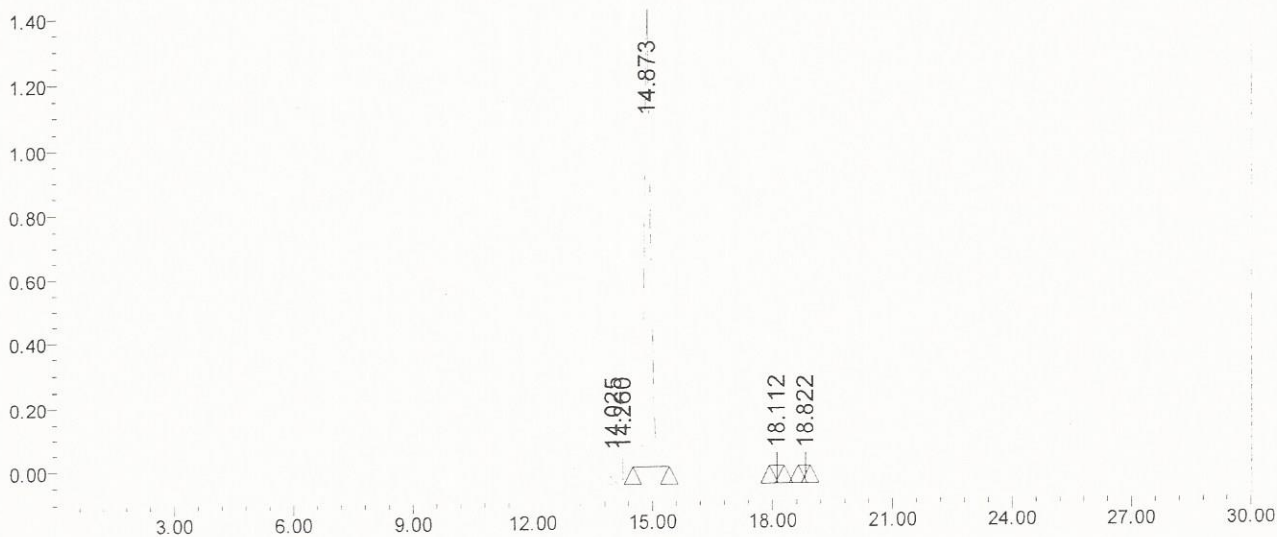


Catalog No.: 020053
Product Name: Luteolin-7-O-glucoside
Lot No.: 1801899

SAMPLE INFORMATION

Sample Name:	Luteoloside	Acquired By:	System
Sample Type:	Unknown	Sample Set Name:	
Vial:	35	Acq. Method Set:	Luteoloside
Injection #:	1	Processing Method:	sample
Injection Volume:	10.00 ul	Channel Name:	340.0nm
Run Time:	30.0 Minutes	Proc. Chnl. Descr.:	PDA 340.0 nm

Auto-Scaled Chromatogram



Peak Results

	RT	Area	% Area	USP Plate Count	USP Resolution
1	14.025	6144	0.04		
2	14.260	8219	0.06	45918.52	
3	14.873	13994912	99.72	47668.01	2.22
4	18.112	20150	0.14	85162.11	12.32
5	18.822	5125	0.04	64733.15	2.82