



INDOFINE Chemical Company, Inc.

121 Stryker Lane, Bldg. 30, Suite 1 • Hillsborough, NJ 08844 • U.S.A.

Phone: (908) 359-6778 • FAX: (908) 359-1179

website: www.indofinechemical.com

e-mail: chemical@indofinechemical.com

CERTIFICATE OF ANALYSIS

Catalog Number: 020053

Product Name: **LUTEOLIN-7-O-GLUCOSIDE**
(Luteoloside; Cynaroside)

CAS Number: [5373-11-5]

Lot Number: 1504580

Chemical Formula: C₂₁H₂₀O₁₁

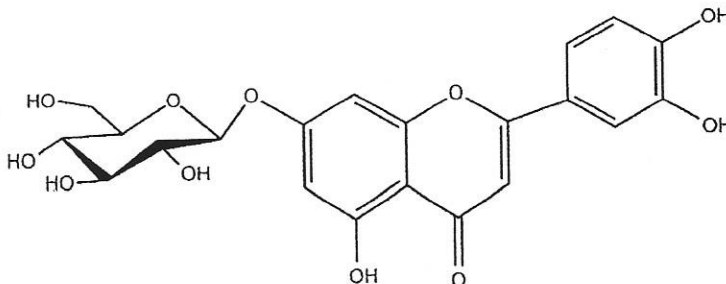
Molecular Weight: 448.38

Appearance: Khaki powder

Loss on drying: 1.2%

Storage: Store in a cool, dry place. Protect from light.

Purity(HPLC): 98.81%





INDOFINE Chemical Company, Inc.

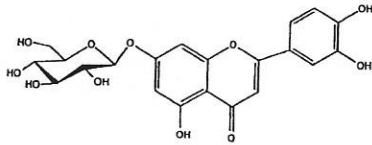
121 Stryker Lane, Bldg. 30, Suite 1 • Hillsborough, NJ 08844 • U.S.A.

Phone: (908) 359-6778 • FAX: (908) 359-1179

website: www.indofinechemical.com

e-mail: chemical@indofinechemical.com

HPLC ANALYSIS



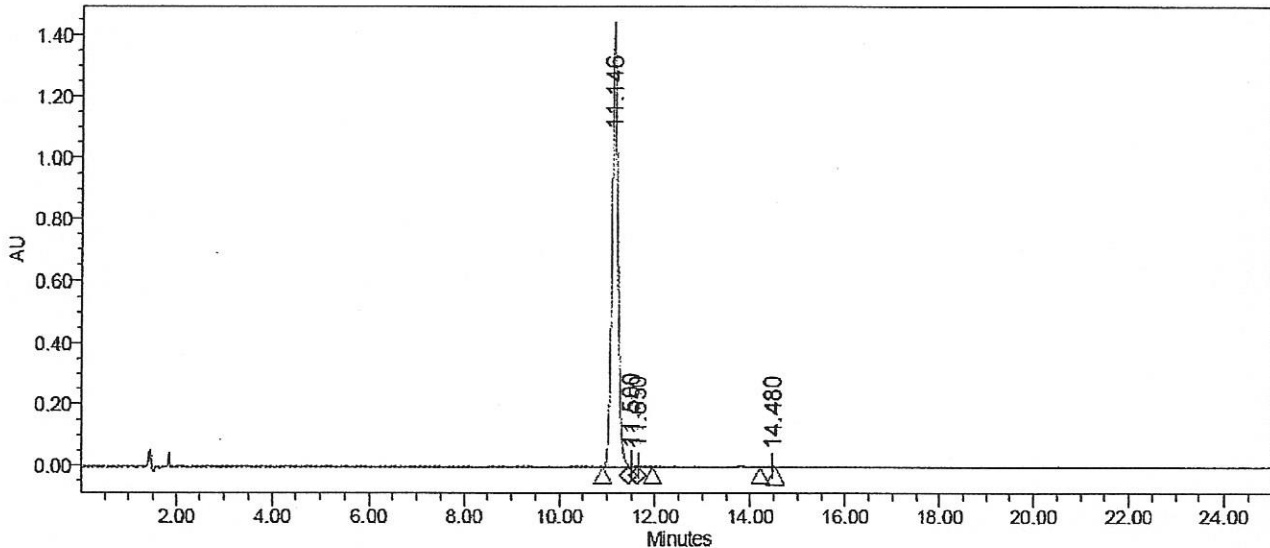
Catalog No.: 020053
Product Name: Luteolin-7-O-glucoside
Lot No.: 1504580

SAMPLE INFORMATION

Sample Name: Luteoloside
Sample Type: Unknown
Vial: 1:C,4
Injection #: 1
Injection Volume: 10.00 ul
Run Time: 25.0 Minutes

Sample Set Name:
Acq. Method Set: Luteoloside
Processing Method: Samples
Channel Name: 350.0nm
Proc. Chnl. Descr.: PDA 350.0 nm

Auto-Scaled Chromatogram



Peak Results

Name	RT	Area	% Area	USP Plate Count	USP Resolution
1	11.146	12028717	98.81	39471.73	
2	11.500	78727	0.65		1.54
3	11.650	29217	0.24	507604.03	
4	14.480	36628	0.30	25661.61	