



# INDOFINE Chemical Company, Inc.

121 Stryker Lane, Bldg. 30, Suite 1 • Hillsborough, NJ 08844 • U.S.A.

Phone: (908) 359-6778 • FAX: (908) 359-1179

website: [www.indofinechemical.com](http://www.indofinechemical.com)

e-mail: [chemical@indofinechemical.com](mailto:chemical@indofinechemical.com)

## CERTIFICATE OF ANALYSIS

Catalog Number: 01-1157

Product Name: **METHYL-4-METHOXYBENZOATE**  
(Methyl p-anisate)

CAS Number: [121-98-2]

Lot Number: 0304061

Chemical Formula: C<sub>9</sub>H<sub>10</sub>O<sub>3</sub>

Molecular Weight: 166.18

Melting Point: 49-50°C

Appearance: White shining powder

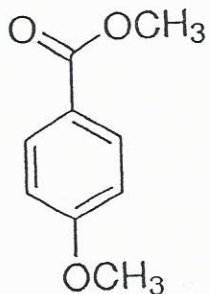
Solubility: Soluble in chloroform

TLC: n-Hexane:Ethyl acetate (7:3)

NMR Spectrum: Enclosed (conforms to the structure)

Storage: Store in a cool, dry place

Purity(HPLC): 99.37%





# INDOFINE Chemical Company, Inc.

121 Stryker Lane, Bldg. 30, Suite 1 • Hillsborough, NJ 08844 • U.S.A.

Phone: (908) 359-6778 • FAX: (908) 359-1179

website: [www.indofinechemical.com](http://www.indofinechemical.com)

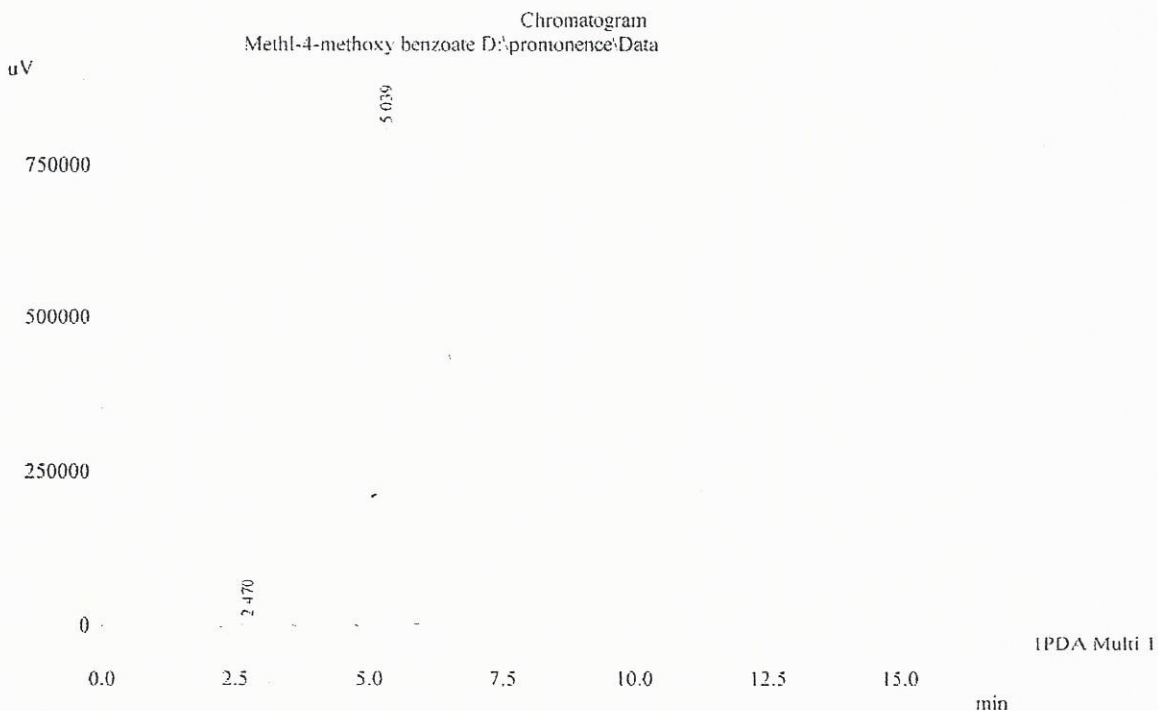
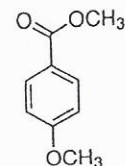
e-mail: [chemical@indofinechemical.com](mailto:chemical@indofinechemical.com)

## HPLC ANALYSIS

Acquired by : Admin  
Sample Name : Methyl-4-methoxy benzoate  
Sample ID : Lot No: 0304061  
Injection Volume : 20 uL  
Data Filename : 051015F.lcd  
Method Filename : Linear Isocratic.M.lcm

Catalog No.: 01-1157  
Product Name: Methyl 4-methoxybenzoate  
Lot No.: 0304061

Column : Gemini C-18(2), (250mm x4.6mm 5.0µ)  
Flow : 1.000 mL/min.  
Mobile Phase : A(30% of 0.05% TFA in water) B(70% of Acetonitrile)



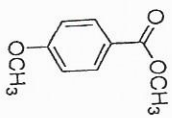
1 IPDA Multi 1 / 230nm 4nm

| PDA Ch1 230nm 4nm |                          | PeakTable |          |        |                         |
|-------------------|--------------------------|-----------|----------|--------|-------------------------|
| Peak#             | Name                     | Ret. Time | Area     | Area % | Relative Retention Time |
| 1                 | RT:2.470                 | 2.470     | 80004    | 0.63   | 0.49                    |
| 2                 | Methyl-4-methoxybenzoate | 5.039     | 12539290 | 99.37  | 1.00                    |
| Total             |                          |           | 12619295 | 100.00 |                         |



INDOFINE Chemical Company, Inc.  
 121 STRYKER LANE  
 BLDG. 30, SUITE 1  
 HILLSBOROUGH, NJ 08844

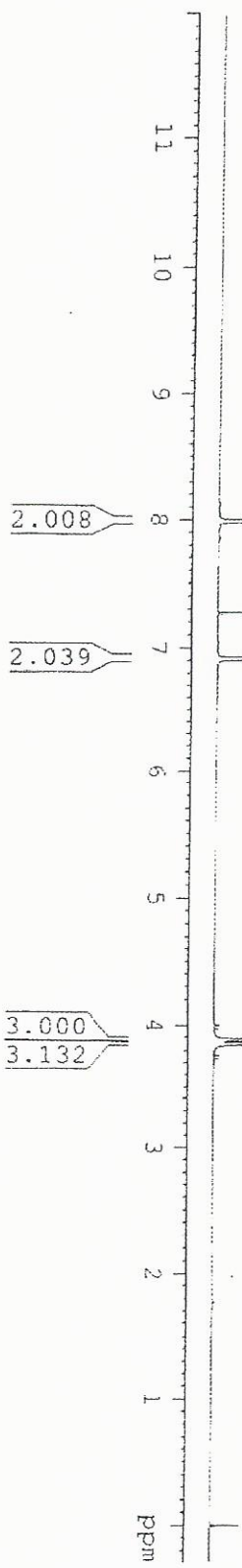
Catalog No.: 01-1157  
 Product Name: Methyl 4-methoxybenzoate  
 Lot No.: 0304061



1H IN CDCL3  
 AVANCE-600

SOLVENT CDCL3  
 NS 10  
 DS 0  
 SMH 11034.575 HZ  
 FIDRES 0.359847 HZ  
 AQ 1.3519598 SEC  
 RG 16  
 EW 45.087 USEC  
 DE 6.00 USEC  
 TE 298.2 K  
 GI 1.50000000 SEC  
 TD0 1

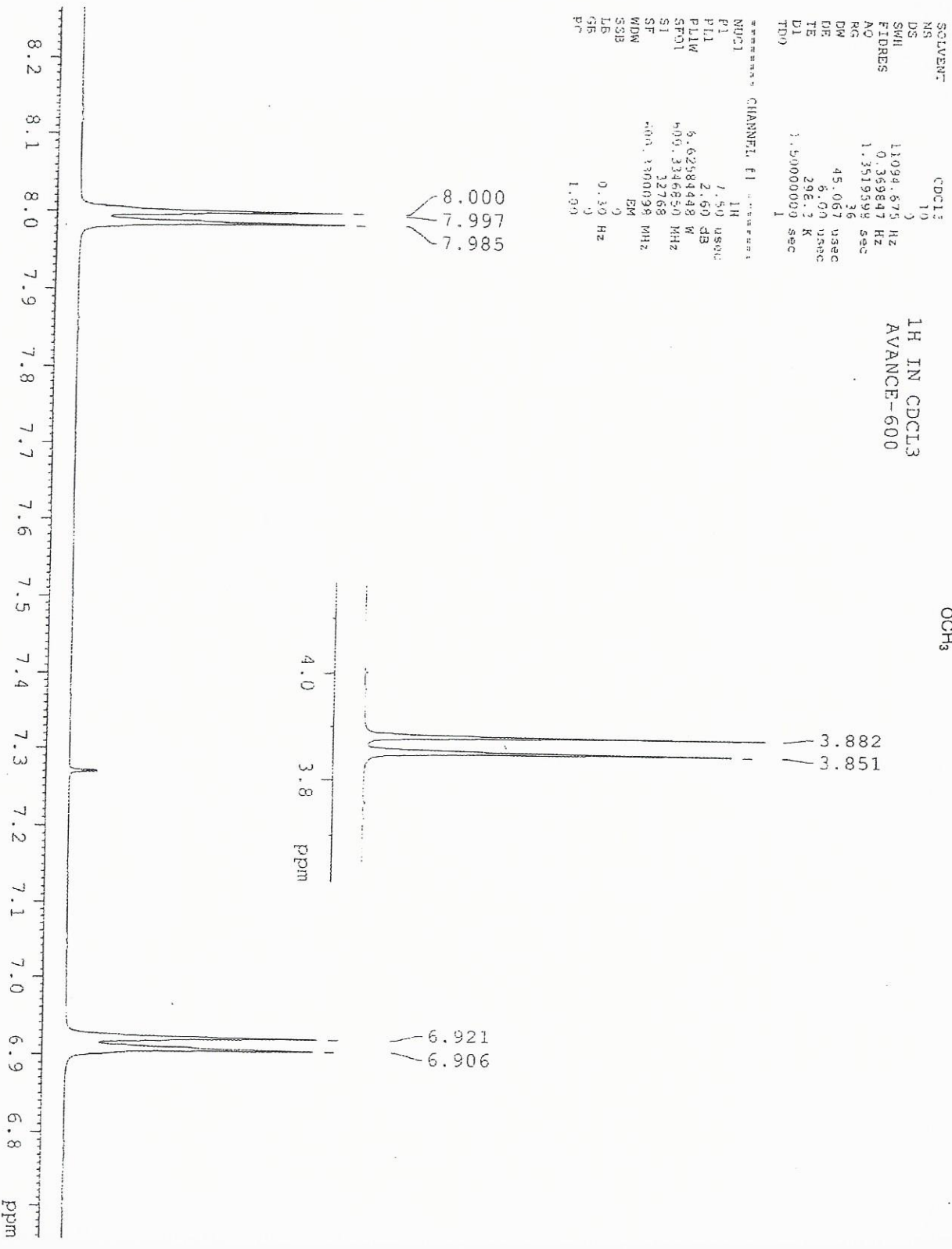
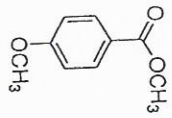
CHANNEL F1  
 NUCL1 1H  
 P1 7.50 USEC  
 PL1 2.50 DB  
 PL1M 6.62584448 W  
 SFO1 600.3346500 MHZ  
 SI 32768  
 SF 600.3300098 MHZ  
 GRM EM  
 SSB 0  
 LB 0.30 HZ  
 GB 0  
 PC 1.00





INDOFINE Chemical Company, Inc.  
121 STRYKER LANE  
BLDG. 30, SUITE 1  
HILLSBOROUGH, NJ 08844

Catalog No.: 01-1157  
Product Name: Methyl 4-methoxybenzoate  
Lot No.: 0304061



\*\*\*\*\* CHANNEL F1 \*\*\*\*\*  
NUC1 1H  
P1 7.50 usec  
PL1 2.50 dB  
PL1W 5.62584448 W  
SFO1 400.3346850 MHz  
S1 32768  
SF 400.3300098 MHz  
WDW EM  
SSB 0  
LB 0  
GB 0  
PC 1.99

SOLVENT CDCl<sub>3</sub>  
NS 10  
DS 3  
SWH 11094.675 HZ  
FIDRES 0.359847 HZ  
AQ 1.3519599 sec  
RG 36  
DM 45.067 usec  
DE 6.00 usec  
TE 296.2 K  
D1 1.50000000 sec  
TD0 1